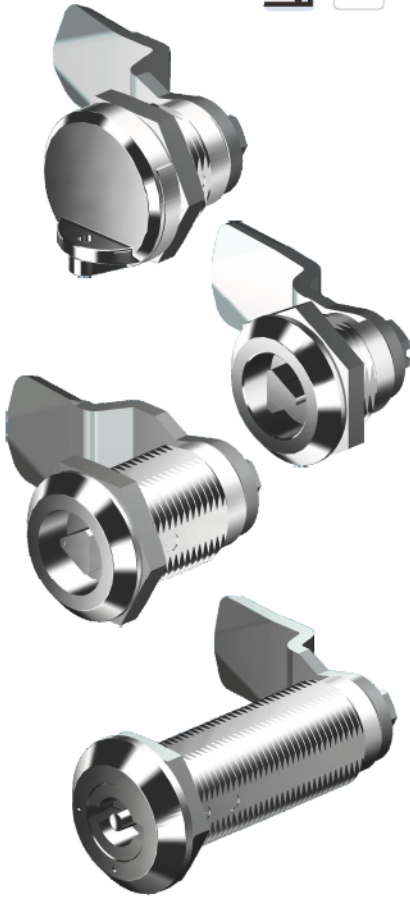


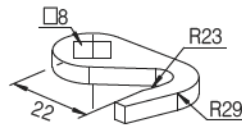
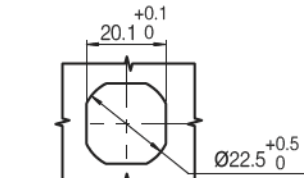
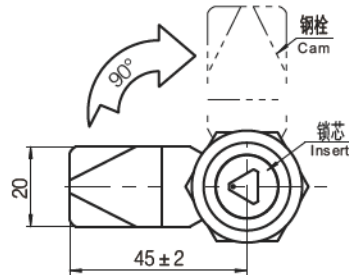
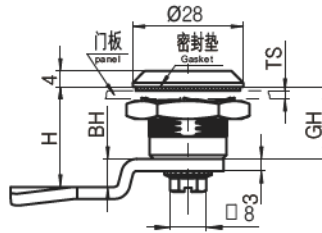
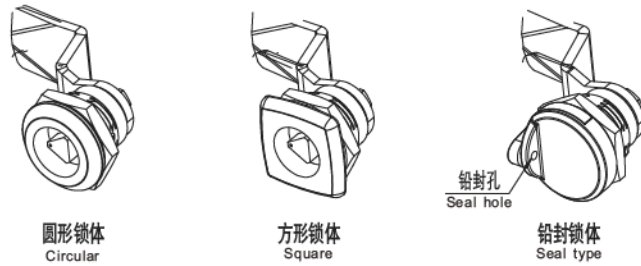
## KA01系列



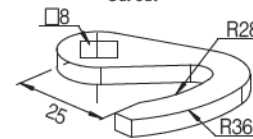
锁具

-材质及表面处理Material and treatment  
 1. 锌合金镀铬锁体 Zinc alloy chrome-plated lock body  
 2. 镀锌钢钢栓 Galvanized steel locking tongue

## 通用工具型转舌锁



724-202300



724-202800

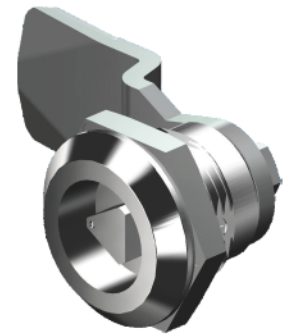
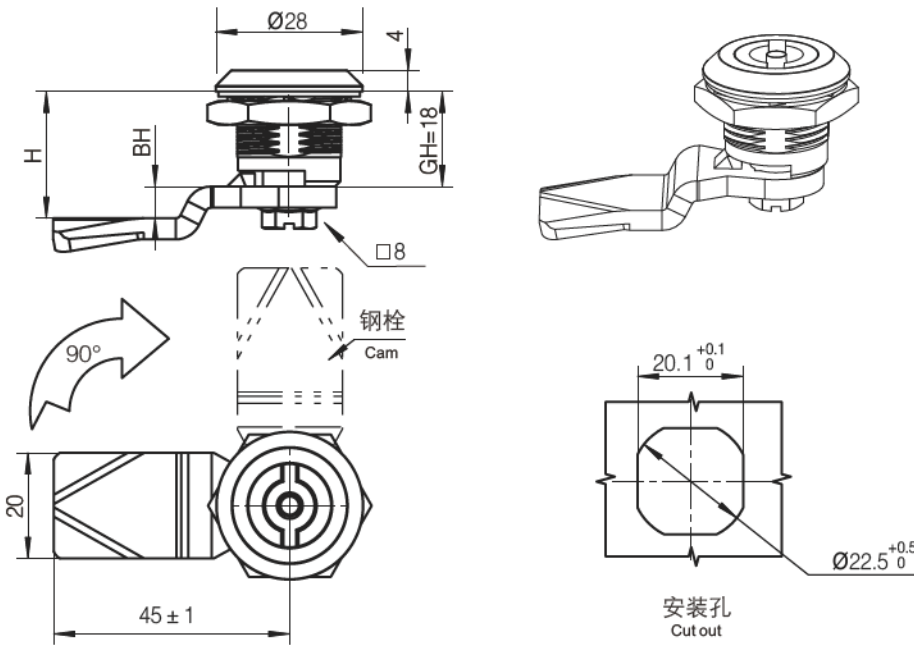
钩型钢栓 (选用)  
 Hooked cam (For selection)

黑色表面处理: 产品代号的尾号改 '1' 即可, 如KA011-1211;  
 Black coated treatment: the last number of product code change '1', such as KA011-1211;  
 默认规格/Default Scale: GH=18, H=25; GH=32, H=32;

特征说明 Features	GH=18 Ts=1~8		GH=32 Ts=1~22		GH=60 Ts=1~50		适配钥匙 Adaptation key
	圆形, 镀铬 Circular, Light chromium	方形, 镀铬 Square, Light chromium	铅封, 喷砂镀铬 Seal type, sand chromium	圆形, 镀铬 Circular, Light chromium	方形, 镀铬 Square, Light chromium	圆形, 镀铬 Circular, Light chromium	
4mm翼型	KA011-1216	KA011-2216	KA013-1216	KA014-1216	KA014-2216	KA015-1216	705-111
□7×7	KA011-1516	KA011-2516	KA013-1516	KA014-1516	KA014-2516	KA015-1516	705-131
□8×8	KA011-1616	KA011-2616	KA013-1616	KA014-1616	KA014-2616	KA015-1616	705-141
□8×8带槽	KA011-1716	KA011-2716	KA013-1716	KA014-1716	KA014-2716	KA015-1716	705-141
三角型7mm	KA011-1816	KA011-2816	KA013-1816	KA014-1816	KA014-2816	KA015-1816	705-151
三角型8mm	KA011-1916	KA011-2916	KA013-1916	KA014-1916	KA014-2916	KA015-1916	705-161
10mm内六角	KA011-1A16	KA011-2A16	KA013-1A16	KA014-1A16	KA014-2A16	KA015-1A16	705-171
一字槽型	KA011-1B16	KA011-2B16	KA013-1B16	KA014-1B16	KA014-2B16	KA015-1B16	
8mm内六角	KA011-1C16	KA011-2C16	KA013-1C16	KA014-1C16	KA014-2C16	KA015-1C16	705-181

外定位工具型转舌锁

KA01系列



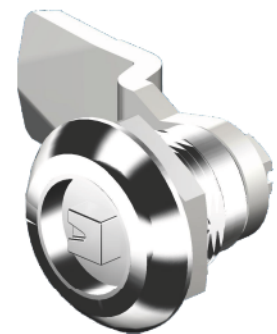
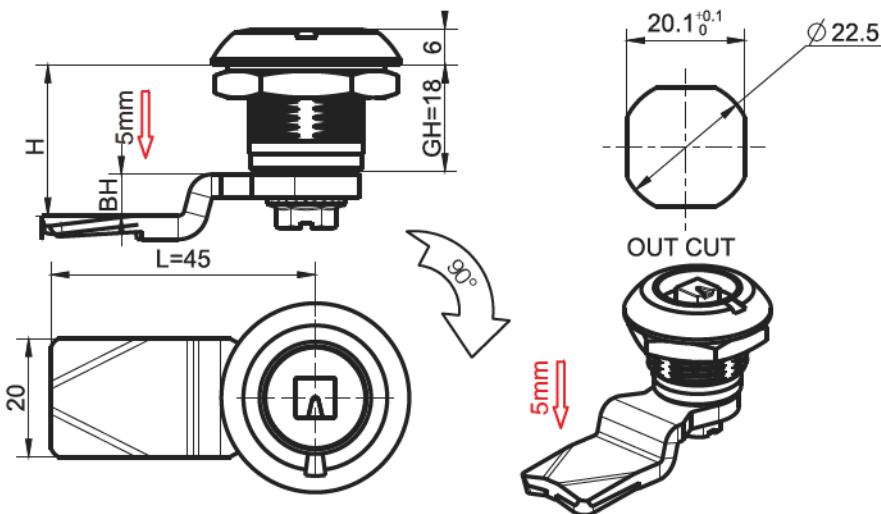
-材质及表面处理Material and treatment:  
1. 锌合金镀铬锁体 Zinc alloy chrome-plated lock body  
2. 镀锌钢钢栓 Galvanized steel locking tongue

锁具

特征说明 Features	锌合金, 镀铬 Zinc alloy, chrome	圆形, 不锈钢 Circular, Stainless steel	PA基座, 锌合金锁芯 PA housing, zinc alloy insert	适配钥匙 Adaptation key
4mm翼型 4mm Double bit	KA012-1216	KA012-1250	KA012-1271	705-111
□7×7 Square 7mm	KA012-1516	KA012-1550	KA012-1571	705-131
□8×8 Square 8mm	KA012-1616	KA012-1650	KA012-1671	705-141
□8X8带槽 8mm Square with slot	KA012-1716	KA012-1750	KA012-1771	705-141
三角型7mm Triangle 7mm	KA012-1816	KA012-1850	KA012-1871	705-151
三角型8mm Triangle 8mm	KA012-1916	KA012-1950	KA012-1971	705-161
10mm内六角型 10mm Inner hexagon	KA012-1A16		KA012-1A71	705-171
一字槽型 Slot	KA012-1B16	KA012-1B50	KA012-1B71	

短款工具型压紧锁

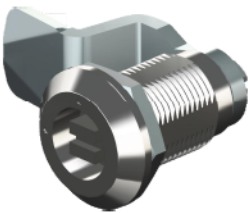
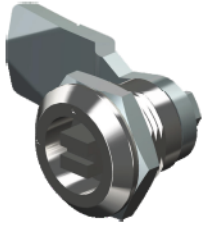
KA025系列



-材质及表面处理Material and treatment:  
1. 锌合金镀铬锁体 Zinc alloy chrome-plated lock body  
2. 镀锌钢钢栓 Galvanized steel locking tongue

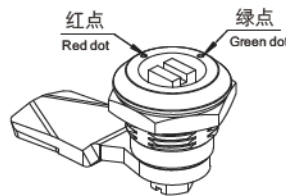
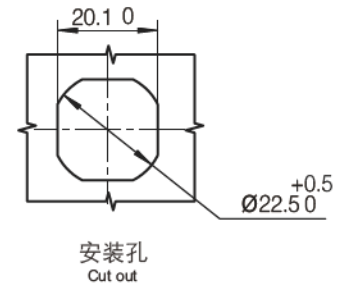
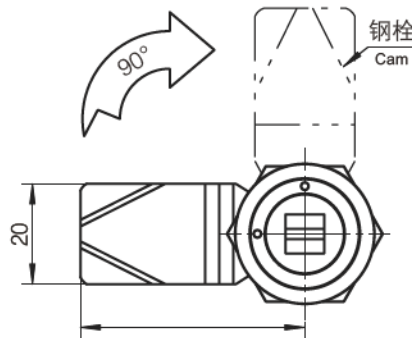
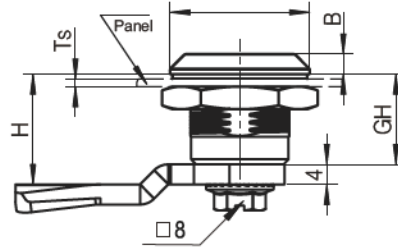
特征说明 Features	逆时针开启 Counterclockwise opening	顺时针开启 Clockwise opening	适配钥匙 Adaptation key
4mm翼型 4mm Double bit	KA025-1211-L	KA025-1211-R	705-111
□7X7 Square 7mm	KA025-1511-L	KA025-1511-R	705-131
三角型8mm Triangle 8mm	KA025-1911-L	KA025-1911-R	705-161

## KA01系列

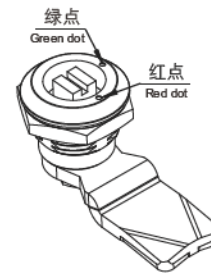


锁具

## 轨道用工具型转舌锁



右开门  
RH



左开门  
LH

**-材质及表面处理Material and treatment**

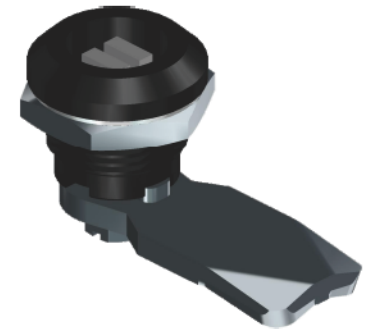
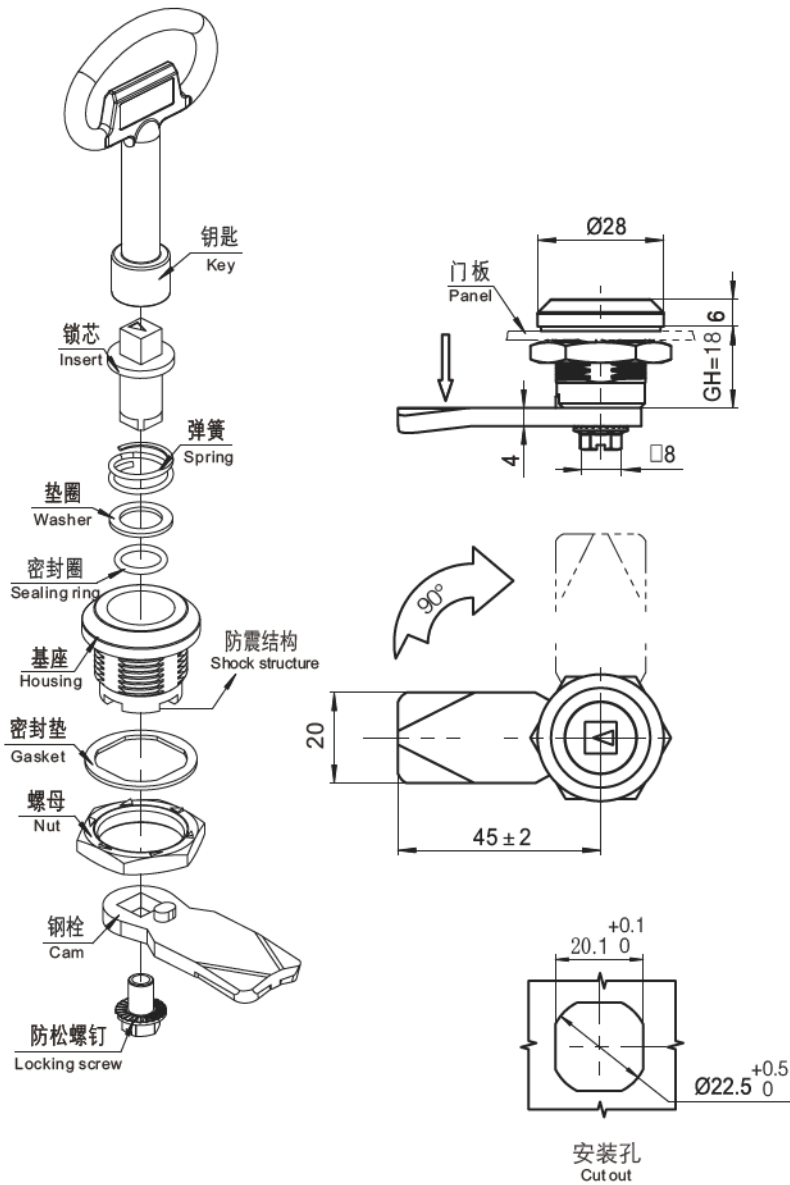
1. 锌合金镀铬锁体 Zinc alloy chrome-plated lock body
2. 镀锌钢钢栓 Galvanized steel locking tongue

默认为右开门，左开门在尾号后加“-L”，如KA011-A216-L；  
GH=18系列，默认H=25；GH=32系列，默认H=32；  
GH=60系列，默认H=60；

特征说明 Features	GH=18,A=28,B=4, Ts=1~8	GH=32,A=32,B=6, Ts=1~22	GH=60,A=32,B=6, Ts=1~50	适配钥匙 Adaptation key
4mm翼型 4mm Double bit	KA011-A216	KA014-A216	KA015-A216	705-111
□7X7 Square 7mm	KA011-A616	KA014-A516	KA015-A516	705-131
□8X8 Square 8mm	KA011-A716	KA014-A616	KA015-A616	705-141
□8X8带槽 8mm Square with slot	KA011-A816	KA014-A716	KA015-A716	705-141
三角型7mm Triangle 7mm	KA011-A916	KA014-A816	KA015-A816	705-151
三角型8mm Triangle 8mm	KA011-AA16	KA014-A916	KA015-A916	705-161

## 防震工具型转舌锁

## KA02系列

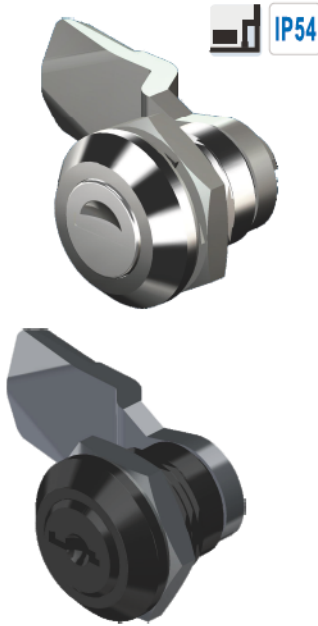


锁具

-材质及表面处理Material and treatment  
1. 锌合金镀铬锁体 Zinc alloy chrome-plated lock body  
2. 镀锌钢钢栓 Galvanized steel locking tongue

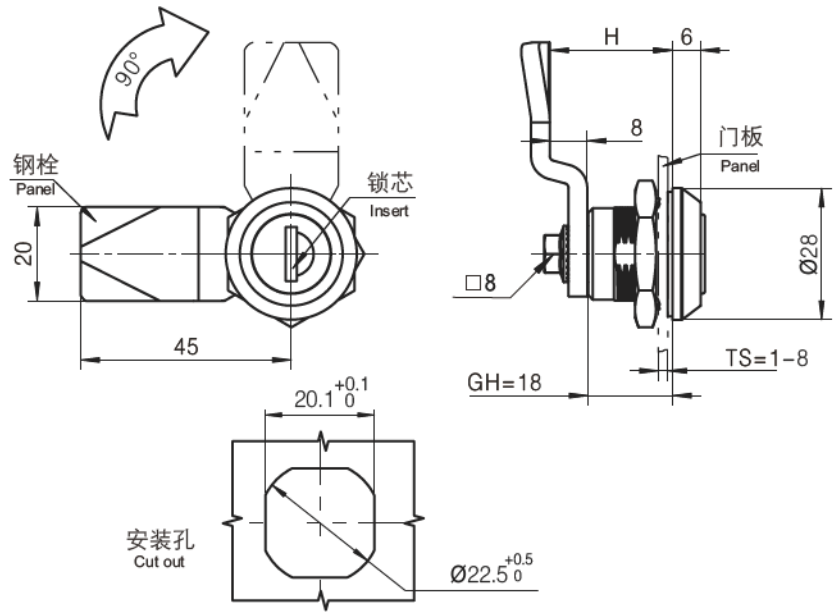
特征说明 Features	锌合金,黑色 Zinc alloy, Black	SUS304不锈钢 SUS304	适配钥匙 Adaptation key
4mm翼型 4mm Double bit	KA021-1211	KA021-1250	705-111
□7X7 Square 7mm	KA021-1511	KA021-1550	705-131
□8X8 Square 8mm	KA021-1611	KA021-1650	705-141
□8X8带槽 8mm Square with slot	KA021-1711	KA021-1750	705-141
三角型7mm Triangle 7mm	KA021-1811	KA021-1850	705-151
三角型8mm Triangle 8mm	KA021-1911	KA021-1950	705-161

## KA04系列



-材质及表面处理Material and treatment:  
1. 锌合金镀铬锁体 Zinc alloy chrome-plated lock body  
2. 镀锌钢钢栓 Galvanized steel locking tongue

## 圆柱锁芯转舌锁



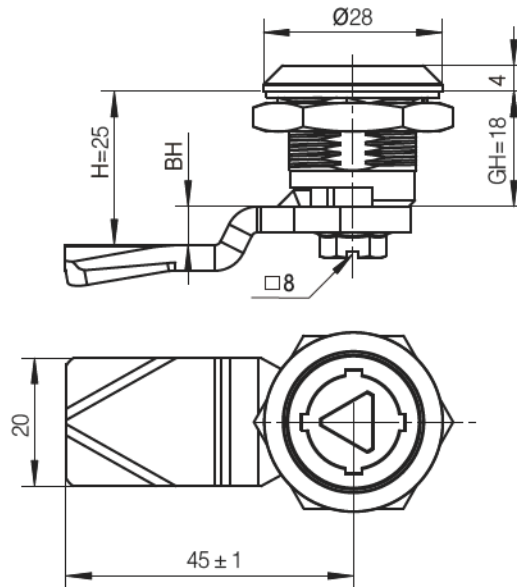
特征说明 Features	锌合金, 黑色 Zinc alloy, black coated	PA, 黑色 PA, black
钥匙只允许锁闭状态拔出	KA041-1116	KA041-1170
钥匙在锁闭及开启状态均可拔出	KA041-2116	KA041-2170

## KA017系列



-材质及表面处理Material and treatment:  
1. 锌合金镀铬锁体 Zinc alloy chrome-plated lock body  
2. 镀锌钢钢栓 Galvanized steel locking tongue

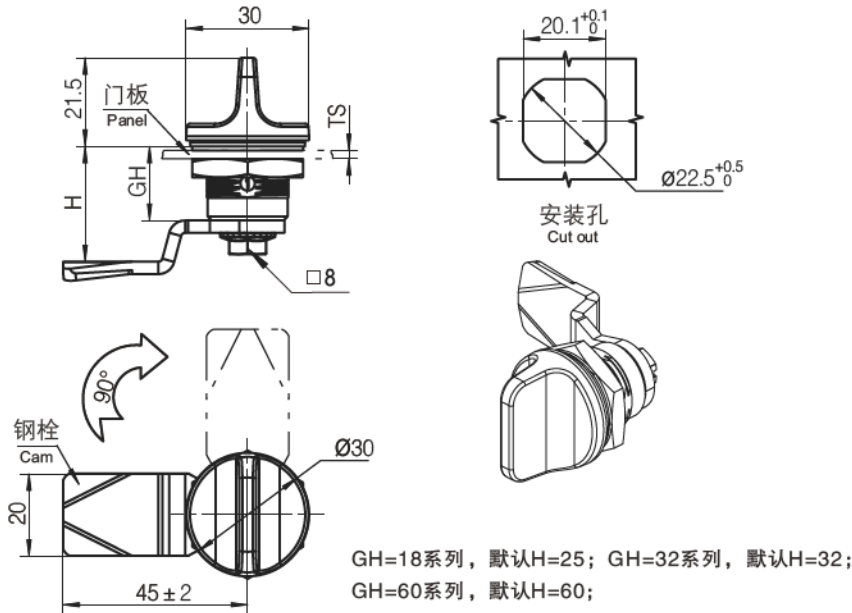
## 防撬工具型转舌锁



特征说明 Features	锌合金, 镀铬 Zinc alloy, chrome	适配钥匙 Adaptation key
翼型(扣拉式) Double bit	KA017-1316	705-111
□7 Square 7mm	KA017-1516	705-141
三角型8mm Triangle 8mm	KA017-1916	705-161

旋钮型转舌锁

KA067系列



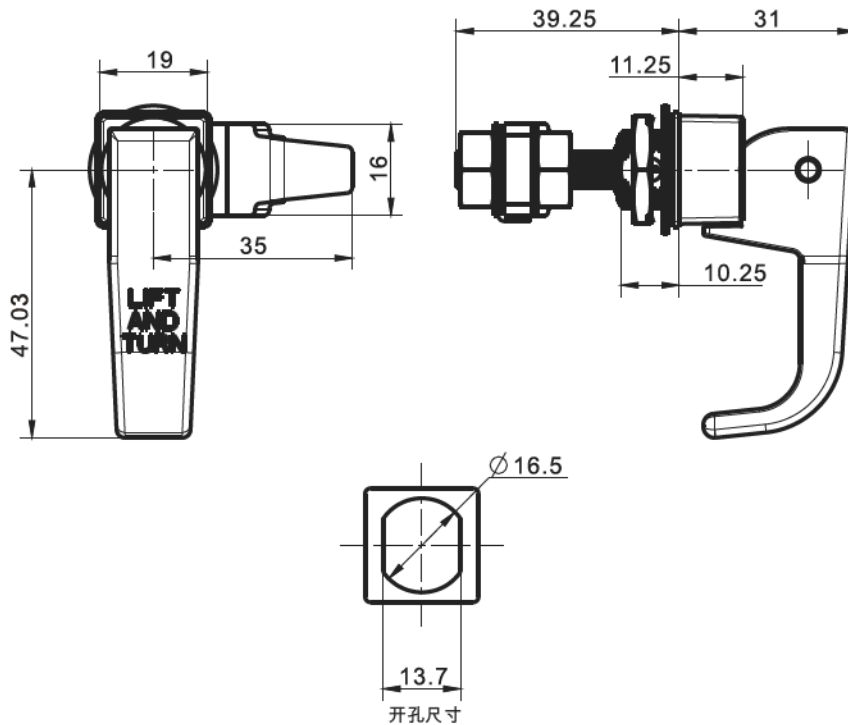
-材质及表面处理Material and treatment:  
1. 锌合金麻黑喷涂底座把手  
Zinc alloy Textured black spraying housing and handle  
2. 镀锌钢钢栓Galvanized steel locking tongue

锁具

GH=18 TS=1-8	GH=32 Ts=1-22	GH=60 Ts=1-50
KA067-1011	KA067-2011	KA067-3011

小型L型把手提拉式压紧锁

KA241系列



-材质及表面处理Material and treatment:  
1. 锌合金黑色喷涂锁体 Zinc alloy black coated lockbody  
2. 镀锌钢钢栓Galvanized steel locking tongue

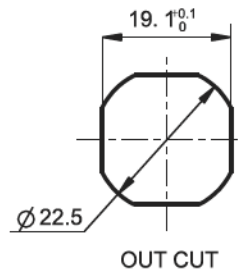
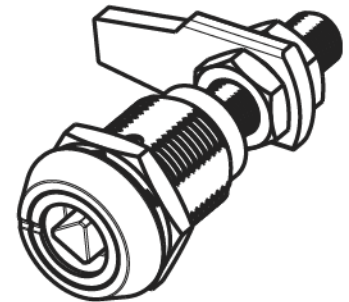
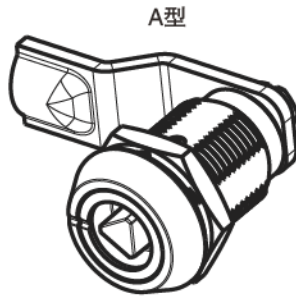
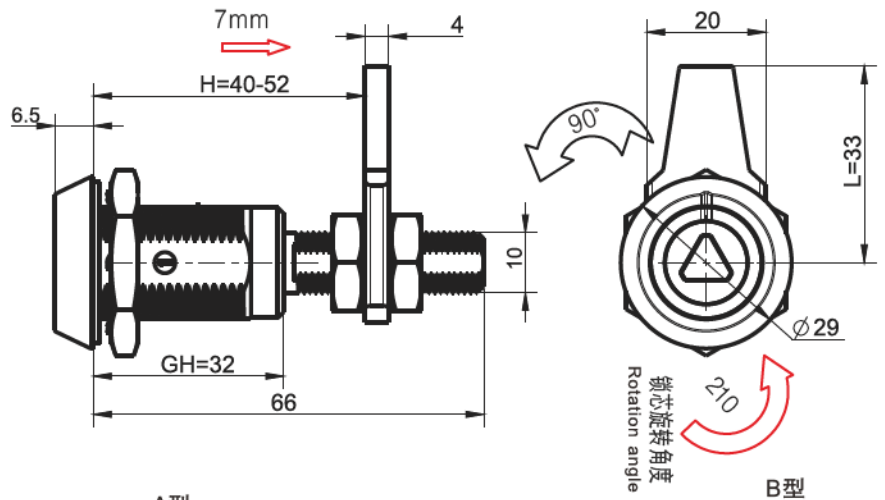
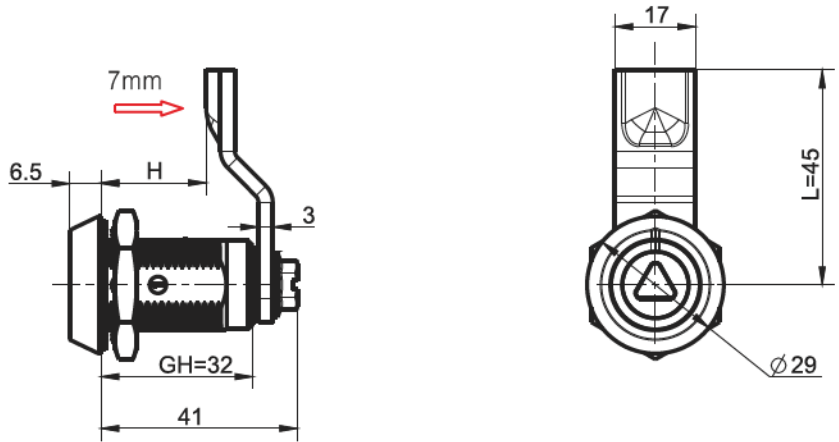
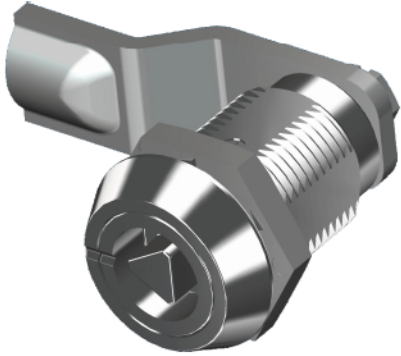
亮光铬 Light chromium	黑色喷涂 Black coating
KA241-1116	KA241-1112

## KA081-KA082系列

## 美标工具型压紧锁



锁具



—材质及表面处理Material and treatment:  
 1. 锌合金镀铬锁体Zinc alloy chrome-plated lock body;  
 2. 镀锌钢锁舌-螺杆Galvanized steel locking tongue and screw rod

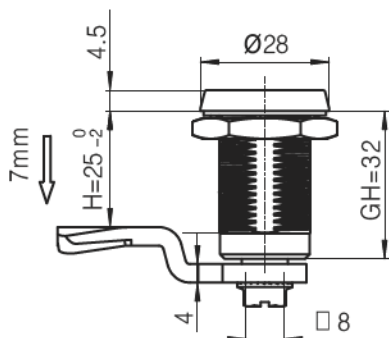
特征说明 Features	A型, 钢栓固定型 Type A	B型, 钢栓调节型 Type B	适配钥匙 Adaptation key
4mm翼型 4mm Double bit	KA081-7216	KA082-7216	705-111
□ 7X7 Square 7mm	KA081-7516	KA082-7516	705-131
□ 8X8 Square 8mm	KA081-7616	KA082-7616	705-141
三角型7mm Triangle 7mm	KA081-7816	KA082-7816	705-151
三角型8mm Triangle 8mm	KA081-7916	KA082-7916	705-161
一字槽型 Slot	KA081-7B16	KA082-7B16	

工具型压紧锁

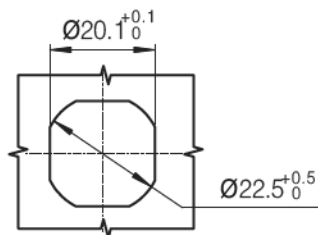
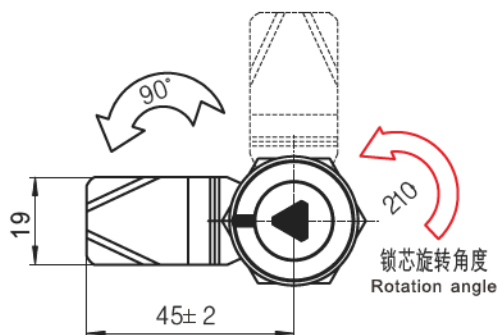
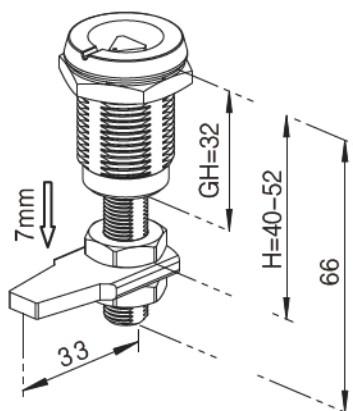
KA081-KA082系列



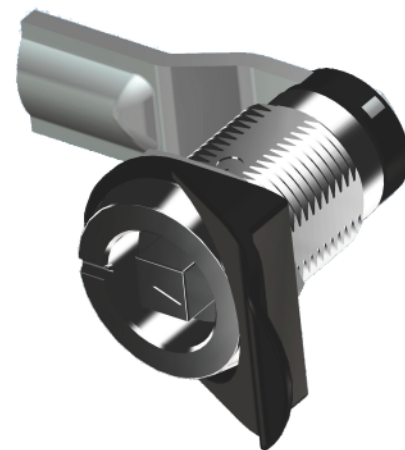
A型, 钢栓固定型  
Cam fixed (type A)



B型, 钢栓调节型  
Cam adjustable (type B)



安装孔  
Cut out



锁具

-材质及表面处理Material and treatment:  
1. 锌合金镀铬锁体Zinc alloy chrome-plated lock body  
2. 镀锌钢钢栓、螺杆Galvanized steel locking tongue and screw rod

特征说明 Features	圆形, 镀铬, A型 Circular, chromed, type A	圆形, 不锈钢, A型 Circular, stain steel, type A	圆形, 镀铬, B型 Circular, chromed, type B	圆形, 不锈钢, B型 Circular, stain steel, type B	适配钥匙 Adaptation key
4mm翼型	KA081-1216	KA081-1250	KA082-1216	KA082-1250	705-111
□7X7	KA081-1516	KA081-1550	KA082-1516	KA082-1550	705-131
□8X8	KA081-1616	KA081-1650	KA082-1616	KA082-1650	705-141
□8X8带槽	KA081-1716	KA081-1750	KA082-1716	KA082-1750	705-141
三角型7mm	KA081-1816		KA082-1816		705-151
三角型8mm	KA081-1916	KA081-1950	KA082-1916	KA082-1950	705-161
一字槽型	KA081-1B16	KA081-1B50	KA082-1B16	KA082-1B50	
8mm内六角	KA081-1C16		KA082-1C16		



KA083-3/4系列



锁具

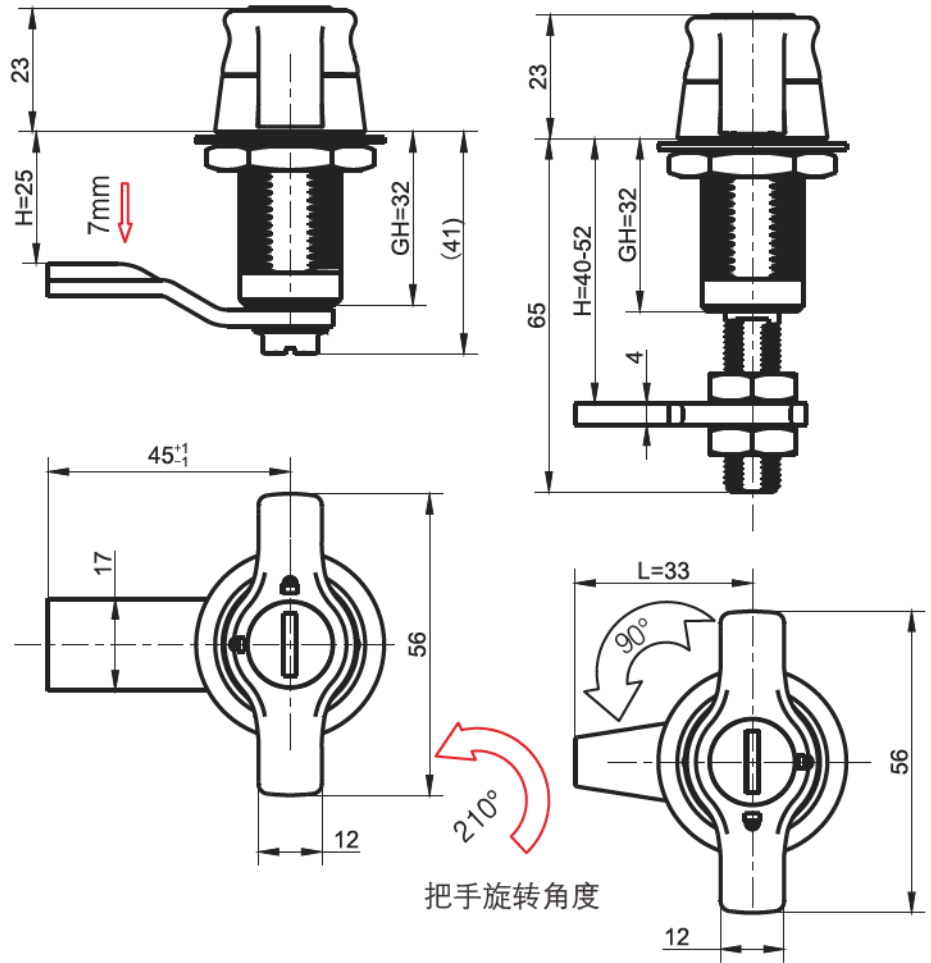


材质及表面处理 Material and treatment:  
 1. 锌合金麻黑喷涂底座把手  
 Zinc alloy Textured black spraying housing and handle  
 2. 镀锌钢螺杆螺母. 钢柱  
 Galvanized steel screw rod, cam and nut

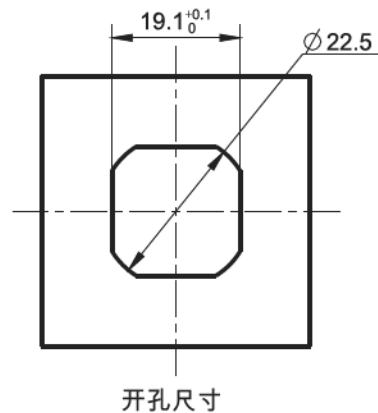
圆柱锁芯翼型把手压紧锁

钢栓固定型  
Cam fixed type

钢栓调节型  
Cam adjustable



把手旋转角度

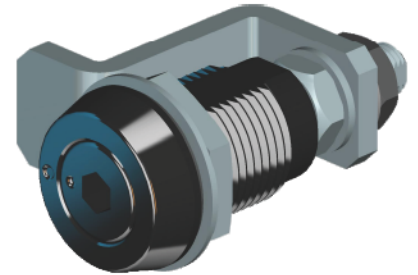
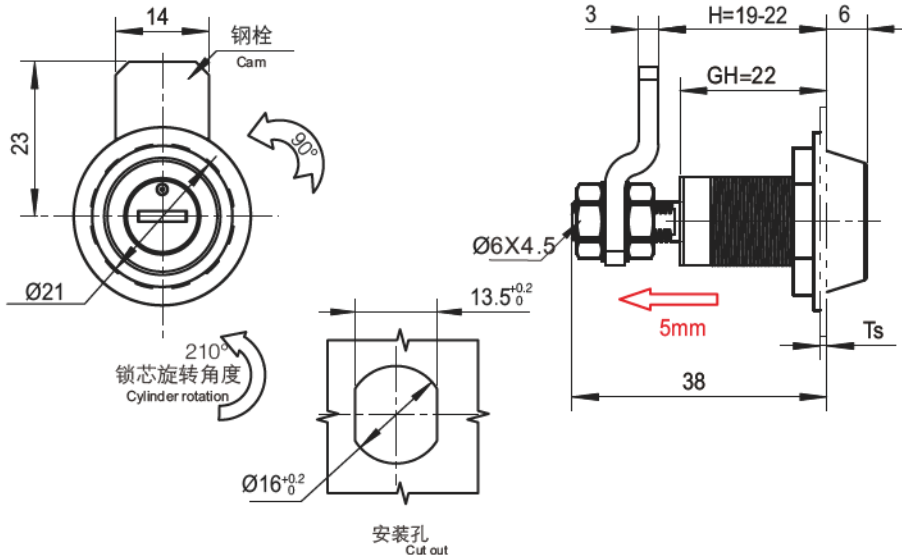


开孔尺寸

钢栓固定型 Cam fixed type	钢栓调节型 Cam adjustable
KA083-3112	KA083-4112

小款工具型压紧锁

KA089-1系列



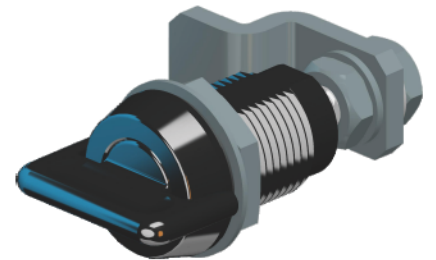
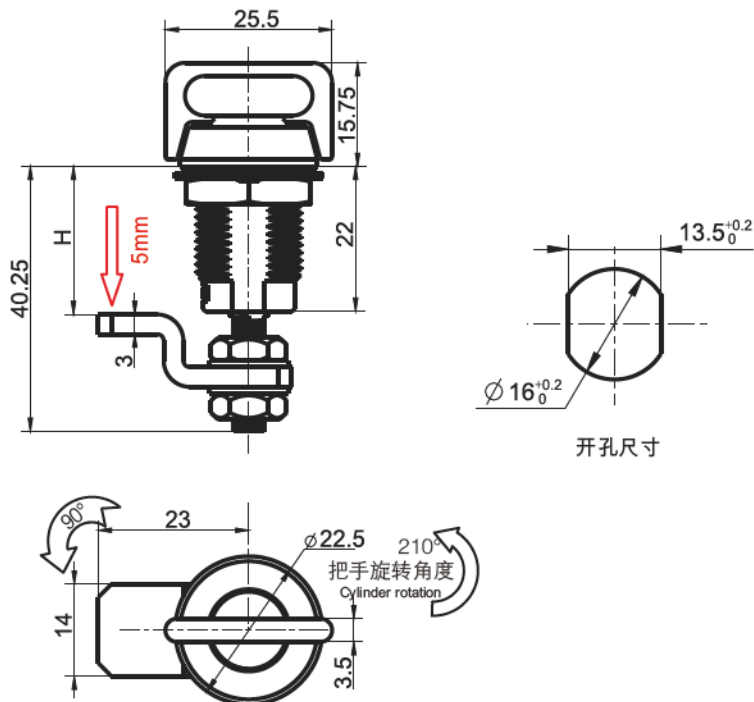
锁具

-材质及表面处理Material and treatment:  
 1. 锌合金麻黑喷涂底座锁芯  
 Zinc alloy Textured black spraying housing and insert  
 2. 镀锌钢螺杆、钢柱Galvanized steel locking tongue and screw rod

特征说明 Features	锌合金,黑色 Zinc alloy, black	不锈钢 Stainless steel
□6×6 Square 6mm	KA089-1211	KA089-1250
一字槽型 Slot	KA089-1411	KA089-1450
内六角4mm 4mm Inner hexagon	KA089-1511	
内六角6mm 6mm Inner hexagon	KA089-1611	
9mm圆头 9 mm round head	KA089-1711	KA089-1750

小款旋钮型压紧锁

KA089-2系列



-材质及表面处理Material and treatment:  
 1. 锌合金麻黑喷涂锁体  
 Zinc alloy Textured black coated lock body  
 2. 镀锌钢螺杆、钢柱Galvanized steel locking tongue and screw rod

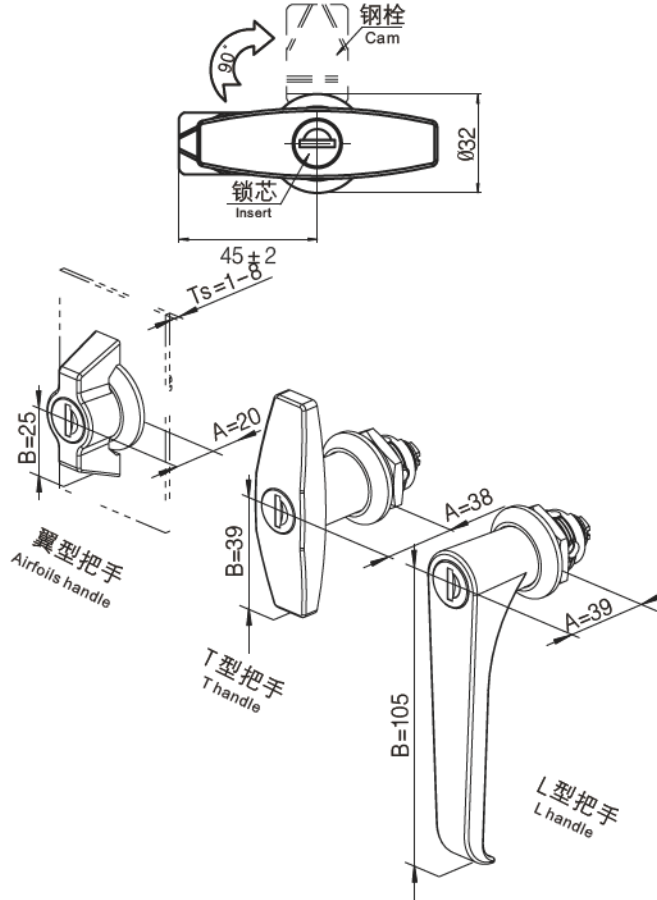
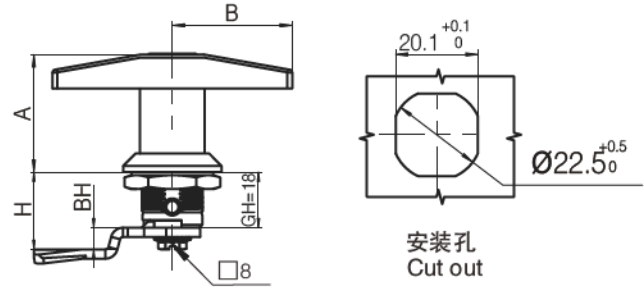
产型号品 Product code
KA089-2011

## KA09系列



锁具

## 把手型转舌锁



-材质及表面处理Material and treatment:  
1. 锌合金麻黑喷涂锁体 Zinc alloy Textured black coated lockbody  
2. 镀锌钢钢栓Galvanized steel locking tongue

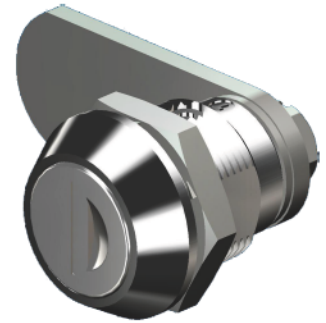
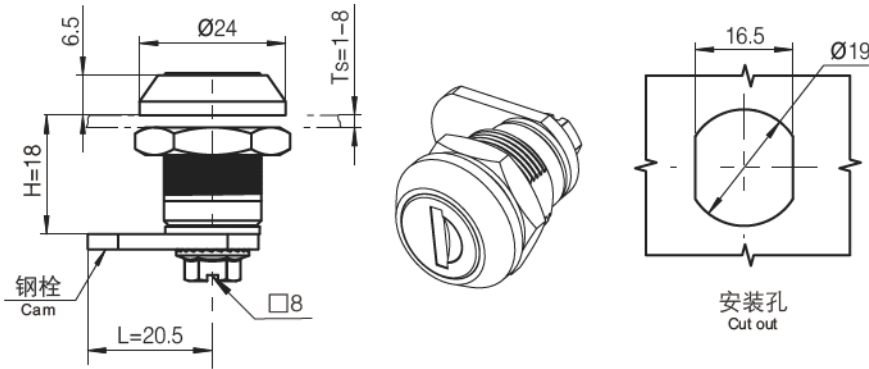
特征说明Features	翼型把手 Airfoils handle				T型把手 T handle			
	GH=18		GH=32		GH=18		GH=32	
	黑色, 锌合金	SUS304	黑色, 锌合金	SUS304	黑色, 锌合金	SUS304	黑色, 锌合金	SUS304
无锁芯 Without insert	KA091-1011	KA091-1050	KA091-2011	KA091-2050	KA092-1011	KA092-1050	KA092-2011	KA092-2050
通配锁芯 Standard insert	KA091-1111	KA091-1150	KA091-2111	KA091-2150	KA092-1111	KA092-1150	KA092-2111	KA092-2150

特征说明Features	L型把手,普通型 L handle, standar				L型把手,挂锁型 L handle, padlock Padlock type			
	GH=18		GH=32		黑色, 锌合金, GH=18		黑色, 锌合金, GH=32	
	黑色, 锌合金	SUS304	黑色, 锌合金	SUS304	右开门	左开门	右开门	左开门
无锁芯 Without insert	KA093-1011	KA093-1050	KA093-2011	KA093-2050	KA094-1011-R	KA094-1011-L	KA094-2011-R	KA094-2011-L
通配锁芯 Standard insert	KA093-1111	KA093-1150	KA093-2111	KA093-2150	KA094-1111-R	KA094-1111-L	KA094-2111-R	KA094-2111-L

圆柱锁芯转舌锁

KA204系列



锁具

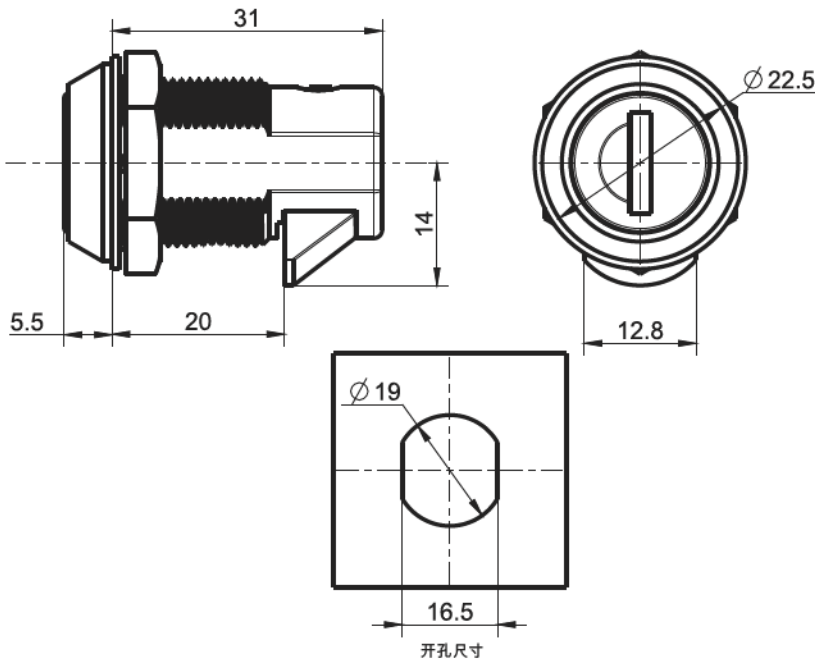
黑色表面处理: 产品代号的尾号改 '1' 即可, 如KA204-1111;  
 Black coated treatment: the last number of product code change '1', such as KA204-1211;  
 默认规格/ Default Scale: H=18;

-材质及表面处理Material and treatment:  
 1. 锌合金镀铬锁体 Zinc alloy chrome-plated lock body  
 2. 镀锌钢钢栓 Galvanized steel locking tongue

特征说明 Features	锌合金, 镀铬 Zinc alloy, chromed
通配锁芯 Standard insert	KA204-1216

钥匙开启式舌头锁

KA211系列



-材质及表面处理Material and treatment:  
 1. 锌合金镀铬锁体 Zinc alloy chrome-plated lock body

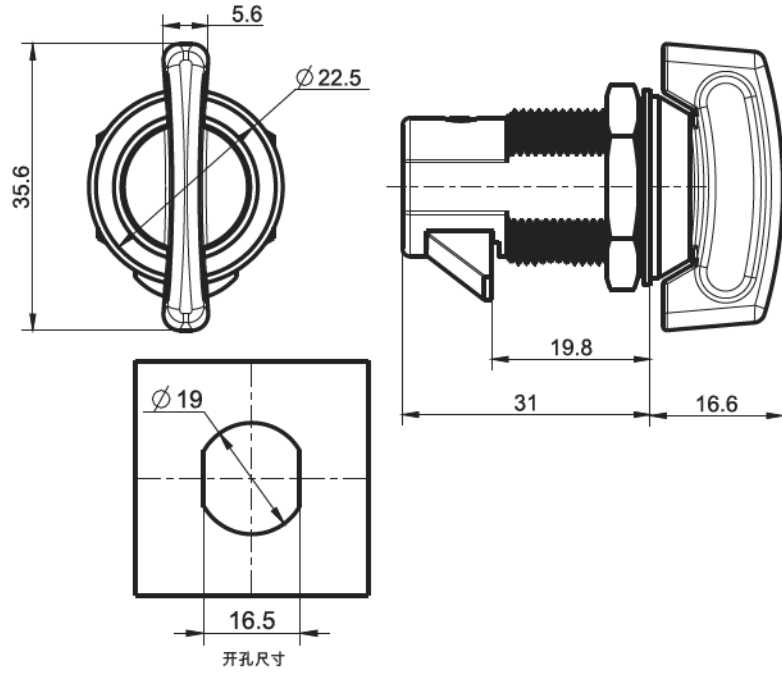
标准锁芯 Standard	平面弹子锁芯 Plane bullet core type	圆头侧槽锁芯 Round head side groove type
KA211-1116	KA211-3116	KA211-1T16

KA212-1系列



材质及表面处理Material and treatment:  
1. 锌合金镀铬锁体 Zinc alloy chrome-plated lock body

T型小把手舌头锁



亮光铬, 锌合金  
Light chromium, zinc alloy

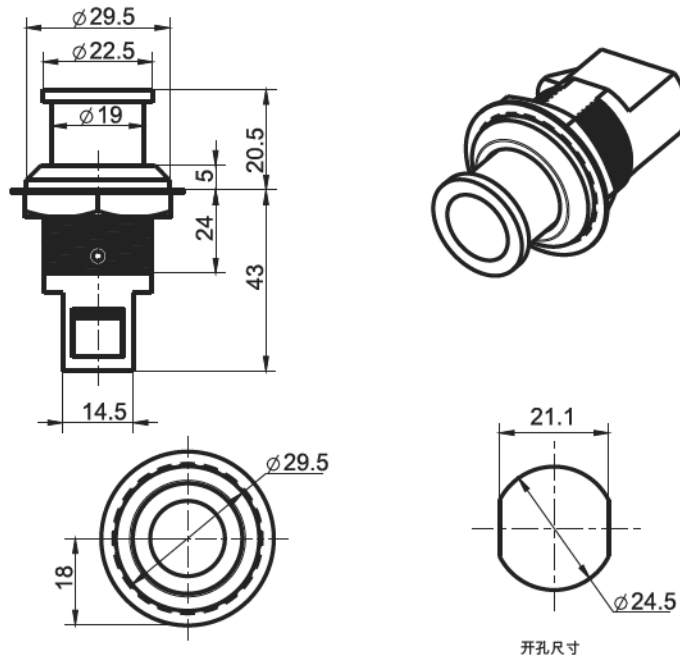
KA212-1016

KA214-1系列



材质及表面处理Material and treatment:  
1. 锌合金镀铬锁体 Zinc alloy chrome-plated lock body  
2. 不锈钢304本色锁体 Stainless steel grey lock body

按压式舌头锁



特征说明  
Features

无锁芯  
There is no lock  
有锁芯  
Have a lock

亮光铬, 锌合金  
Light chromium, zinc alloy

KA214-1016

KA214-2016

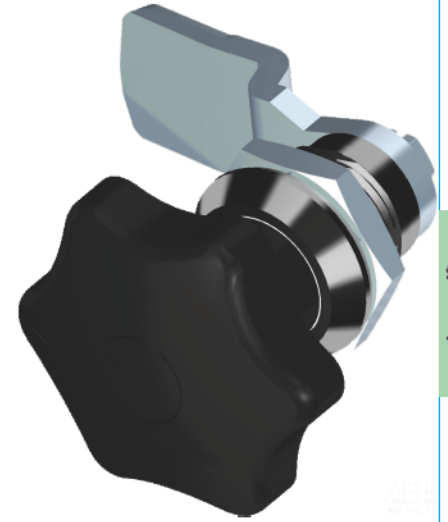
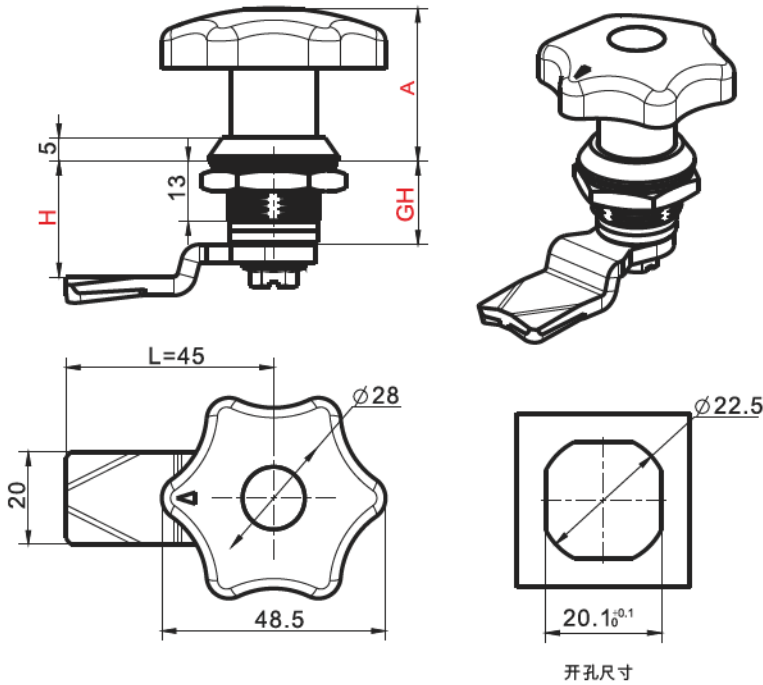
不锈钢本色  
Stainless steel color

KA214-1026

KA214-2026

法兰旋钮转舌锁

KA306-1/2系列



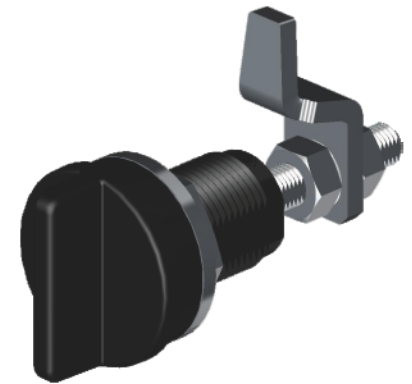
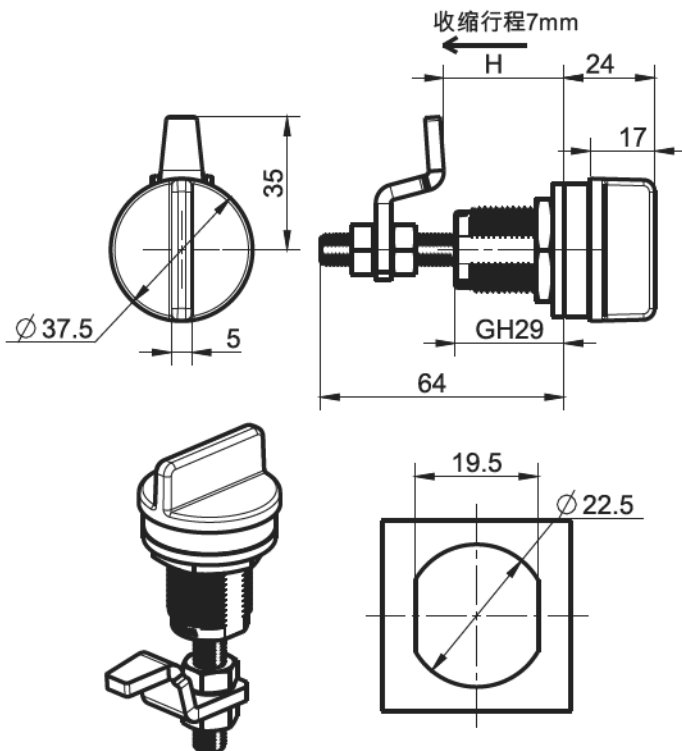
锁具

-材质及表面处理Material and treatment:  
 1. 锌合金麻黑喷涂基座Zinc alloy Textured black spraying housing  
 2. 黑色PA把手Black PA handle  
 3. 镀锌钢螺栓Galvanized steel locking tongue

特征说明Features	GH=18	GH=32
高把手A=33High handle	KA306-1111	KA306-1211
矮把手A=19short handle	KA306-2111	KA306-2211

旋钮型可调式压紧锁

KA391系列



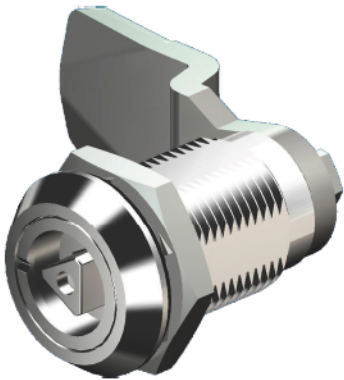
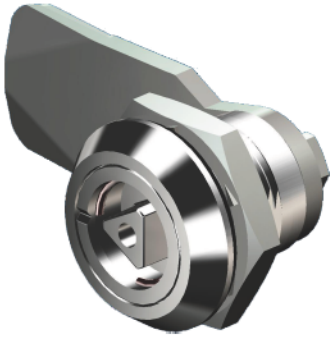
-材质及表面处理Material and treatment:  
 1. 锌合金麻黑喷涂基座Zinc alloy Textured black spraying housing  
 2. 黑色PA把手Black PA handle  
 3. 镀锌钢螺杆、钢柱Galvanized steel screw bar and locking tongue

规格型号specifications
KA391-1012

KA311-1系列

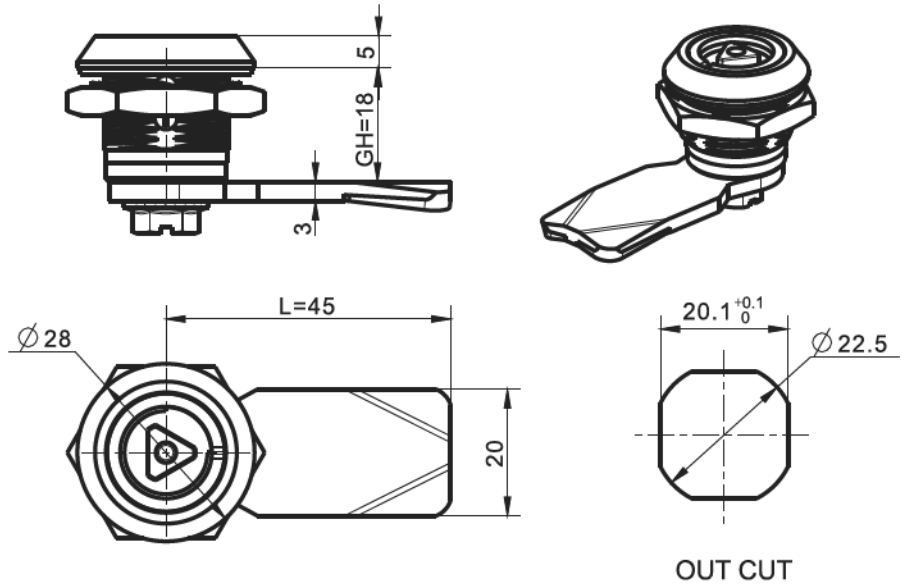


锁具



-材质及表面处理Material and treatment:  
1. 锌合金镀铬锁体 Zinc alloy chrome-plated lock body  
2. 镀锌钢锁栓 Galvanized steel locking tongue

防撬工具型转舌锁



1.特点:

用普通工具如尖嘴钳，螺丝刀，普通工具型钥匙等常见工具去旋转锁芯，锁芯只能360度旋转而无法带动锁舌转动；需插入专用的工具型钥匙，向内按压并旋转钥匙才能带动锁舌转动开启；

2.比较：

普通工具型锁的缺点：1.用普通工具即可打开锁具，不防盗；

普通叶片弹子锁的缺点：

1.钥匙旋转扭力小，无法用于有压紧要求的柜门；

2.锁芯容易被破坏，锁芯容易生锈或杂物堵死导致打不开的情况；

3.钥匙有不通开的概率；

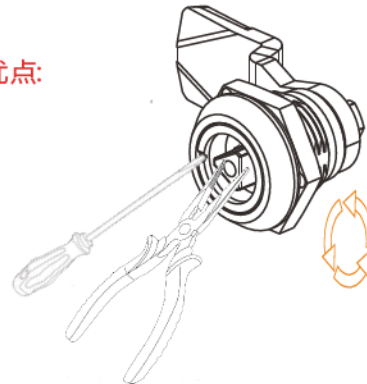
3.安全式工具锁的优点:

1.具较高的防盗性；

2.旋转扭力大；

3.牢固耐用；

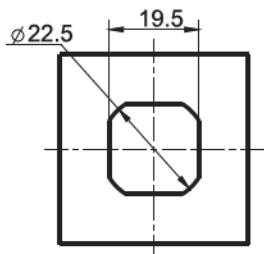
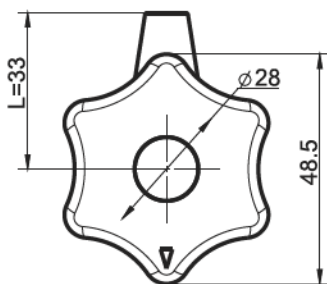
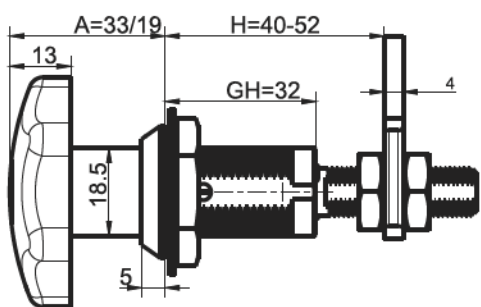
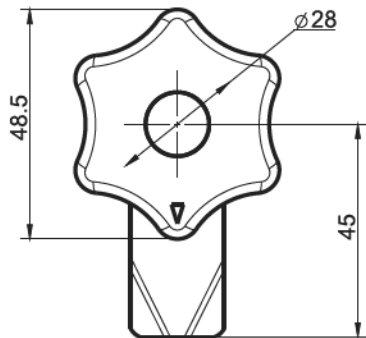
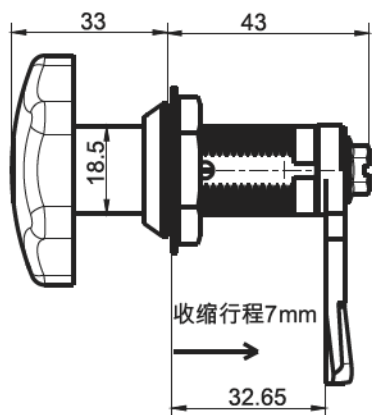
4.钥匙100%通开；



特征说明 Features	GH=18	GH=32	适配钥匙 Adaptation key
□8mm square 8mm	KA311-1616	KA311-2616	705-142
△8mm Triangle 8mm	KA311-1916	KA311-2916	705-162

法兰旋转式压紧锁

KA351系列



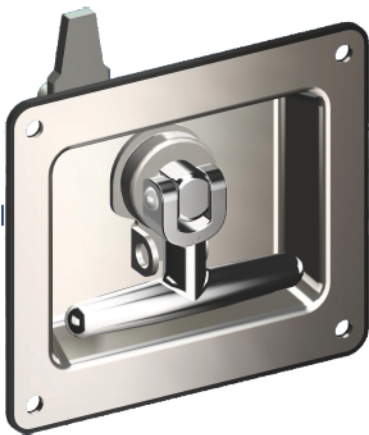
锁具

-材质及表面处理Material and treatment:  
 1. 锌合金麻黑喷涂底座Zinc alloy Textured black spraying housing  
 2. 黑色PA把手Black PA handle  
 3. 镀锌钢钢柱Galvanized steel locking tongue

特征说明 Features	钢栓固定型 Cam fixed type	钢栓调节型 Cam adjustable type
高把手High handle	KA351-1011	KA351-2011
矮把手short handle	KA351-1111	KA351-2111

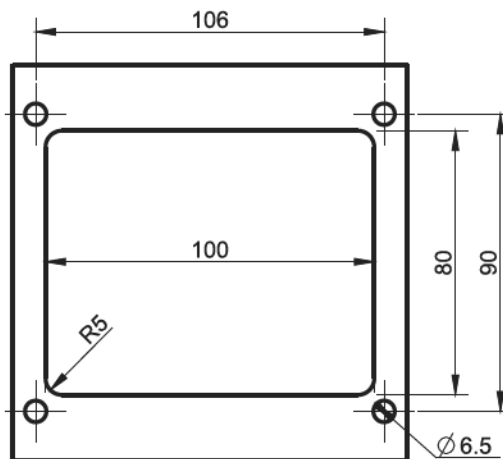
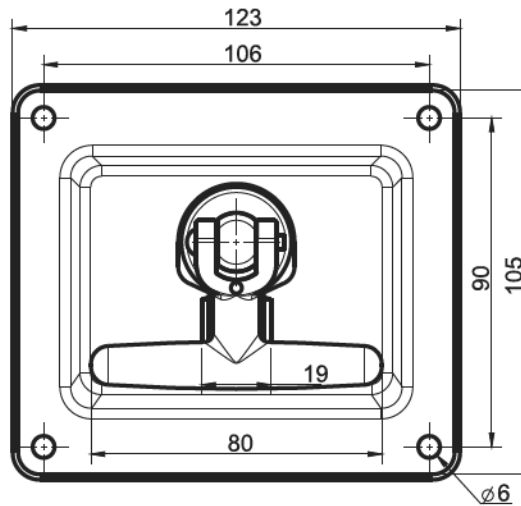
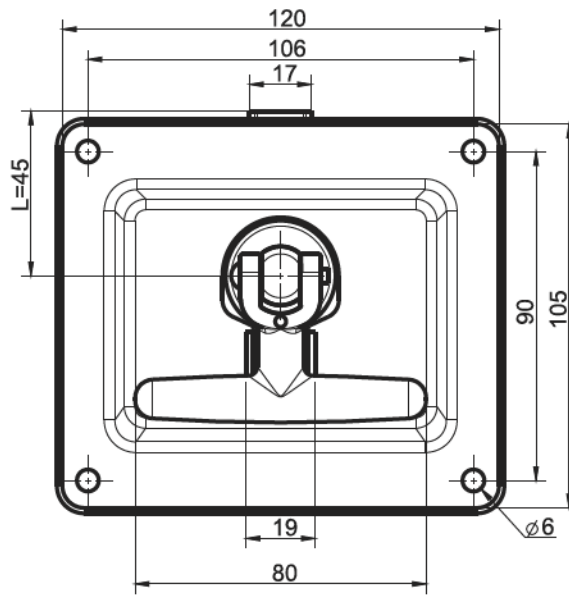


KA342系列



锁具

折叠T把手面板式压紧锁



-材质及表面处理Material and treatment:  
 1. 锌合金镀铬把手Zinc alloy chrome-plated handle;  
 2. 镀锌钢螺杆、钢栓Galvanized steel screw bar and locking tongue  
 3. 不锈钢面板压紧销子stainless steel panel clamping cap and pin

钢栓固定型  
Cam fixed type

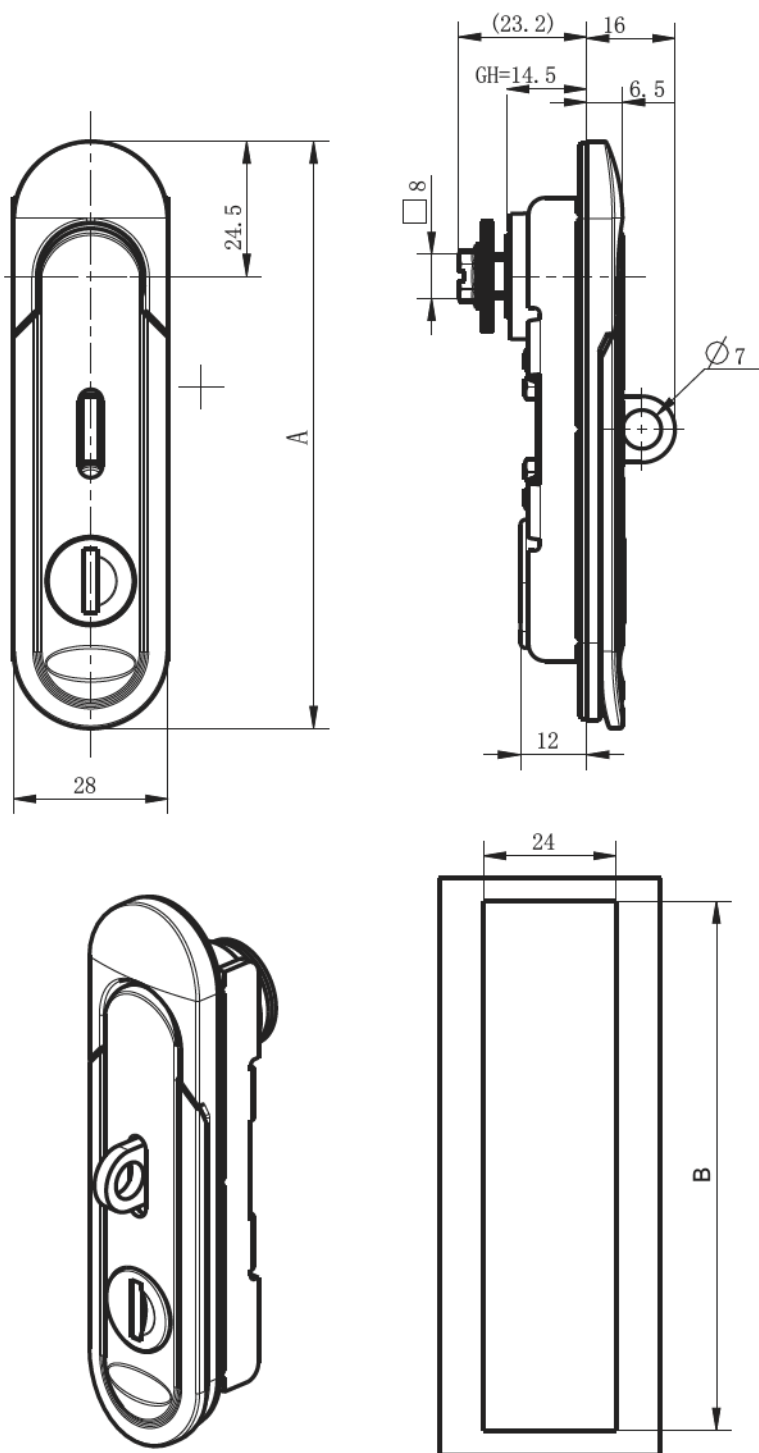
KA342-1150

钢栓调节型  
Cam adjustable type

KA342-2150

## 提拉式摇把锁

## KA09系列



-材质及表面处理Material and treatment:  
1.镀锌钢锁舌、压板Galvanized steel locking tongue, clamp;  
2.锌合金银灰喷漆锁体 zinc alloy Silver grey paint lock body

锁具

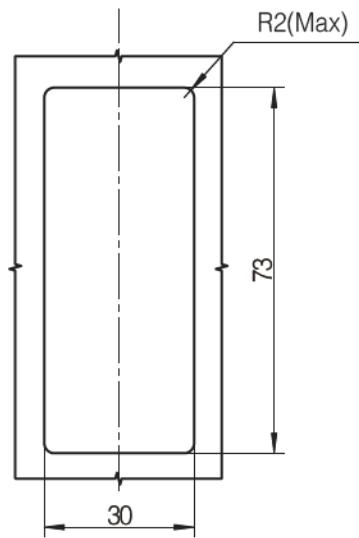
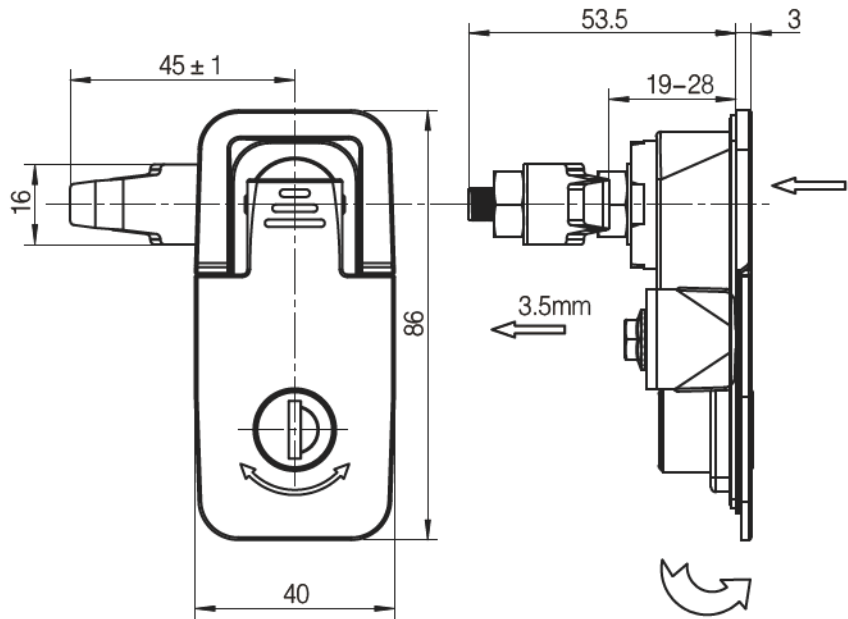
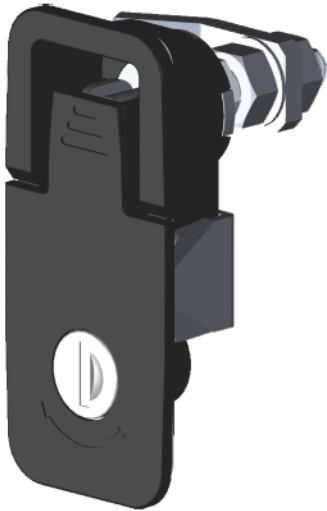
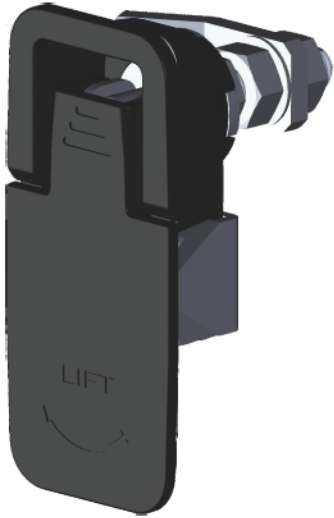
特征说明 Features	短款Short type, A=89, B=63		中款 Middle type, A=107, B=80		长款Long type, A=123, B=96	
	标准型 Standard	挂锁型 padlock type	标准型 Standard	挂锁型 padlock type	标准型 Standard	挂锁型 padlock type
锌合金锁体无锁芯 Zinc body Without insert	KA091-1013	KA091-2013	KA092-1013	KA092-2013	KA093-1013	KA093-2013
锌合金锁体带锁芯 Zinc body With insert	KA091-1113	/	KA092-1113	KA092-2013	KA093-1113	KA093-2013
不锈钢锁体无锁芯 stainless steel body Without insert	/	/	/	/	KA093-1050	/

KA101系列

按压式360° 旋转压紧锁



锁具



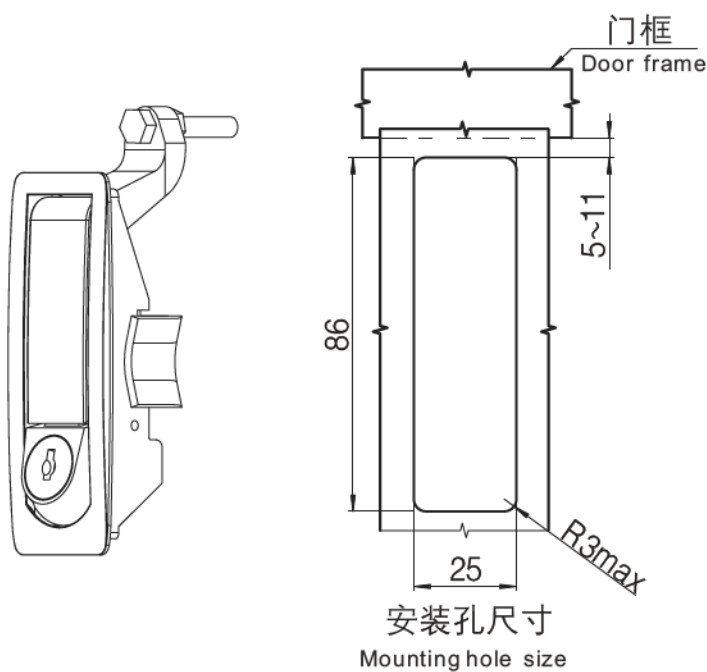
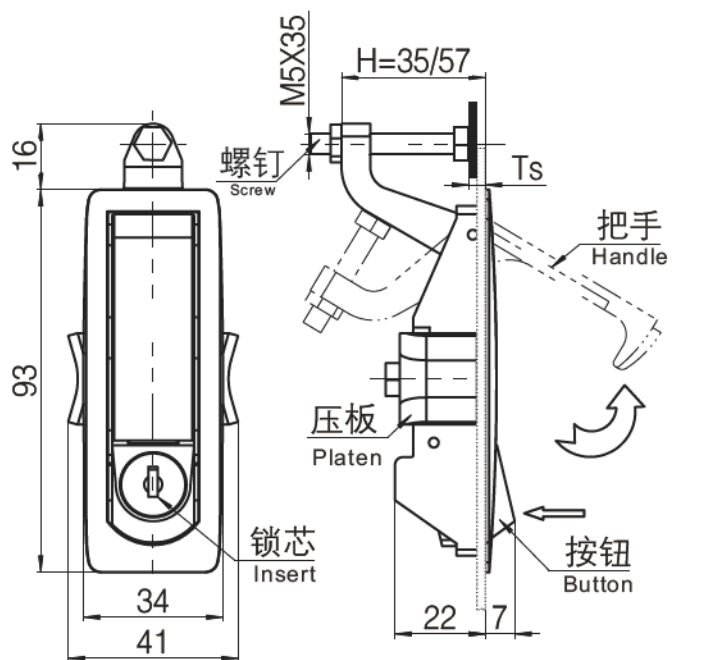
安装孔  
Mounting hole

-材质及表面处理Material and treatment:  
1.镀锌钢栓、压板Galvanized steel locking tongue, clamp;  
2.锌合金黑色喷涂锁体 zinc alloy black coated lock body

带锁芯 With Insert	无锁芯 Without Insert
KA101-1111	KA101-1011

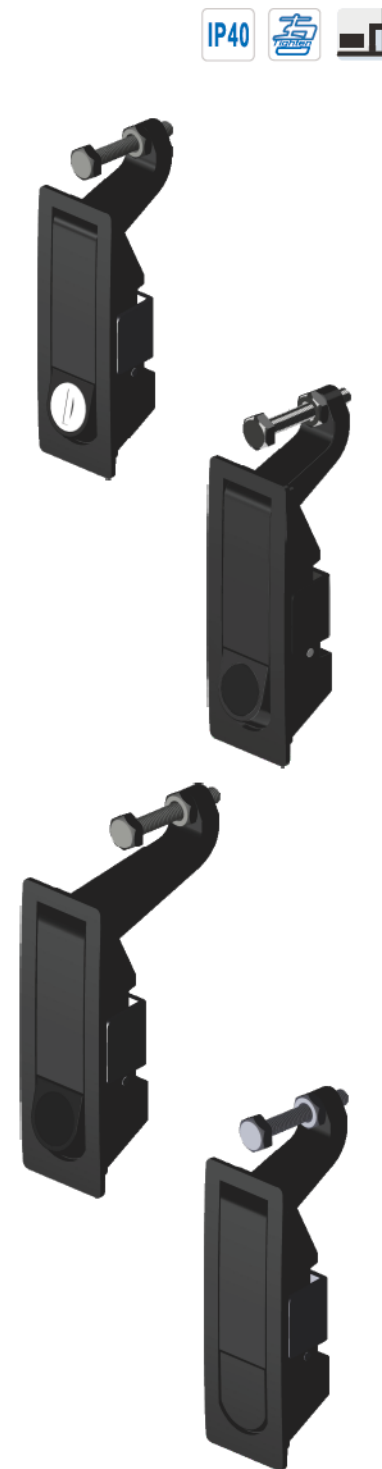
## 杠杆式压紧锁

## KA301系列



亮光铬表面处理：产品代号的尾号改‘6’即可，如KA301-1116；

Light chromium treatment: the last number of product code change '6', such as KA301-1116;



-材质及表面处理Material and treatment:  
1.镀锌钢压板Galvanized steel clamp;  
2.锌合金黑色锁体Zinc alloy black coated lock body

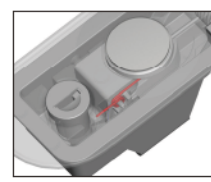
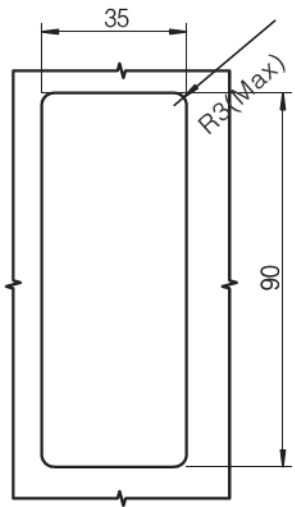
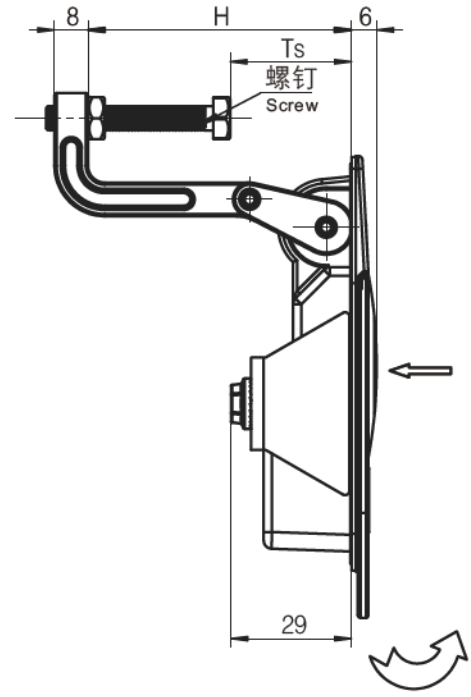
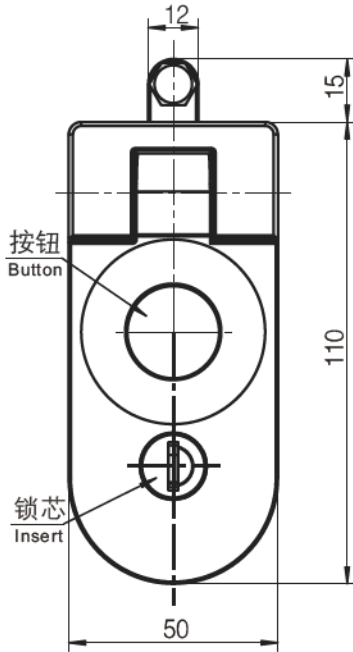
特征说明 Features	黑色，带锁芯 Black, with insert	黑色，无锁芯 Black, without insert	黑色，无锁芯 Black, without insert	尺寸Ts Size TS
H=35	KA301-1111	KA301-1011	KA301-1011	1~24
H=57	KA301-2111	KA301-2011	KA301-2011	23~46

KA303系列

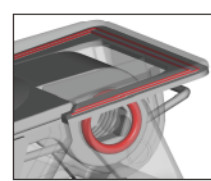
防水型杠杆式压紧锁



锁具



防松设计 Prevent loosening design



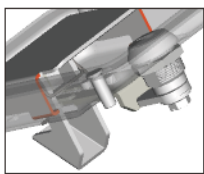
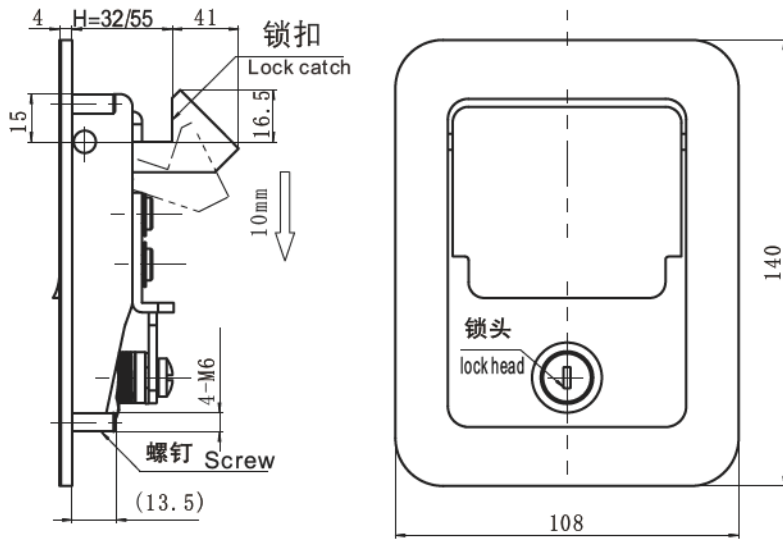
防水设计 water-proof design

-材质及表面处理Material and treatment:  
1. 镀锌钢压板Galvanized steel clamp;  
2. 锌合金黑色锁体Zinc alloy black coated lock bod

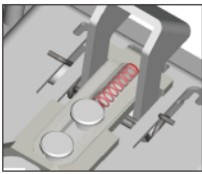
特征说明 Features	H=20, Ts=14	H=36, Ts=29	H=52, Ts=45	H=63, Ts=57
无锁芯 Without insert	KA303-1011	KA303-2011	KA303-3011	KA303-4011
通配锁芯 Standard insert	KA303-1111	KA303-2111	KA303-3111	KA303-4111

面板型提拉把手扣拉锁

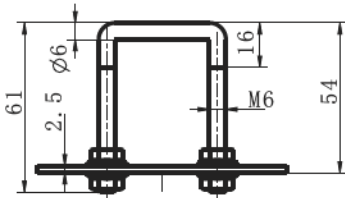
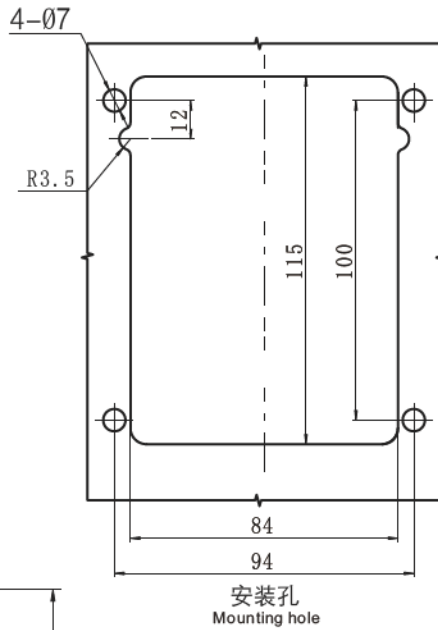
KA811/KA812系列



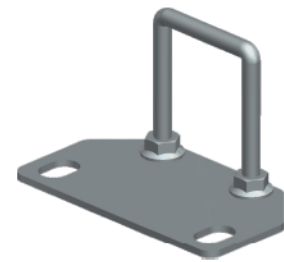
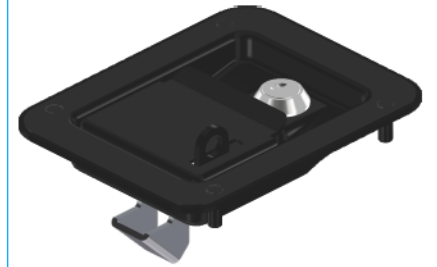
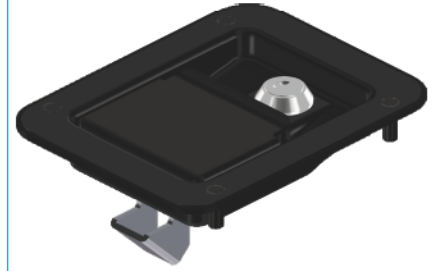
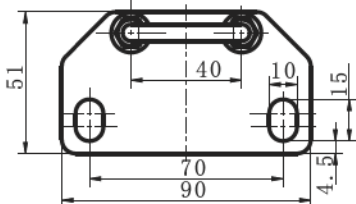
防撞设计  
Anti-collision design



防松设计  
Prevent loosening design



固定扣(选用):KA512-04245



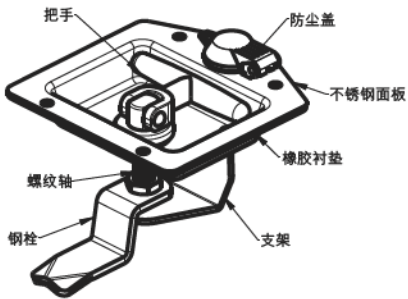
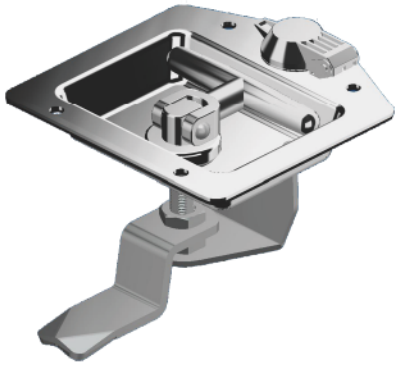
锁具

-材质及表面处理Material and treatment:  
1.碳素钢黑色喷涂面板及把手  
Carbon steel black spraying panel and handle  
2.镀锌钢锁扣及销子Galvanized steel lock and pin;

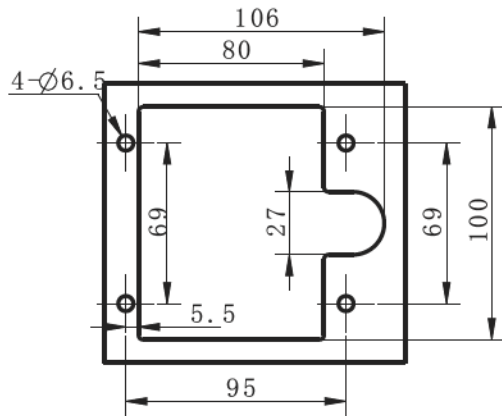
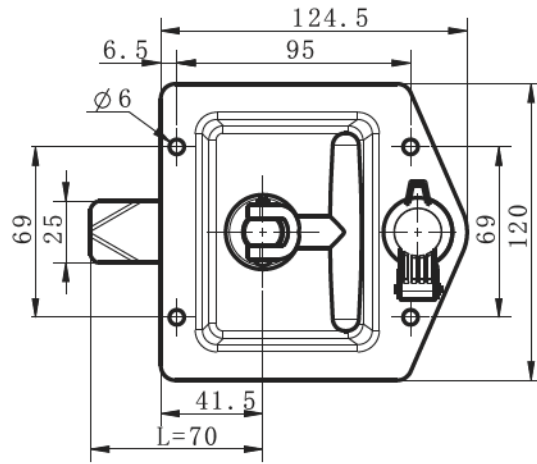
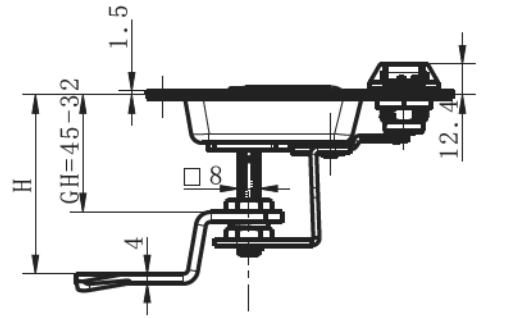
特征说明 Features	H=32,黑色 H=32,Black		H=55,黑色 H=55,Black	
	标准型/Standard	挂锁型/Padlock type	标准型/Standard	挂锁型/Padlock type
无锁芯 Without insert	KA811-1041	KA812-1041	KA811-2041	KA812-2041
通配锁芯 with insert	KA811-1141	KA812-1141	KA811-2141	KA812-2141

KA822系列

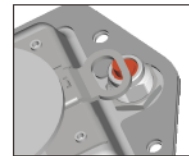
按压弹开摇把锁



-材质及表面处理Material and treatment:  
 1.镀锌钢钢栓,支架,螺杆 Galvanized steel locking tongue, Bracket and screw bar;  
 2.锌合金镀铬把手 Zinc alloy chrome-plated handle  
 3.不锈钢面板 Stainless steel panel



防水设计  
water-proof design



防震设计  
aseismatic design

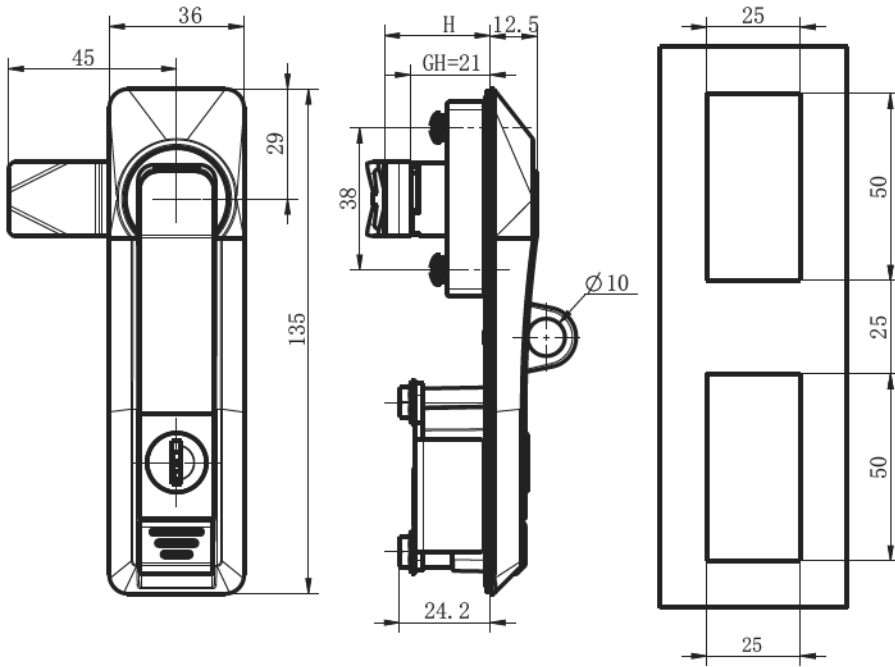
规格型号 specifications

KA822-1150

锁具

按压弹开摇把锁

KA151系列



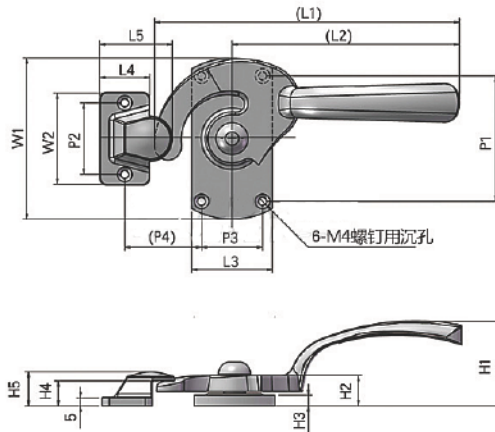
-材质及表面处理Material and treatment:  
1. 镀锌钢锁柱,压板G alvanized steel locking tongue,clamp;  
2. 锌合金黑色锁体Zinc alloy black coated lock body

锁具

标准型 Standard	挂锁型 padlock type
KA151-1111	KA151-2111

紧迫式机械把手

KAS1B系列



特征说明 Features	L1	L2	L3	L4	L5	W1	W2	P1	P2	P3	P4	H1	H2	H3	H4	H5
KSA3B-1L	170	127	45	28	40	90	52	70	40	34	43	49	17	6	14	19
KSA3B-1R																
KSA3B-2L	140	109	40	24	35	80	50	52	34	25	34	43	14	5	12	17
KSA3B-2R																
KSA3B-3L	125	98	32	23	32	65	50	43	35	22	30	36	14	5	12	18
KSA3B-3R																
KSA3B-4L	111	84	30	20	30	60	45	40	32	20	28	35	13	5	10	14.5
KSA3B-4R																
KSA3B-5L	90	68	30	20	30	55	45	37	32	17	28	28	12.5	5	10	14.5
KSA3B-5R																

-材质及表面处理 Material and treatment:  
1. 不锈钢铸件304 Stainless steel castings SUS304;  
2. 性能优异,右开用,左开用  
Performance is excellent, right to use, left open:

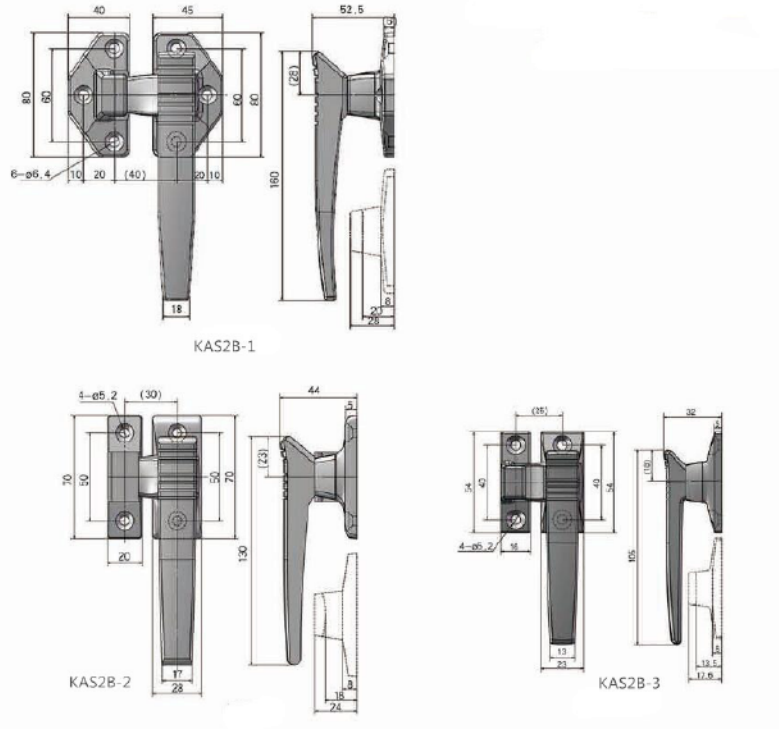


KAS2B-1/2/3系列



-材质及表面处理Material and treatment:  
 1. 不锈钢铸件, 旋转紧迫式密封, 耐腐蚀。手柄的锁定位置可上下左右置换  
 Stainless steel castings, the dragon turned tight seal Corrosion resistant The handle of the lock position to the up and down or so the displacement:  
 2. 不锈钢304材质, 抛光.304  
 stainless steel material, polishing:

压缩式机械把手冷柜机械门锁



特征说明 features

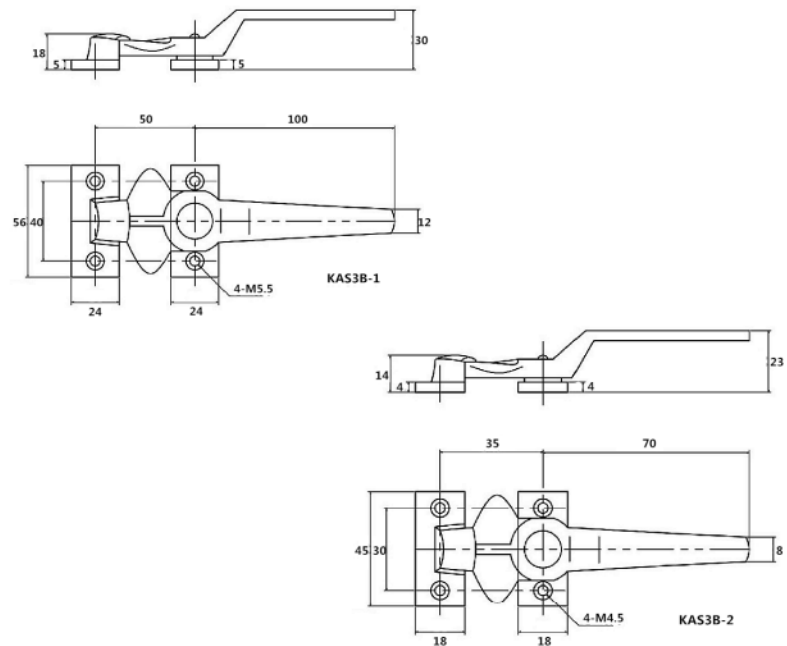
KAS2B-1	KAS2B-2	KAS2B-3
---------	---------	---------

KAS3B系列



-材质及表面处理Material and treatment:  
 不锈钢镜面抛光:SUS304

紧迫式机械把手

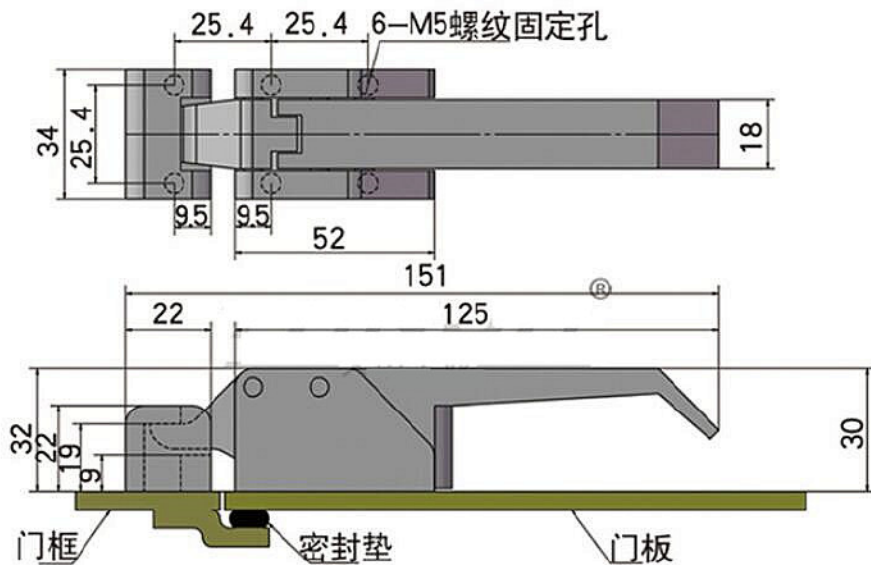


特征说明 features

KAS3B-1	KAS3B-2
---------	---------

高强度把手冷柜机械门锁

KAS9B系列



锁具

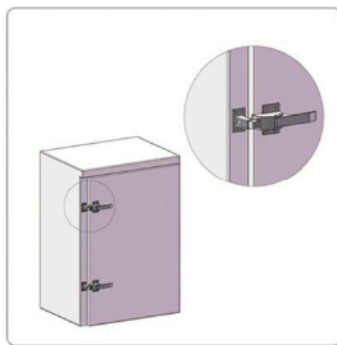
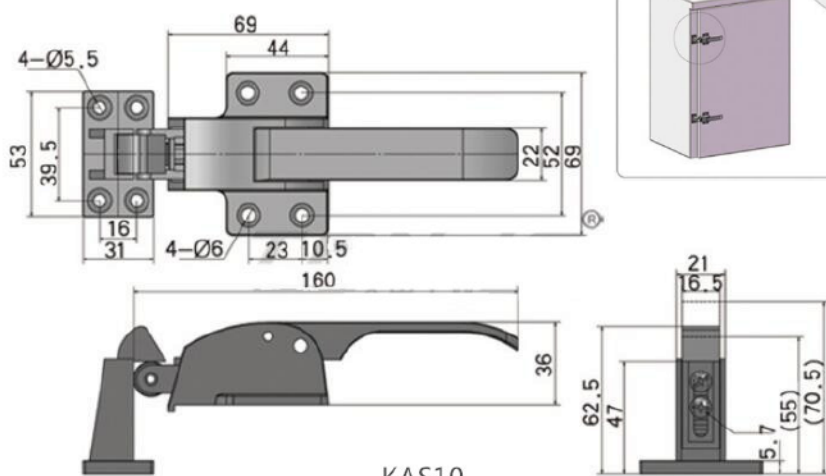
-材质及表面处理Material and treatment:  
1. 锌合金压铸成型Zinc alloy die casting molding;

特征说明  
features

KAS9B

高强度把手冷柜机械门锁

KAS10系列



-材质及表面处理Material and treatment:  
1. 锌合金压铸成型Zinc alloy die casting molding;  
2. 不锈钢铸件304 Stainless steel castings SUS304;

特征说明  
features

锌合金

KAS10

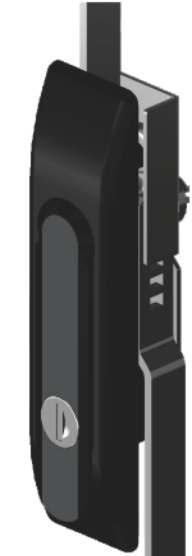
不锈钢

KAS10-1

KA091系列



锁具



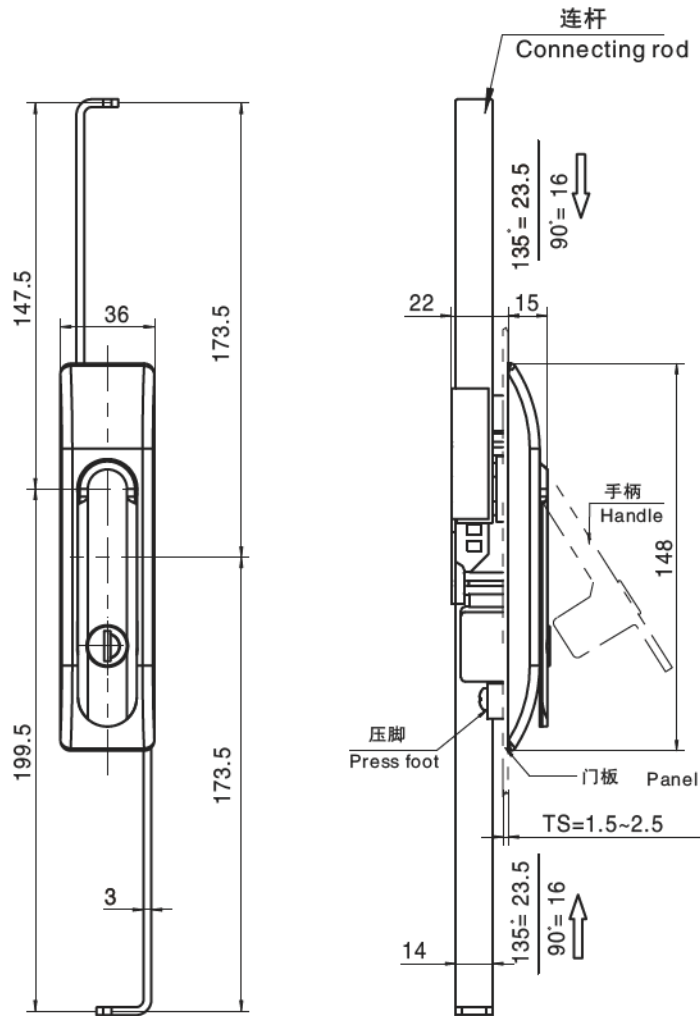
标准型 Standard



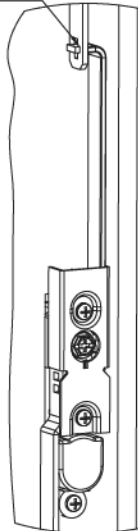
按钮型 Button type

—材质及表面处理Material and treatment:  
 1.镀锌钢齿条. 钢栓, 传动壳;  
 Galvanized steel rack . cam and transmission shell  
 2.锌合金黑色把手 zinc alloy black coated handle;  
 3.黑色PA底座Black PA housing;

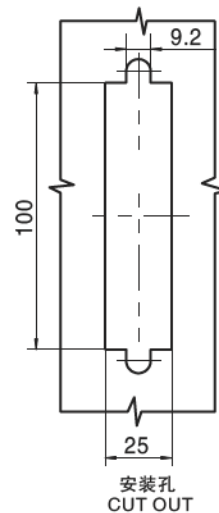
拾拉摇把锁



挂式连接



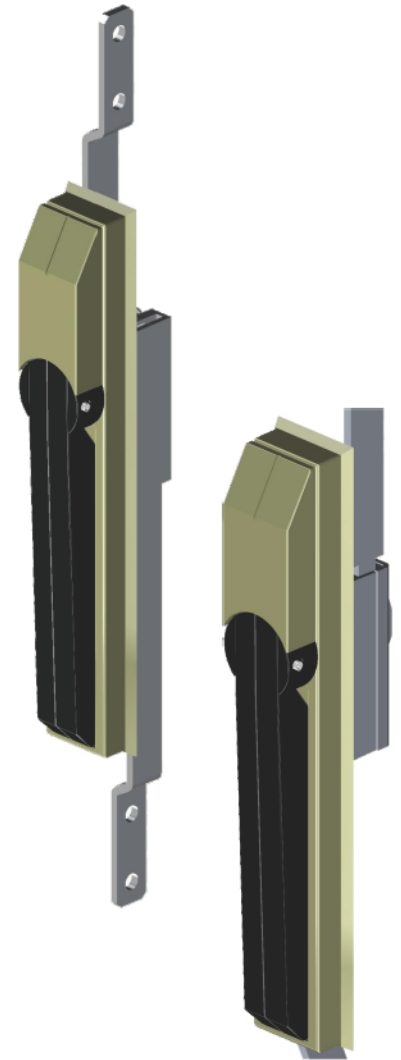
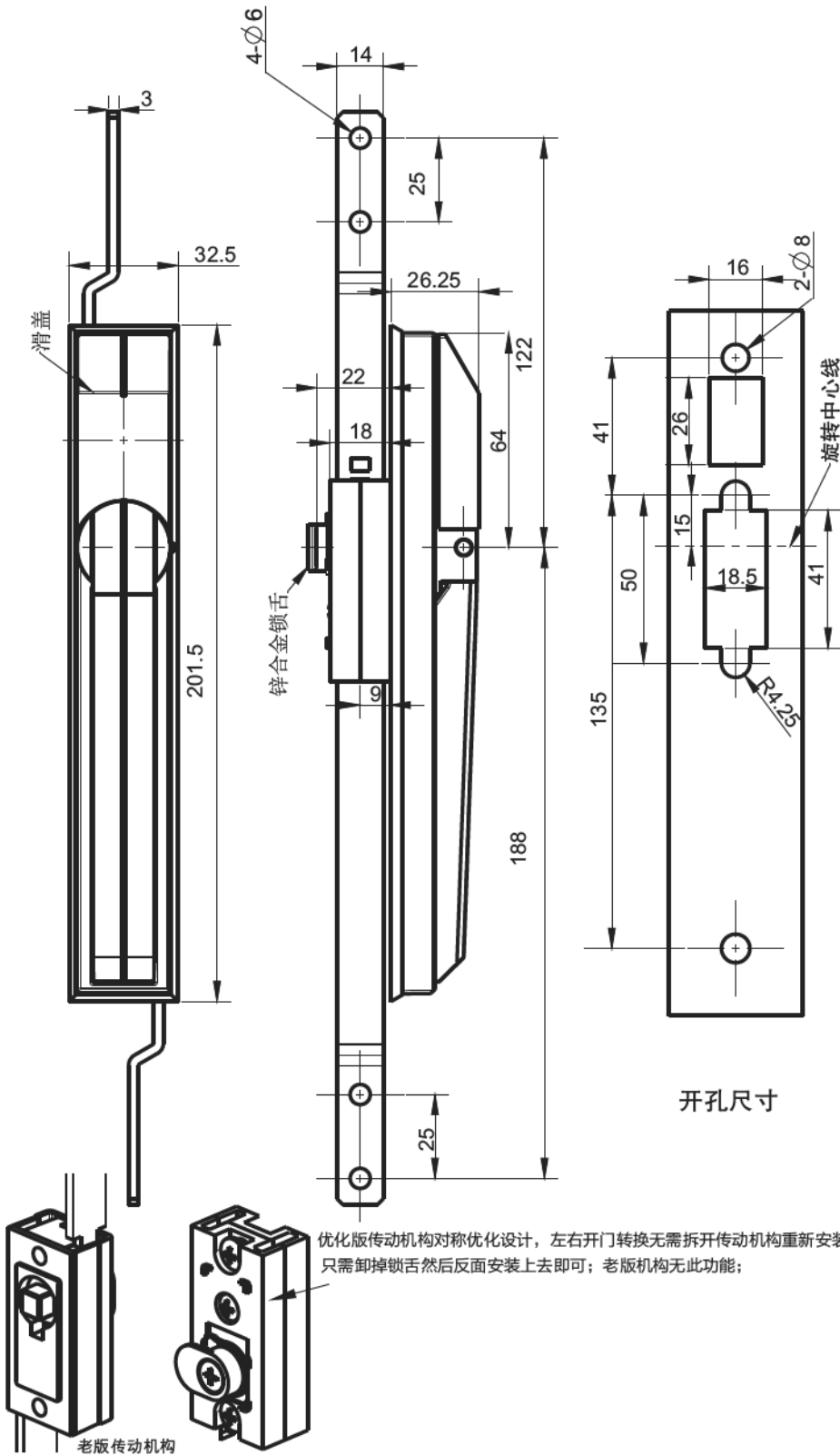
背面安装图  
The installation drawing



标准型 Standard	按钮型 Button type
KA091-1171	KA091-3T71

抬拉摇把锁

KA111系列



KA112-1113

—材质及表面处理Material and treatment:

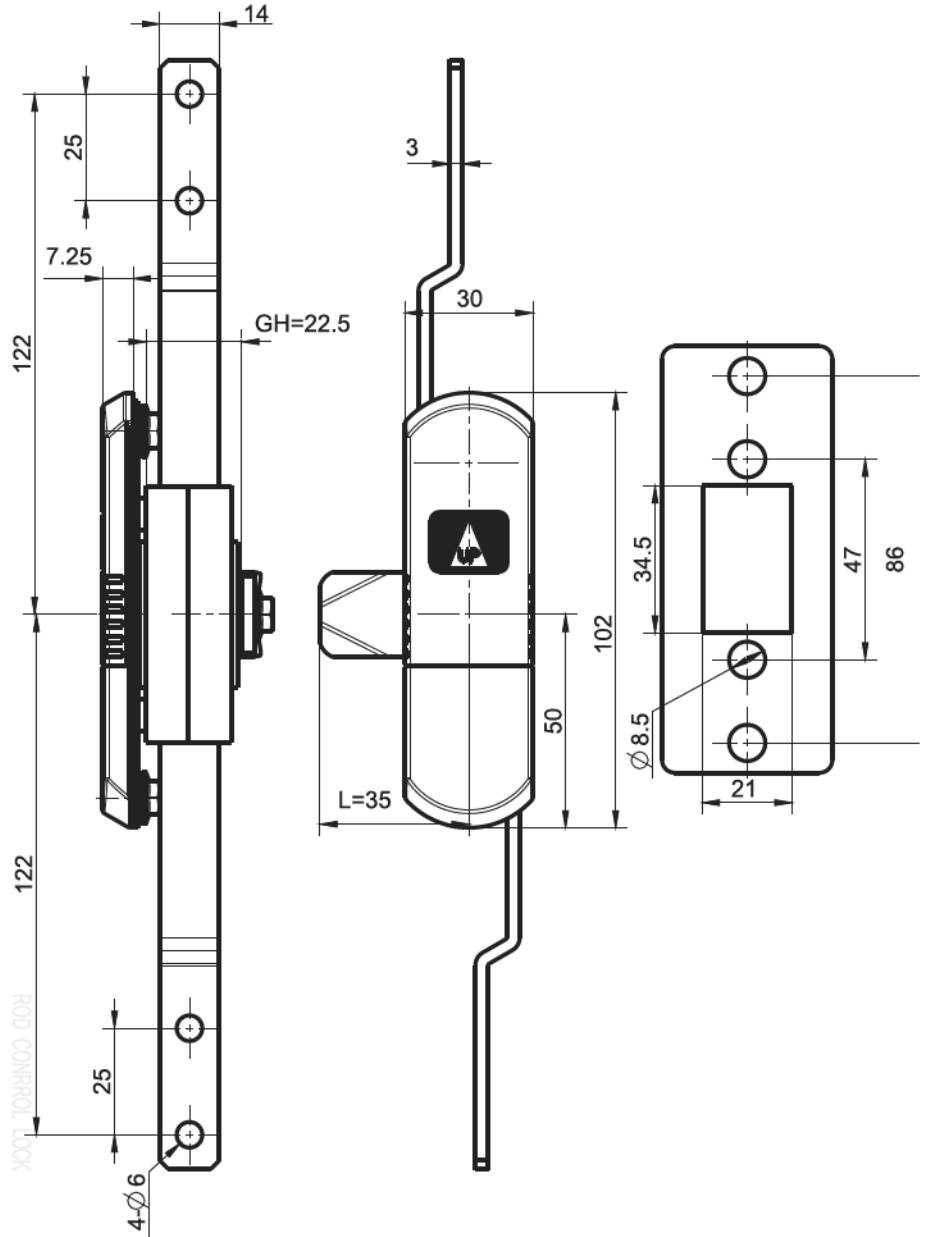
1. 镀锌钢齿条、钢柱, 锌合金镀锌传动壳  
Galvanized steel rack and cam, zinc alloy galvanized transmission shell
2. 锌合金黑色把手, 黄灰基座  
zinc alloy black coated handle. Yellow grey base
3. 不锈钢挂锁扣  
Stainless steel padlock buckle

锁具

普通锁芯型 Ordinary insert		平面弹子锁芯型, 优化版传动机构 Night lock insert		平面弹子锁芯型, 老版传动机构 Night lock insert	
标准型 Standard	挂锁型 Padlock type	标准型 Standard	挂锁型 Padlock type	标准型 Standard	挂锁型 Padlock type
KA111-1113	KA111-2113	KA111-3113	KA111-4113	KA112-1113	KA112-2113

KA121系列

滑盖式工具型拉杆锁



锁具

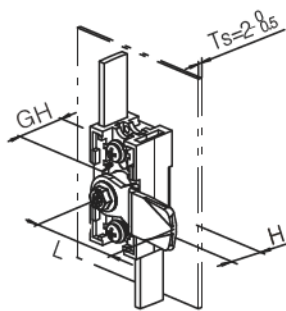
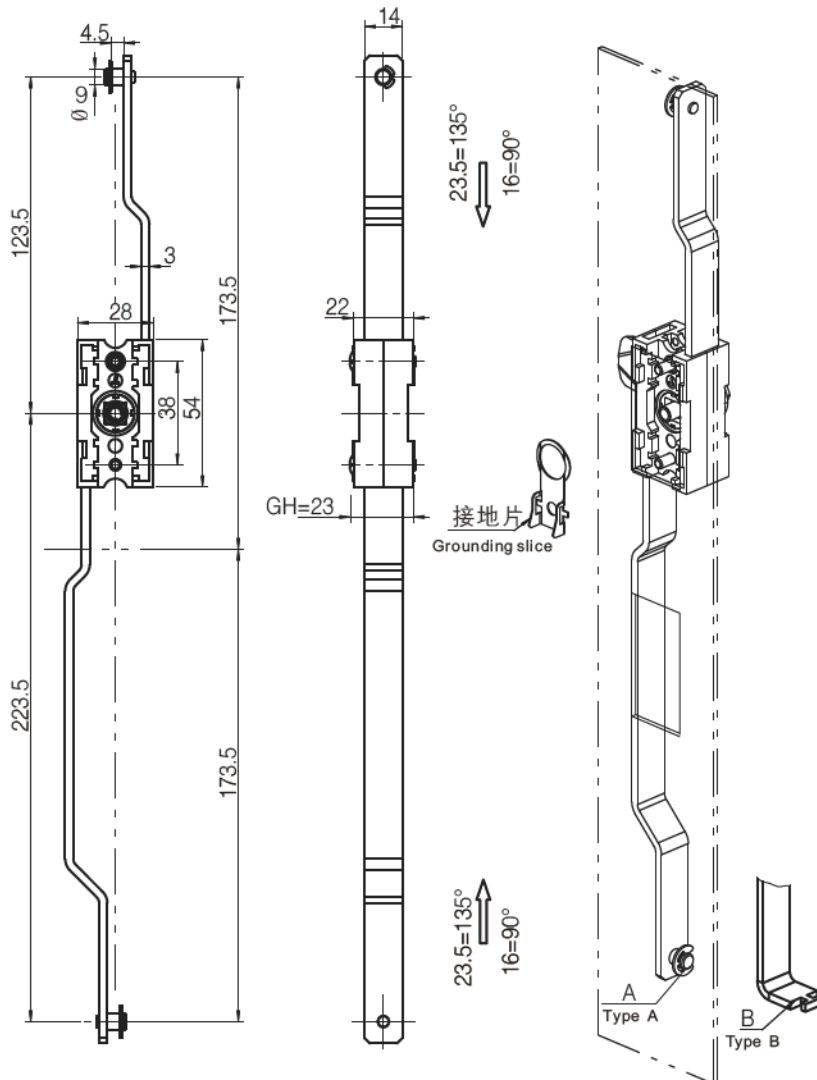
材质及表面处理Material and treatment:

- 1. 镀锌钢齿条.钢柱, 锌合金镀锌传动壳Galvanized steel rack and cam, zinc alloy galvanized transmission shell
- 2. 锌合金银灰喷漆锁体 zinc alloy silver coated lock body

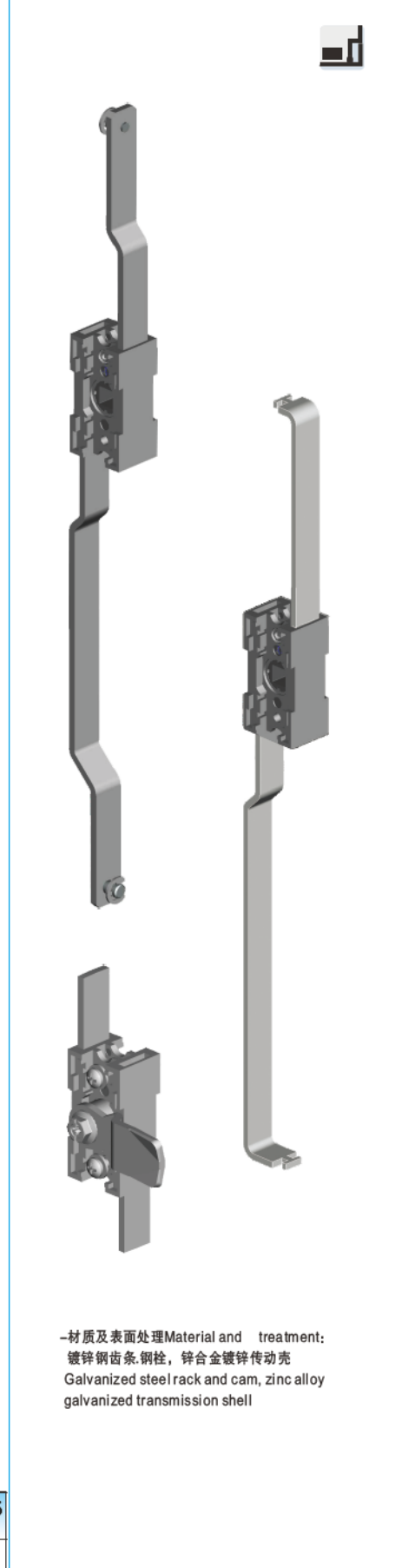
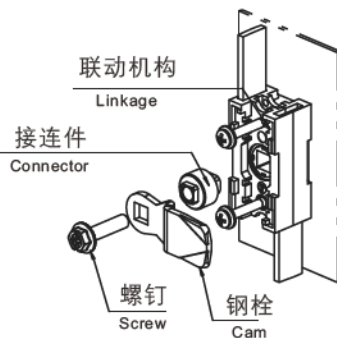
特征说明 Features	锌合金, 亚光 Zinc alloy, silver color coated	适配钥匙 Adaptation key
4mm翼型 4mm Double bit	KA121-1213	705-111
□8X8 Square 8mm	KA121-1613	705-141
三角型8mm	KA121-1913	705-161

扁连体联动机构

KA541系列



带钢栓  
With cam



锁具

-材质及表面处理Material and treatment:  
镀锌钢齿条, 钢栓, 锌合金镀锌传动壳  
Galvanized steel rack and cam, zinc alloy galvanized transmission shell

A式, 无钢栓 Type A, without cam	A式, 带钢栓H=25 L=35 Type A, with cam	B式, 无钢栓 Type B, without cam	B式, 带钢栓H=25 L=35 Type B, with cam
KA541-01115	KA541-01215	KA541-01315	KA541-01415