

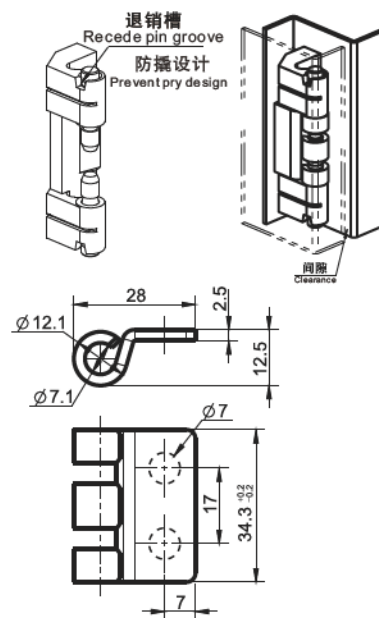
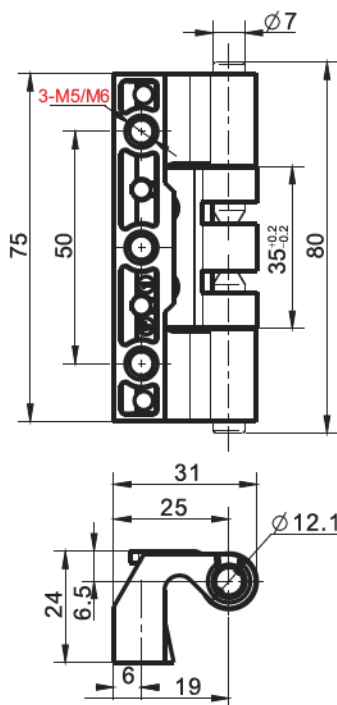
KB101-1系列



-材质及表面处理Material and treatment:
1. 锌合金黑色静铰链Zinc alloy black coated static hinge,
2. 镀锌钢销子及动铰链galvanized steel pin and moving hinge

-最大静载参数Maximum static load parameters:
1. 轴向载荷Axial load:1600N
2. 径向载荷Radial load:900N

卡销式90° 旋转内装铰链



带孔附件:171-01445,单独订购
Attachment:171-01445,Separate order

产品描述Product description	M5螺孔固定 M5 fixed screw holes	M6螺孔固定 M6 fixed screw holes
锌合金zinc	KB101-1112	KB101-1212
不锈钢stainless steel	/	KB101-1250

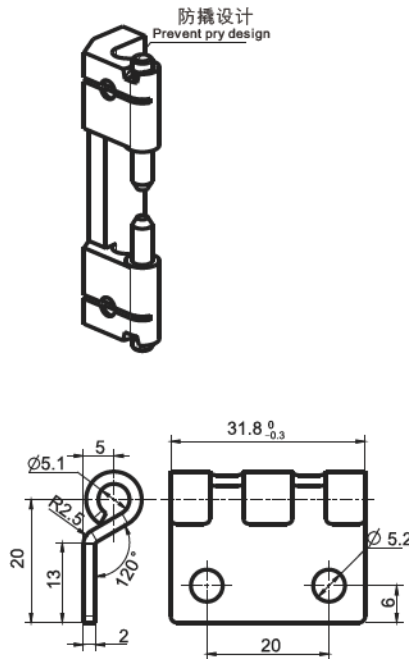
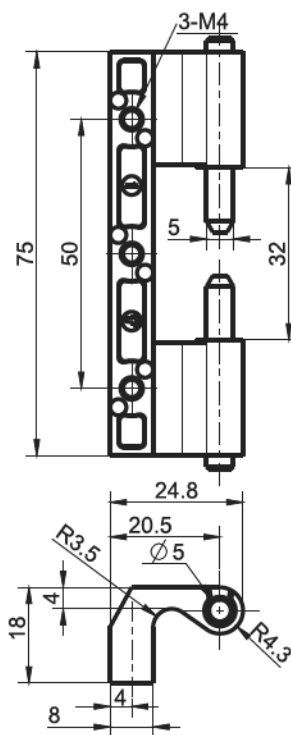
KB101-2系列



-材质及表面处理Material and treatment:
1. 锌合金黑色静铰链Zinc alloy black coated static hinge,
2. 镀锌钢销子及动铰链galvanized steel pin and moving hinge

-最大静载参数Maximum static load parameters:
1. 轴向载荷Axial load:500N
2. 径向载荷Radial load: 400N

卡销式90° 旋转内装铰链

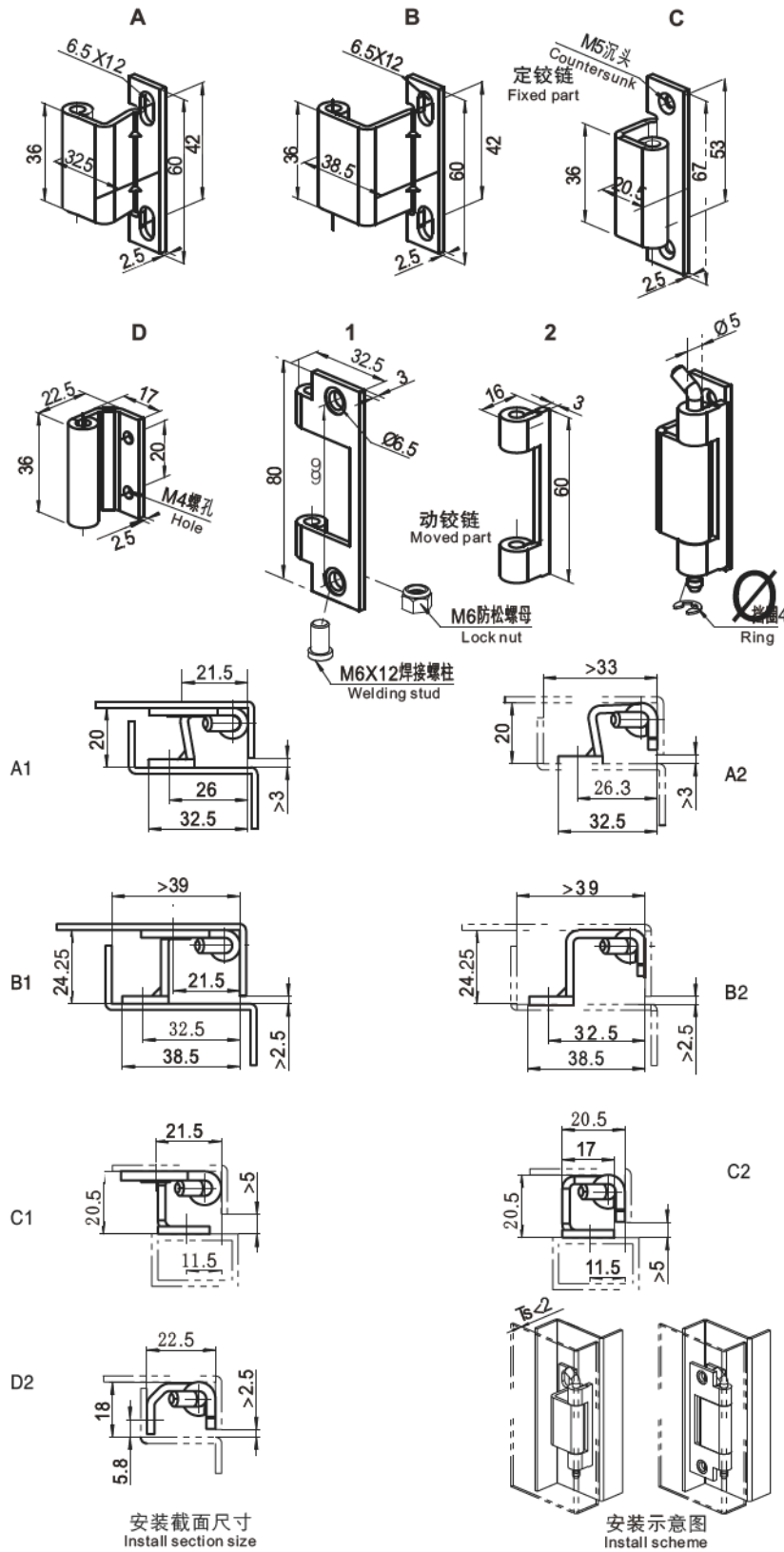
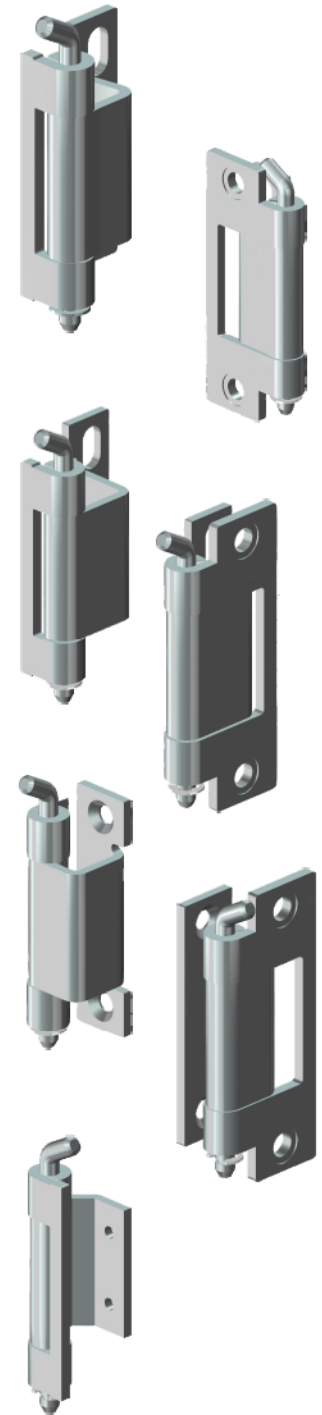


带孔附件:171-01245,单独订购
Attachment:171-01245,Separate order

锌合金铰链 zinc alloy hinge
KB101-2112

插销式内装铰链

KB103系列

安装截面尺寸
Install section size安装示意图
Install scheme

-材质及表面处理Material and treatment:
1.镀锌钢铰链galvanized steel hinge

-最大静载荷参数Maximum static load parameters:
1.轴向载荷Axial load:550N
2.径向载荷Radial load:400N

铰链

组合方式 Combinations	定铰链A Fixed part A	定铰链B Fixed part B	定铰链C Fixed part C	定铰链D Fixed part D
动铰链1 Moved part 1	KB103-1145	KB103-2145	KB103-3145	
动铰链2 Moved part 2	KB103-1245	KB103-2245	KB103-3245	KB103-4245

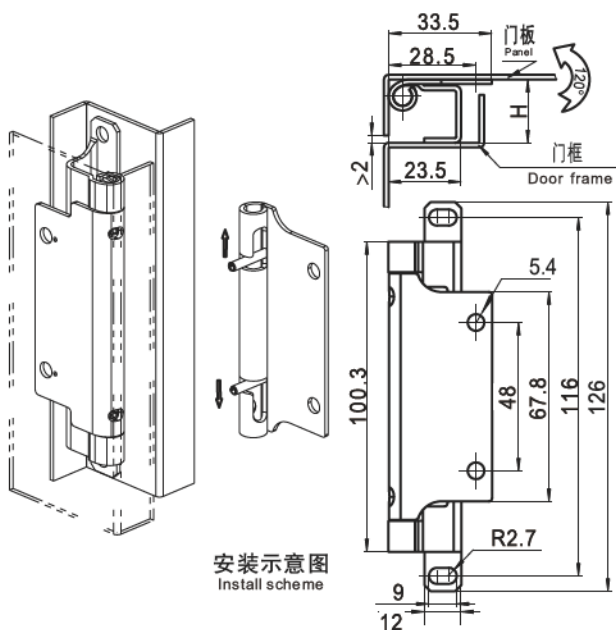
KB105系列

弹簧销内装铰链



-材质及表面处理Material and treatment:
1. 不锈钢铰链Stainless steel hinge

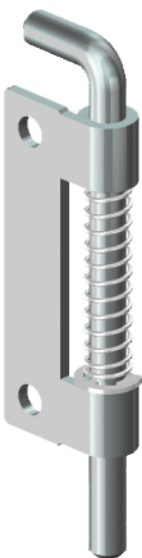
-最大静载荷参数Maximum static load parameters:
1. 轴向载荷Axial load:350N
2. 径向载荷Radial load:280N



H	沉孔固定,镀锌钢 Sink hole fixed, Galvanized steel	沉孔固定,不锈钢 Sink hole fixed, Stainless steel	腰孔固定,镀锌钢 waist hole fixed, Galvanized steel	腰孔固定,不锈钢 waist hole fixed, Stainless steel
23.9	KB105-1145	KB105-1150	KB105-1345	KB105-1350
20.5	KB105-2145	KB105-2150	KB105-2345	KB105-2350
17.5	KB105-3145	KB105-3150	KB105-3345	KB105-3350

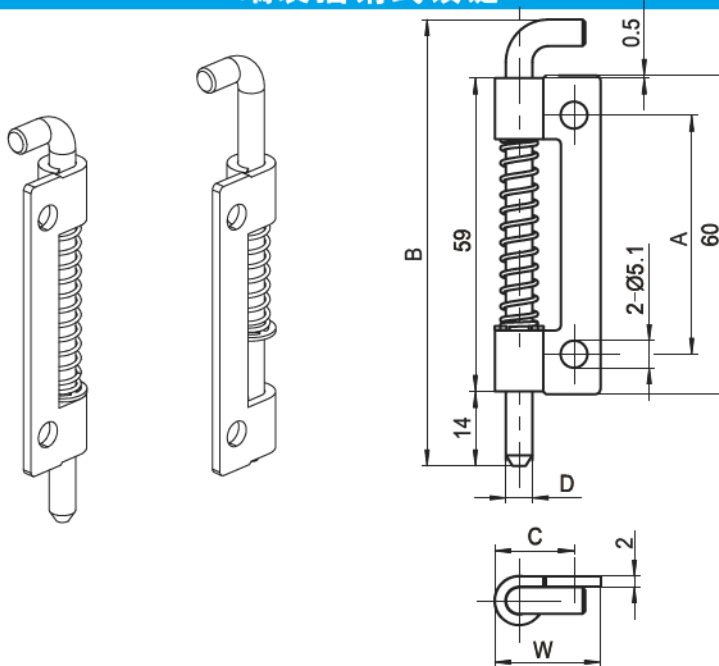
KB106系列

端装插销式铰链



-材质及表面处理Material and treatment:
1. 镀锌钢铰链Galvanized steel hinge

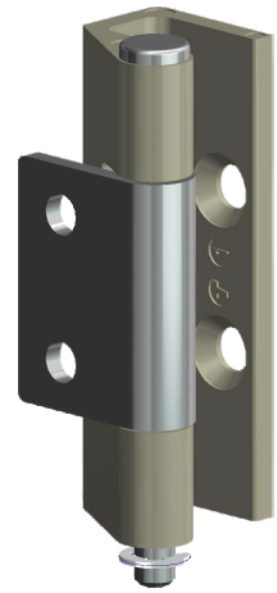
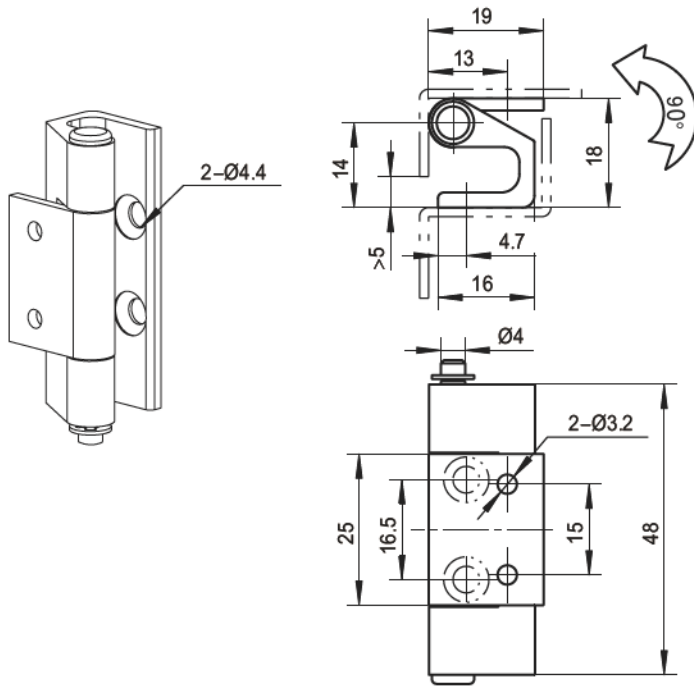
-最大静载荷参数Maximum static load parameters:
1. KB106-1 径向载荷Radial load:250N
2. KB106-2 径向载荷Radial load:150N



镀锌钢 (右装) Galvanized steel (RH)	镀锌钢 (左装) Galvanized steel (LH)	不锈钢 (右装) Stainless steel (RH)	不锈钢 (左装) Stainless steel (LH)	A	B	C	D	W
KB106-1145-R	KB106-1145-L	KB106-1150-R	KB106-1150-L	48	92	18	6	24
KB106-2145-R	KB106-2145-L	KB106-2150-R	KB106-2150-L	45	85	13	5	17.5

焊接内装铰链

KB108-21系列



铰链

-材质及表面处理Material and treatment:
 1. 锌合金镀铬静铰链Zinc alloy Nickel plating static hinge,
 2. 镀锌钢销子及动铰链galvanized steel pin and moving hinge
 3. 全不锈钢304钝化材质, 过盐雾试验480小时
 All stainless steel 304 passivated material, salt spray test for 480h

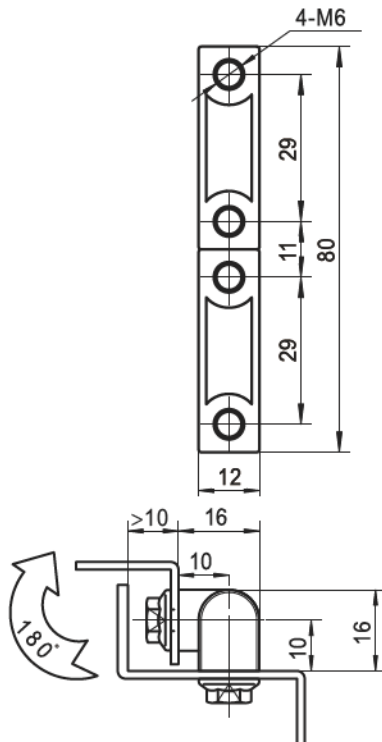
-最大静载荷参数Maximum static load parameters:
 1. 轴向载荷Axial load:230N
 2. 径向载荷Radial load:200N

镀锌钢铰链
Galvanized steel hinge

KB108-211N

框门直角阶梯安装拆卸式铰链

KB201-1系列



-材质及表面处理Material and treatment:
 1. 锌合金镀铬铰链Zinc alloy chrome plated static hinge,
 2. 镀锌钢销子Nickel plated steel pin

-最大静载荷参数Maximum static load parameters:
 1. 轴向载荷Axial load:2600N
 2. 径向载荷Radial load:1000N

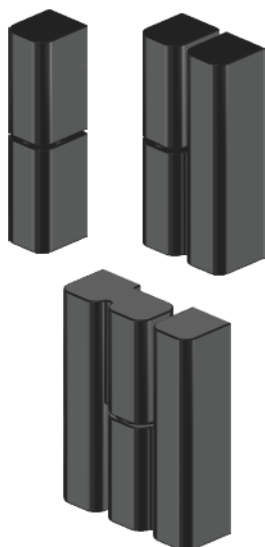
锌合金,镀铬
Zinc alloy, Chromium plating

KB201-1016

不锈钢304
Stainless steel 304

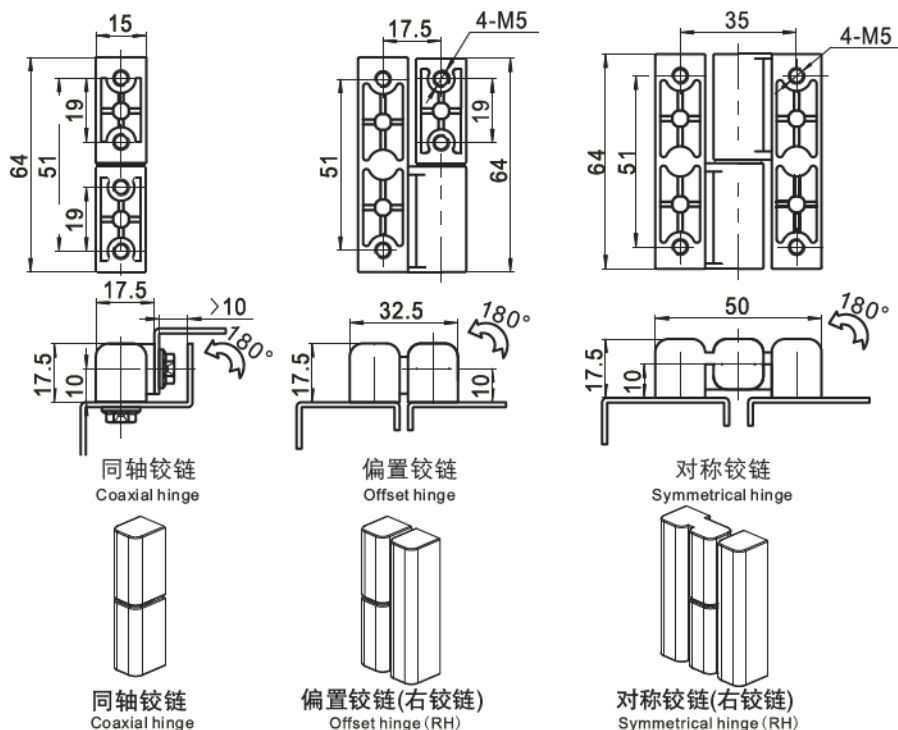
KB201-1050

KB202-1/2/3系列



-材质及表面处理Material and treatment:
1. 锌合金黑色铰链Zinc alloy black coated hinge,
-最大静载荷参数Maximum static load parameters:
1. 轴向载荷Axial load:2200N
2. 径向载荷Radial load:1300N

拆卸式铰链



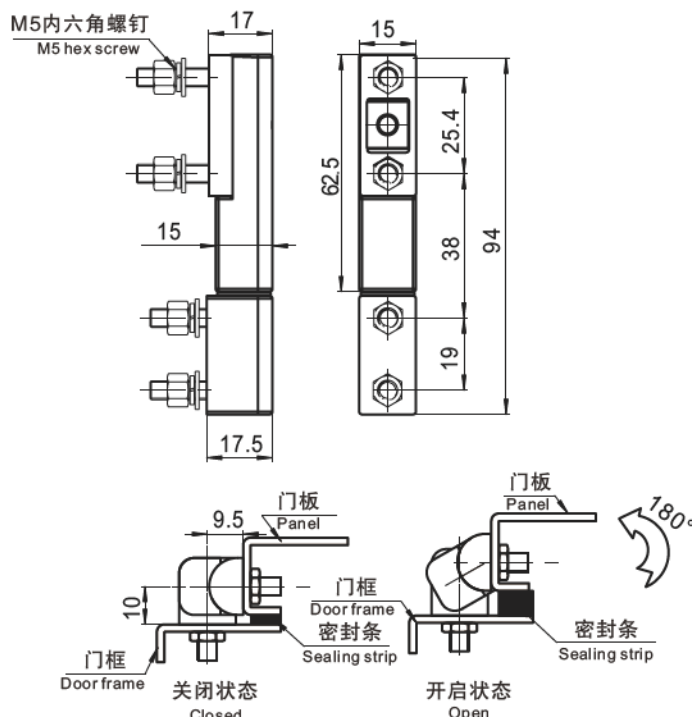
同轴铰链 Coaxial hinge	偏置铰链右铰链 Offset hinge (RH)	偏置铰链左铰链 Offset hinge (LH)	对称铰链右铰链 Symmetrical hinge (RH)	对称铰链左铰链 Symmetrical hinge (LH)
KB202-1111	KB202-2111	KB202-2211	KB202-3111	KB202-3211

KB202-4系列

框门直角阶梯安装铰链



-材质及表面处理Material and treatment:
1. 锌合金黑色铰链Zinc alloy black coated hinge,
-最大静载荷参数Maximum static load parameters:
1. 轴向载荷Axial load:2000N
2. 径向载荷Radial load:1000N



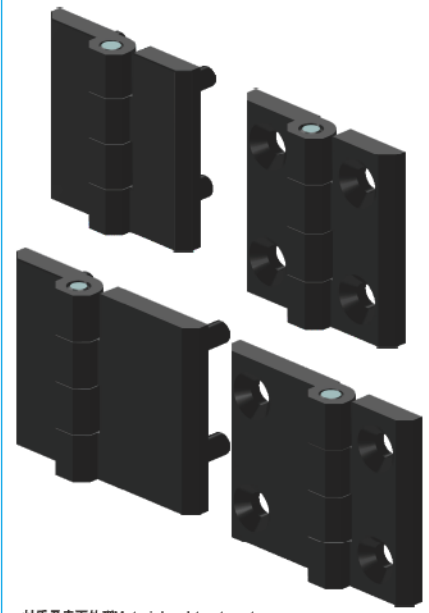
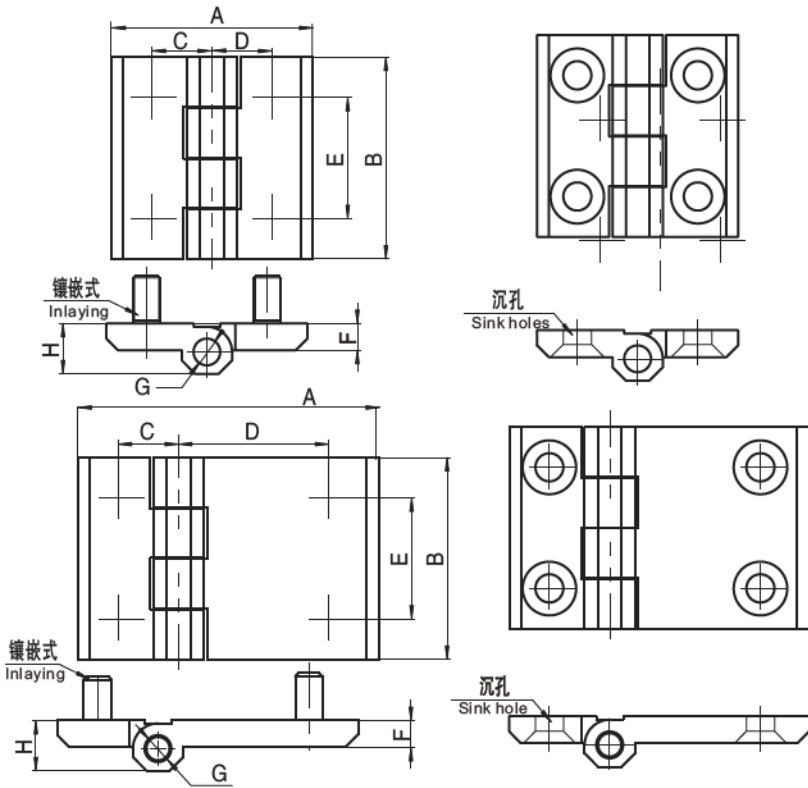
黑色锌合金铰链
Black zinc alloy hinge

KB202-4111

平装铰链

KB204系列

铰链



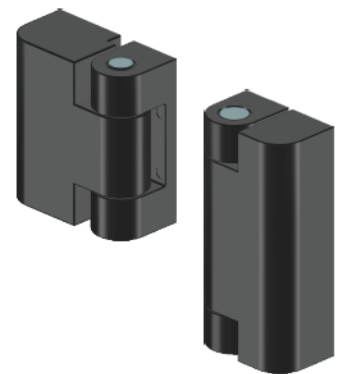
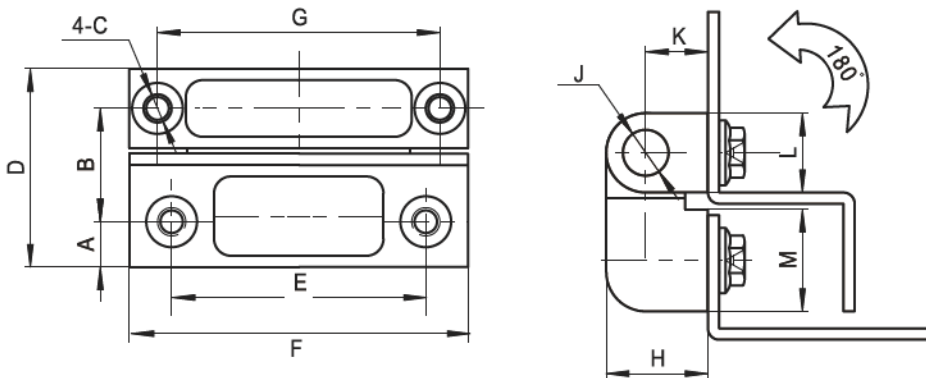
-材质及表面处理Material and treatment:
 1. 锌合金黑色铰链Zinc alloy black coated hinge,
 2. 镀镍钢销子Nickel plated steel pin

-最大静载荷参数Maximum static load parameters:
 1. KB204-1轴向载荷Axial load:1000N, 径向载荷Radial load:800N
 2. KB204-2/4/6轴向载荷Axial load:1300N, 径向载荷Radial load:1000N
 3. KB204-3/5/7轴向载荷Axial load:1800N, 径向载荷Radial load:1500N

镶嵌式 Inlaying		沉孔式 Sink holes			A	B	C	D	E	F	G	H
黑色, 锌合金 Black, zinc alloy	螺钉规格 Screw specifications	黑色, 锌合金 Black, zinc alloy	不锈钢 Stainless steel	沉孔规格 Hole specification								
KB204-1111	M5X12	KB204-1211	KB204-1250	5.3X90°	40	40	12.5	12.5	25	5	4	9
KB204-2111	M6X12	KB204-2211	KB204-2250	6.3X90°	50	50	15	15	30	6	6	11.5
KB204-3111	M8X14	KB204-3211	KB204-3250	8.3X90°	60	60	18	18	36	8	8	15
KB204-4111	M6X12	KB204-4211	KB204-4250	6.3X90°	76	50	28	28	30	6	6	11.5
KB204-5111	M8X14	KB204-5211	KB204-5250	8.3X90°	120	60	45	45	36	8	8	15
KB204-6111	M6X12	KB204-6211	KB204-6250	6.3X90°	63	50	15	28	30	6	6	11.5
KB204-7111	M8X14	KB204-7211	KB204-7250	8.3X90°	90	60	18	45	36	8	8	15

平装铰链

KB205系列



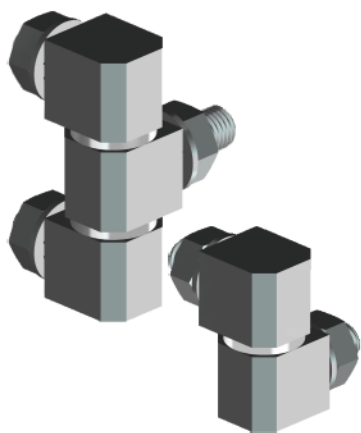
普通型 ordinary	A	B	C	D	E	F	G	H	J	K	L	M
KB205-1111	4	13	M4	22	22	30	22	13	Ø5	8	10	9
KB205-2111	4	18.5	M4	27.5	22	30	22	13	Ø5	8	10	14.5
KB205-3111	8	20	M5	35	45	60	50	18	Ø8	11	14	18
KB205-4111	7	15	M5	29	45	60	50	18	Ø8	11	14	14

-材质及表面处理Material and treatment:
 1. 锌合金黑色铰链Zinc alloy black coated hinge,
 2. 镀镍钢销子Nickel plated steel pin

-最大静载荷参数Maximum static load parameters:
 1. KB205-1轴向载荷Axial load:800N, 径向载荷Radial load:550N
 2. KB205-2轴向载荷Axial load:700N, 径向载荷Radial load:550N
 3. KB205-3/4轴向载荷Axial load:1200N, 径向载荷Radial load:1000N

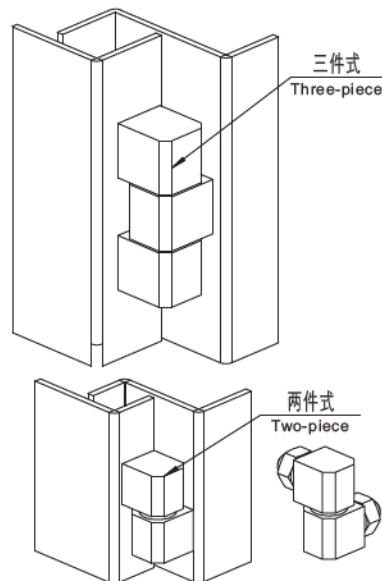
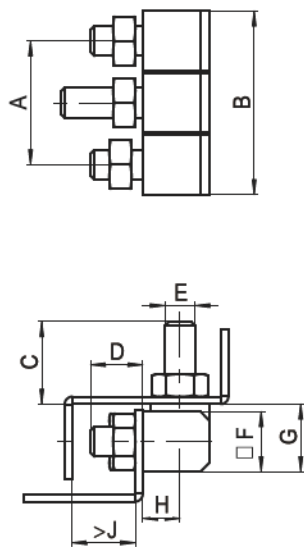
KB206-1/2系列

直角阶梯安装铰链



-材质及表面处理Material and treatment:
1.镀锌钢铰链galvanized steel hinge
2.不锈钢铰链SUS304 Stainless steel hinge304

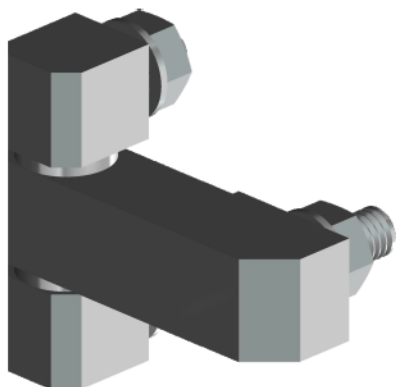
-最大静载参数Maximum static load parameters:
KB206-11/21轴向载荷Axial load:1000N 径向载荷Radial load:900N
KB206-12/22轴向载荷Axial load:1700N 径向载荷Radial load:1500N



结构形式 Structure	镀锌钢 Galvanized steel	不锈钢304 Stainless steel 304	A	B	C	D	E	F	G	H	J
三件式 Three-piece	KB206-1145	KB206-1150	27.2	39.2	14	10	M6	12	13.5	7.5	12
	KB206-1245	KB206-1250	33	49	22	14	M8	16	18	10	16
两件式 Two-piece	KB206-2145	KB206-2150	13.6	19.6	10	10	M6	12	13.5	7.5	12
	KB206-2245	KB206-2250	33	49	14	14	M8	16	18	10	16

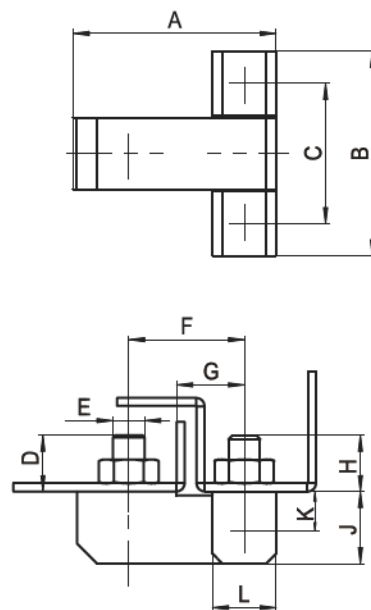
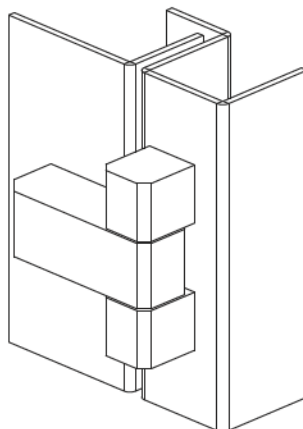
KB206-3/4系列

平装铰链



-材质及表面处理Material and treatment:
1.镀锌钢铰链galvanized steel hinge

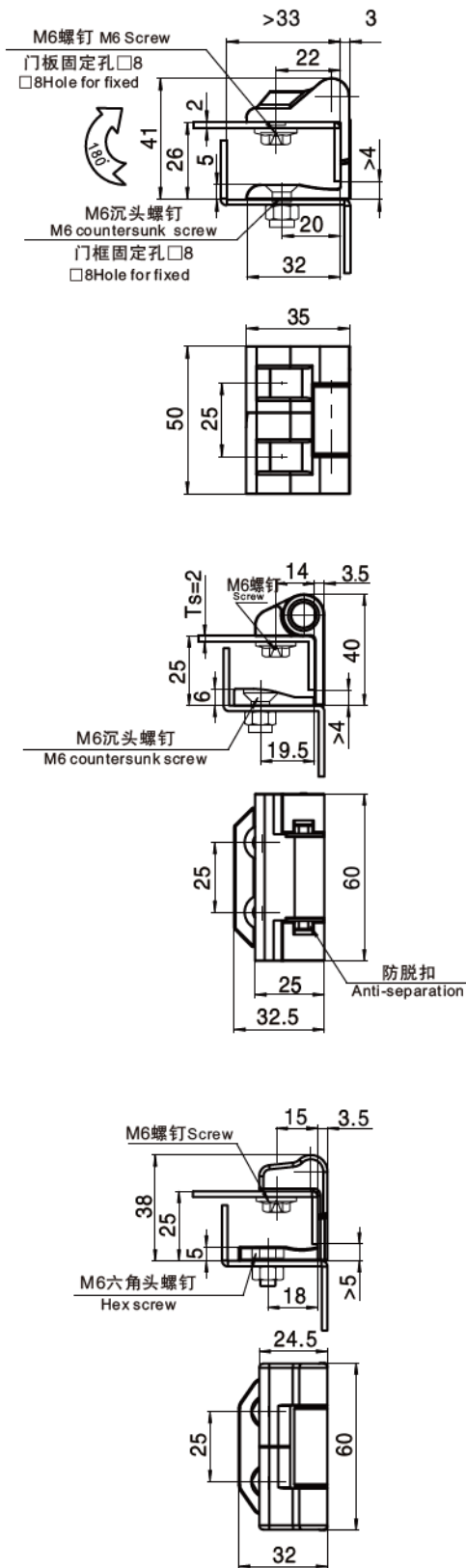
-最大静载参数Maximum static load parameters:
KB206-31/22轴向载荷Axial load:1300N 径向载荷Radial load:1200N
KB206-41/42轴向载荷Axial load:2200N 径向载荷Radial load:1800N



镀锌钢 Galvanized steel	不锈钢304 Stainless steel 304	A	B	C	D	E	F	G	H	J	K	L
KB206-3145	KB206-3150	45	40.2	28.2	16	6	30	21	10	13.5	7.5	12
KB206-3245	KB206-3250	53	40.2	28.2	14	6	38	29	10	13.5	7.5	12
KB206-4145	KB206-4150	50	51	35	16	8	29	16	14	18	10	16
KB206-4245	KB206-4250	61	51	35	14	8	40	27	14	18	10	16

外包式柜门侧装铰链

KB212系列



铰链

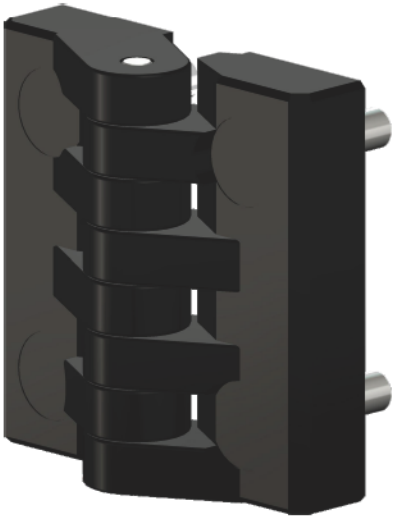
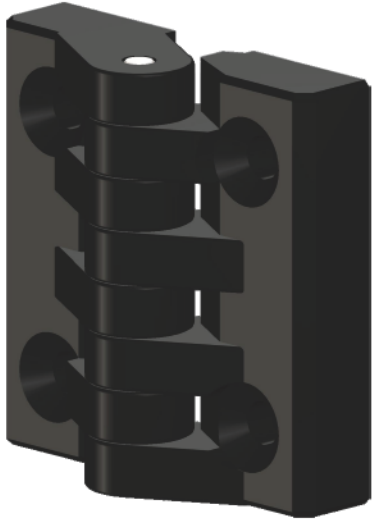
-材质及表面处理Material and treatment:
1. 锌合金黑色铰链 Zinc alloy black coated hinge,
2. 镀镍钢销子 Nickel plated steel pin
3. 黑色尼龙卡销 Black nylon clip pin

-最大静载荷参数 Maximum static load parameters:
1. 轴向载荷 Axial load: 900N
2. 径向载荷 Radial load: 750N

A型锌合金黑色 Type A, zinc alloy, Black	B型锌合金黑色 Type B, zinc alloy, Black	C型锌合金黑色 Type C, zinc alloy, Black
KB212-1111	KB212-2111	KB212-3111

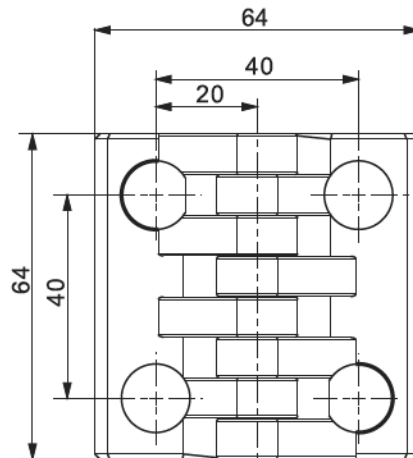
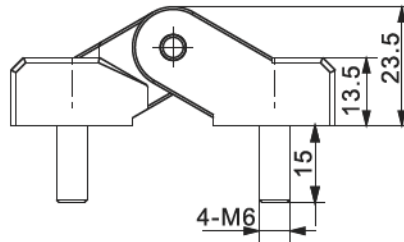
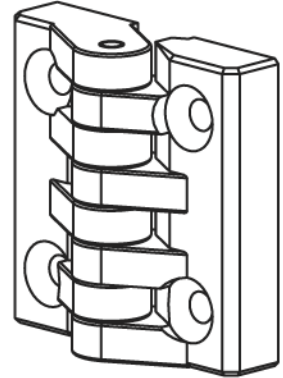
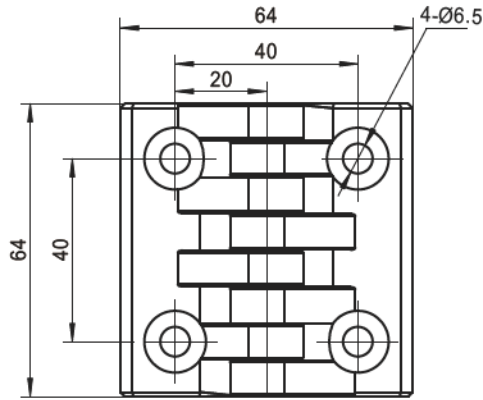
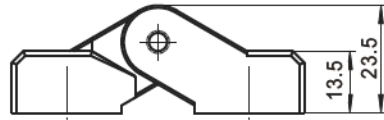
KB224-1系列

PA平装铰链



-材质及表面处理Material and treatment:
 1.黑色PA铰链BlackPA hinge
 2.不锈钢销子Stainless steel pin

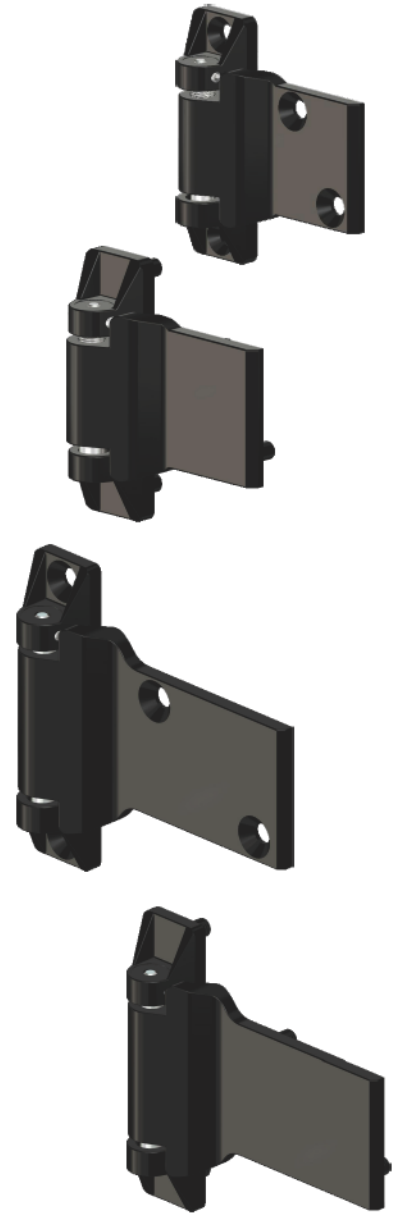
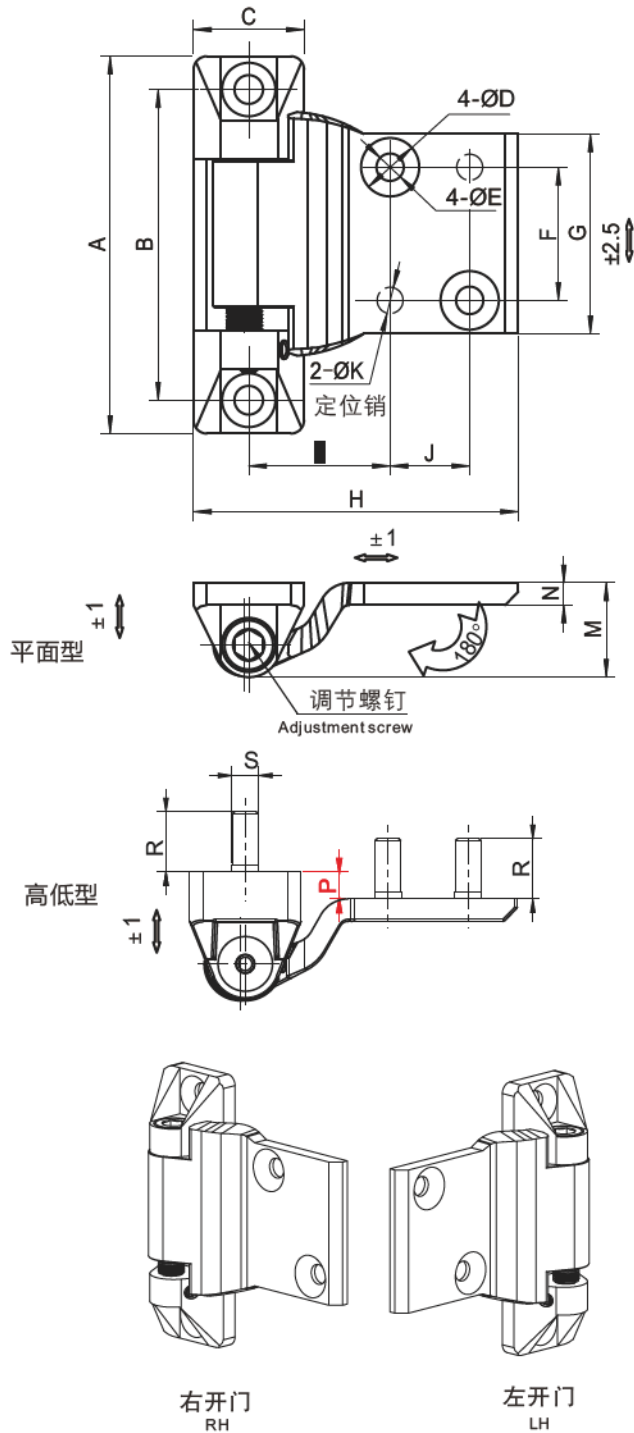
-最大静载荷参数Maximum static load parameters:
 1.轴向载荷Axial load:1350N
 2.径向载荷Radial load:1000N



沉孔型/Sink hole	螺柱型/stud type
KB224-1170	KB224-1270

平装3D调隙铰链

KB225系列



铰链

-材质及表面处理Material and treatment:
1. 锌合金黑色铰链Zinc alloy black coated hinge,
2. 不锈钢转轴Stainless steel shaft

-最大静载荷参数Maximum static load parameters:
KB225-1/3. 轴向载荷Axial load:1350N, 径向载荷Radial load:1600N
KB225-2/4. 轴向载荷Axial load:1800N, 径向载荷Radial load:2200N

说明/instructions	沉孔右开门 (RH) Sink type	沉孔左开门 (LH) Sink type	螺柱右开门 (RH) Bolt type	螺柱左开门 (LH) Bolt type	沉孔无调节 Sink type no adjustment	螺柱无调节 Bolt type no adjustment	A	B	C	D	E	F	G	H	J	K	L	M	N	P	R	S
平面型 (小)	KB225-1111	KB225-1211	KB225-1311	KB225-1411	KB225-1511	KB225-1611	85	70	25	Ø13	Ø6.2	30	45	72.5	18	Ø6	33	21	5	6	13.5	M6
高低型 (小)	KB225-3111	KB225-3211	KB225-3311	KB225-3411	KB225-3511	KB225-3611	130	110	30	Ø19	Ø9	40	60	135	55	Ø6	50	27.5	6.5	6	14.5	M8
平面型 (大)	KB225-2111	KB225-2211	KB225-2311	KB225-2411	KB225-2511	KB225-2611																
高低型 (大)	KB225-4111	KB225-4211	KB225-4311	KB225-4411	KB225-4511	KB225-4611																

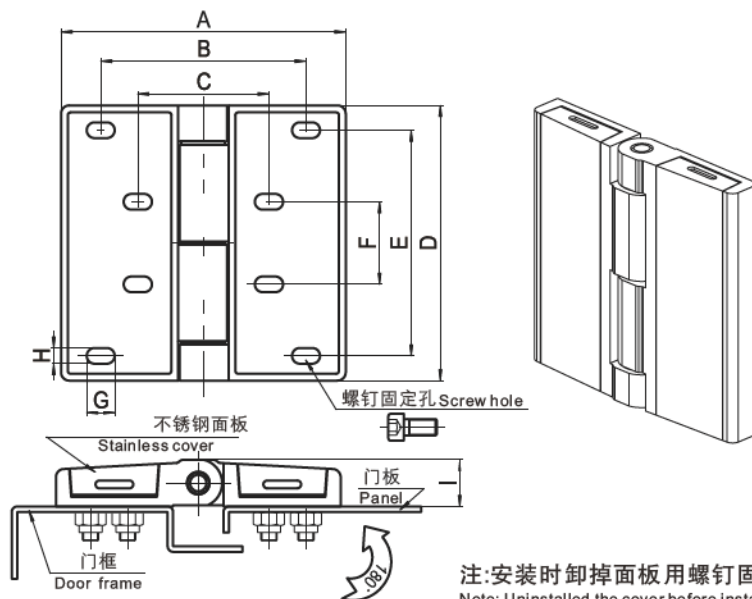
KB214系列



-材质及表面处理Material and treatment:
 1. 锌合金砂铬铰链顶Zinc alloy sand chrome hinge seat
 2. 拉丝不锈钢盖板Brushed stainless steel cover
 3. 不锈钢销子Stainless steel pin

-最大静载荷参数Maximum static load parameters:
 1. KB214-1轴向往载Axial load:1600N, 径向载荷Radial load:1800N
 2. KB214-2轴向往载Axial load:1200N, 径向载荷Radial load:1500N
 3. KB214-3轴向往载Axial load:900N, 径向载荷Radial load:1050N

测试设备用螺钉隐藏式铰链



注:安装时卸掉面板用螺钉固定;
 Note: Uninstalled the cover before installation screws

产品型号 Product model	A	B	C	D	E	F	G	H	I	配用螺钉 Matching screw
KB214-1119	104	75	48	100	82	30	10	6	17	M6
KB214-2119	86	62	42	80	55	25	8	5	14.5	M5
KB214-3119	63	45.5	30.5	60	40	20	5.5	4	11.5	M4

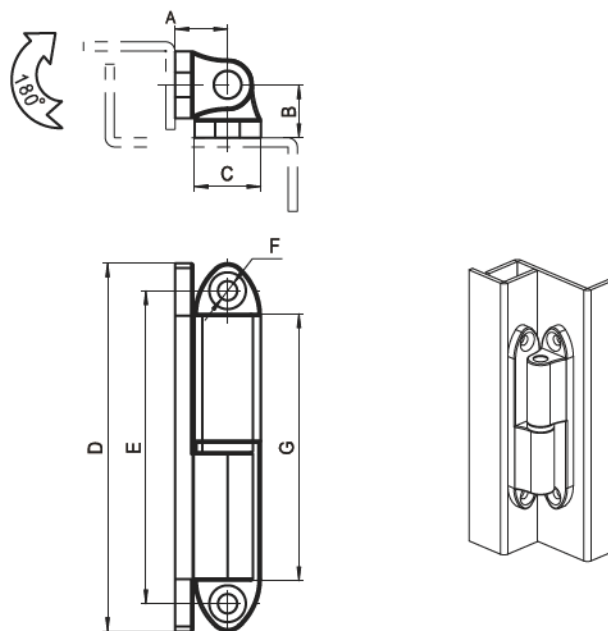
KB218系列



-材质及表面处理Material and treatment:
 1. 锌合金镀铬铰链Zinc alloy chrome plated static hinge,
 2. 镀镍钢销子Nickel plated steel pin

-最大静载荷参数Maximum static load parameters:
 KB218-1轴向往载Axial load:300N, 径向载荷Radial load:260N
 KB218-2轴向往载Axial load:600N, 径向载荷Radial load:350

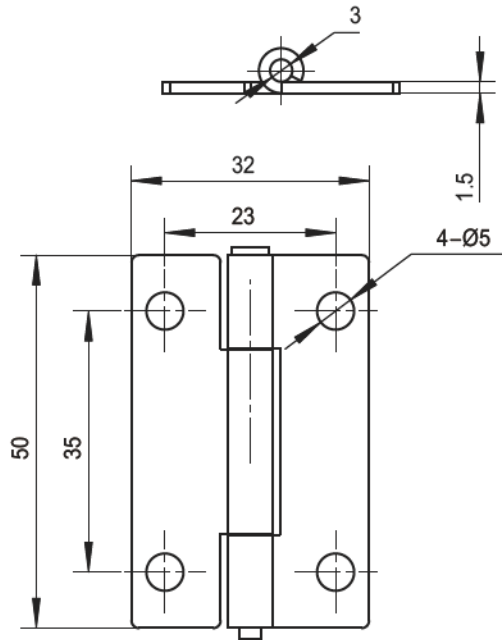
直角阶梯安装可拆卸铰链



产品型号 Product code	A	B	C	D	E	F
KB218-1116	9.5	9.5	13	60	48	Ø4.2
KB218-2116	11.5	11.5	14.5	80	68	Ø4.2

平装不锈钢铰链

KB221-1系列



-材质及表面处理Material and treatment:
1. 不锈钢铰链SUS304 Stainless steel hinge304

-最大静载荷参数Maximum static load parameters:
1. 轴向载荷Axial load:350N
2. 径向载荷Radial load:300N

带孔 With holes

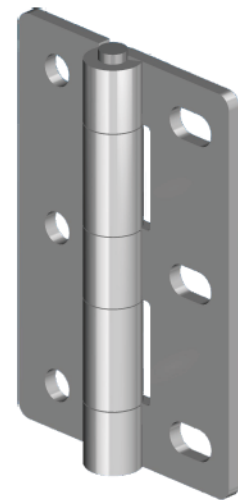
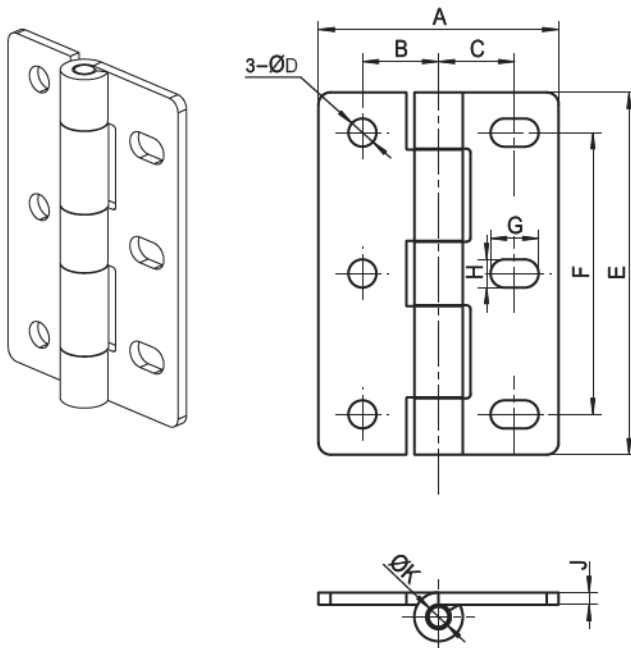
无孔 With out holes

KB221-1150

KB221-1250

平装不锈钢铰链

KB221-2系列

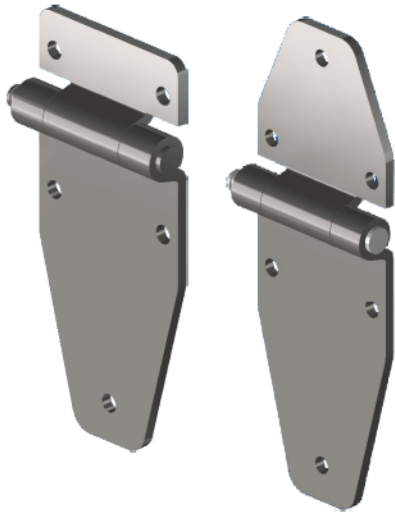


-材质及表面处理Material and treatment:
1. 不锈钢铰链Stainless steel hinge

-最大静载荷参数Maximum static load parameters:
KB221-1轴向载荷Axial load:1600N.径向载荷Radial load:1300N
KB221-2轴向载荷Axial load:1000N.径向载荷Radial load:800N

产品型号 Product model	A	B	C	D	E	F	G	H	J	K
KB221-2150	60	19	19	7	90	70	12	7	3	6
KB221-2250	50	15	15	5.5	75	54	12	6	2	5

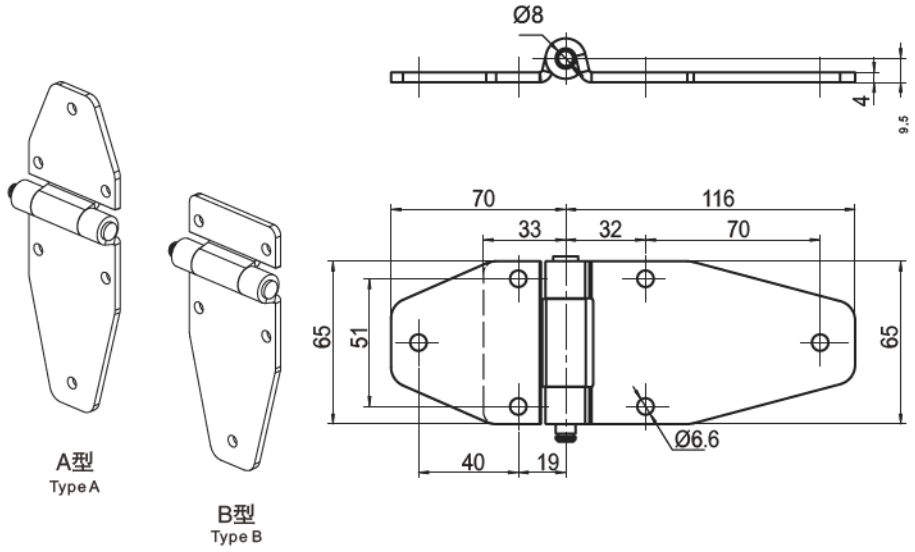
KB221-3系列



-材质及表面处理Material and treatment:
1. 不锈钢铰链Stainless steel hinge

-最大静载荷参数Maximum static load parameters:
1. 轴向载荷Axial load:3000N
2. 径向载荷Radial load:3200N

平装不锈钢重型铰链



A型
Type A

B型
Type B

产品描述Product description

A型 Type A

KB221-3150

B型 Type B

KB221-3250

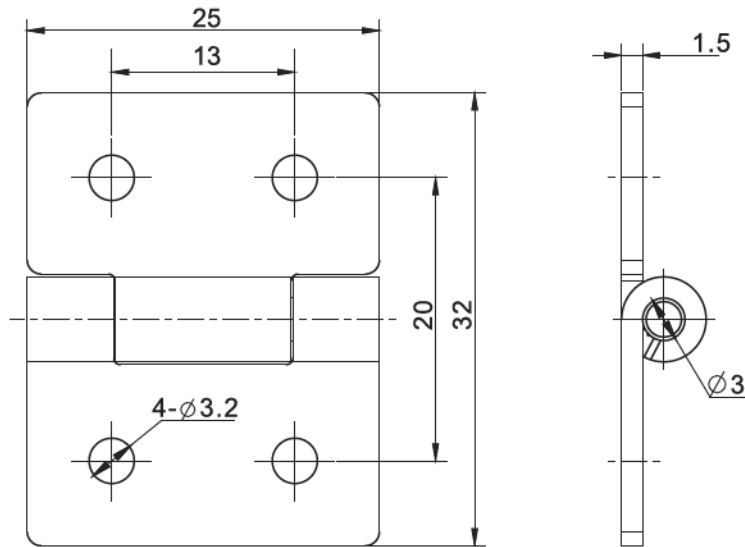
KB221-5系列



-材质及表面处理Material and treatment:
1. 不锈钢铰链Stainless steel hinge

-最大静载荷参数Maximum static load parameters:
1. 轴向载荷Axial load:750N
2. 径向载荷Radial load:400N

平装不锈钢铰链



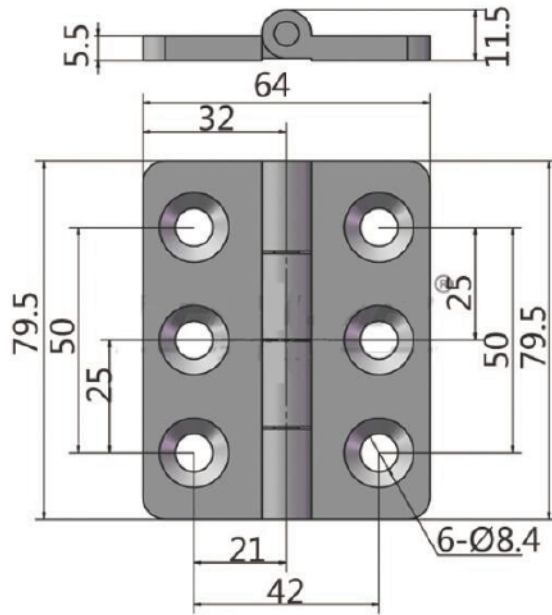
产品型号

Product model

KB221-5150

重型铰链

KBS6B系列



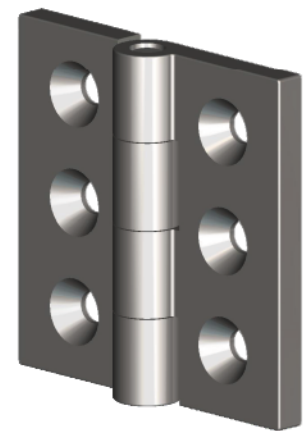
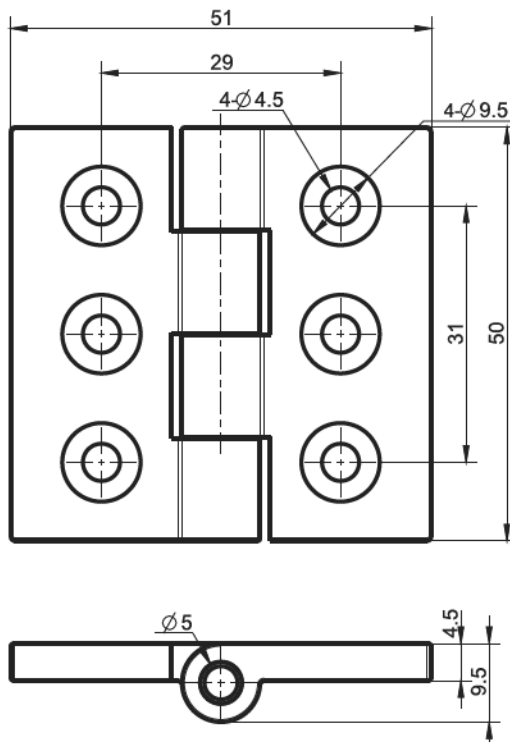
-材质及表面处理Material and treatment:
1.304镜面抛光 SUS304Mirror polishing:

不锈钢304
Stainless steel 304

KBS6B

平装不锈钢铰链

KB221-7系列



-材质及表面处理Material and treatment:
1.不锈钢铰链Stainless steel hinge

-最大静载荷参数Maximum static load parameters:
1.轴向载荷Axial load:2200N
2.径向载荷Radial load:2500N

产品型号
Product model

KB221-7150

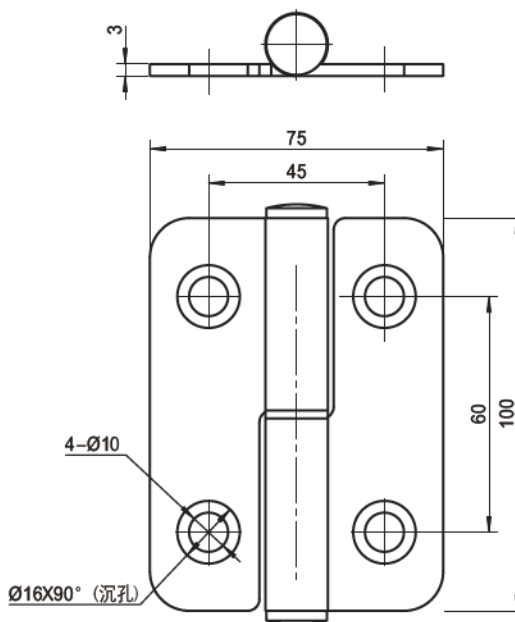
KB223-1系列

平装可拆卸铰链



-材质及表面处理Material and treatment:
1. 不锈钢铰链Stainless steel hinge

-最大静载荷参数Maximum static load parameters:
1. 轴向载荷Axial load:1100N
2. 径向载荷Radial load:680N



不锈钢铰链,右开门 Stainless steel hinge (RH)	不锈钢铰链,左开门 Stainless steel hinge (LH)
KB223-1150	KB223-1250

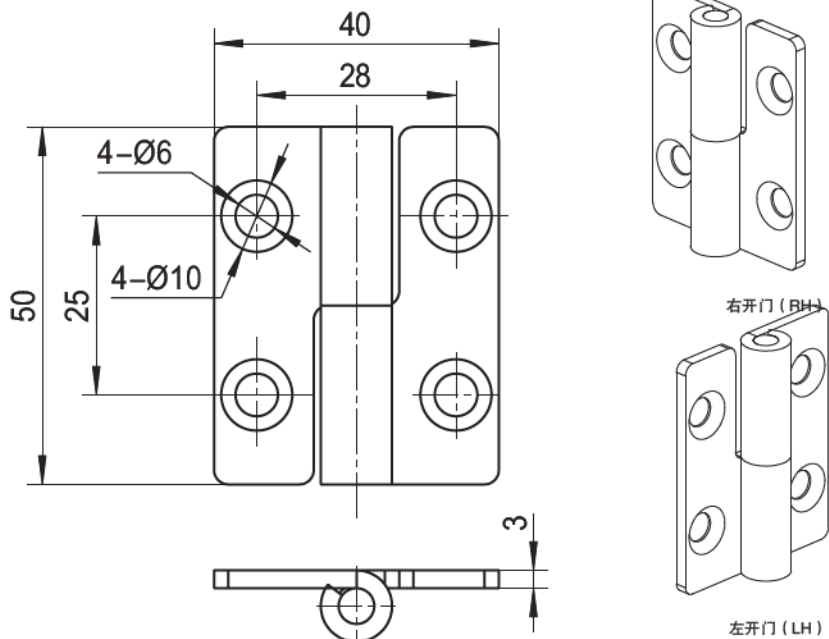
KB223-2系列

平装可拆卸铰链



-材质及表面处理Material and treatment:
1. 材质:碳钢镀铬,碳钢镀锌Material: carbon steel chrome plated, carbon steel galvanized

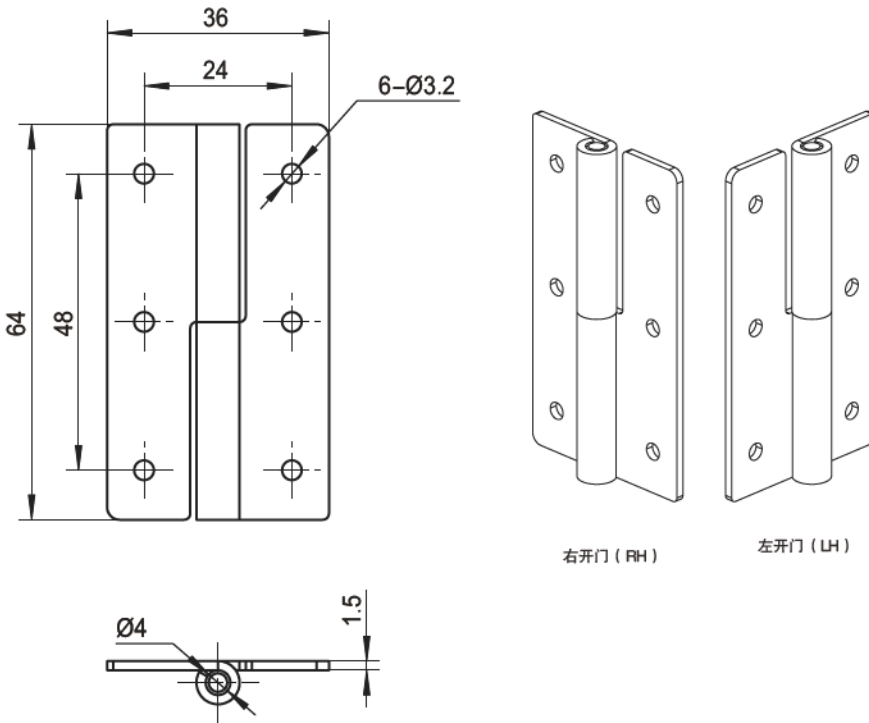
-最大静载荷参数Maximum static load parameters:
1. 轴向载荷Axial load:1200N
2. 径向载荷Radial load:800N



不锈钢铰链,右开门 Stainless steel hinge (RH)	不锈钢铰链,左开门 Stainless steel hinge (LH)
KB223-2150	KB223-2250

平装拆卸式铰链

KB223-3系列



右开门 (RH)

左开门 (LH)



-材质及表面处理Material and treatment:
1. 不锈钢铰链Stainless steel hinge

-最大静载荷参数Maximum static load parameters:
1. 轴向载荷Axial load: 600N
2. 径向载荷Radial load: 450N

不锈钢铰链, 右开门
Stainless steel hinge (RH)

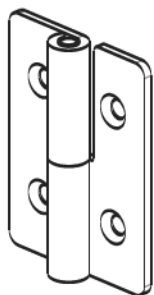
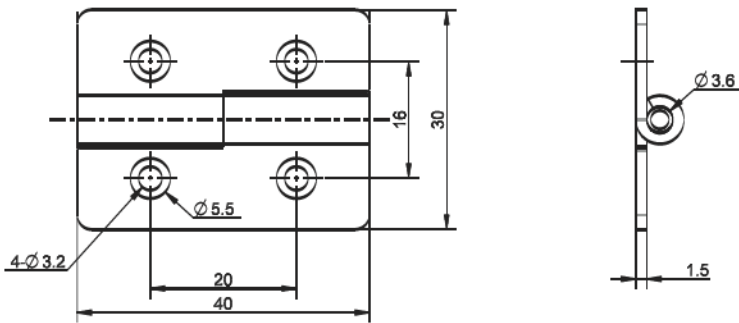
KB223-3150

不锈钢铰链, 左开门
Stainless steel hinge (LH)

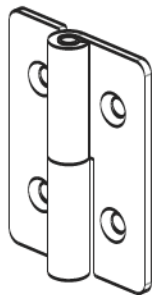
KB223-3250

平装可拆卸铰链

KB223-5系列



右开门/RH



左开门/LH



-材质及表面处理Material and treatment:
1. 不锈钢铰链Stainless steel hinge

-最大静载荷参数Maximum static load parameters:
1. 轴向载荷Axial load: 450N
2. 径向载荷Radial load: 300N

不锈钢铰链, 右开门
Stainless steel hinge (RH)

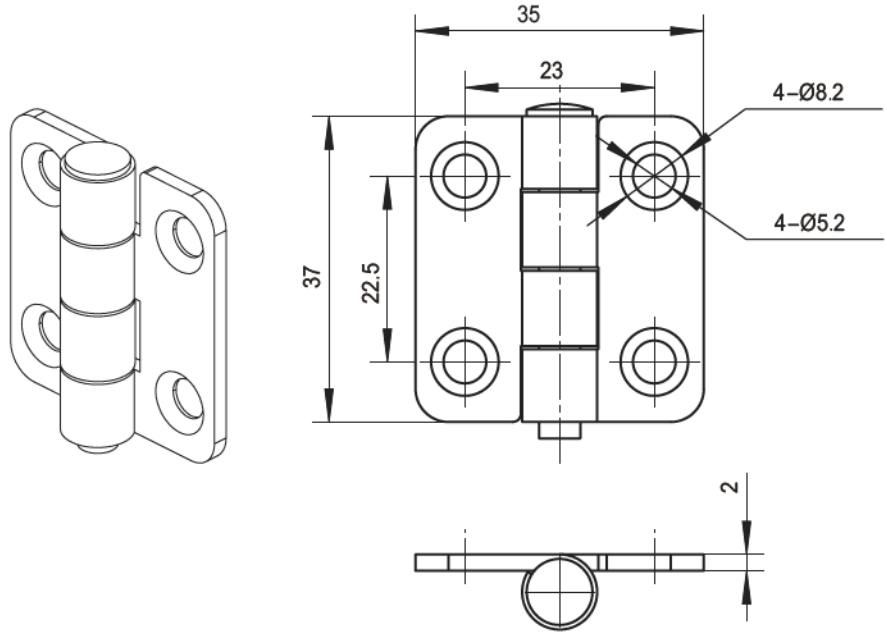
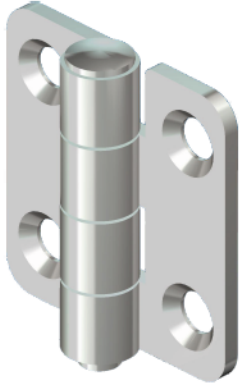
KB223-5150

不锈钢铰链, 左开门
Stainless steel hinge (LH)

KB223-5250

KB227-1系列

不锈钢平装铰链



-材质及表面处理Material and treatment:
1. 不锈钢铰链SUS304 Stainless steel hinge304

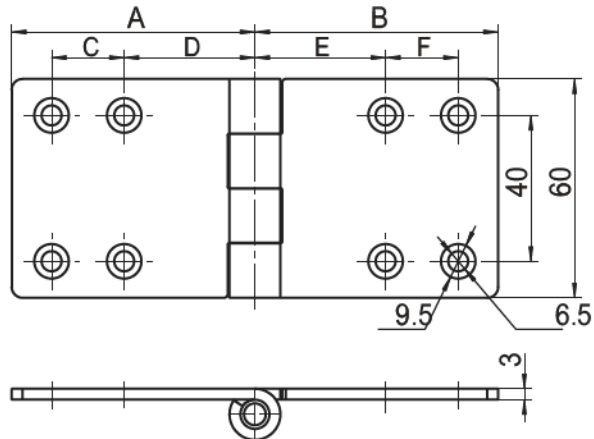
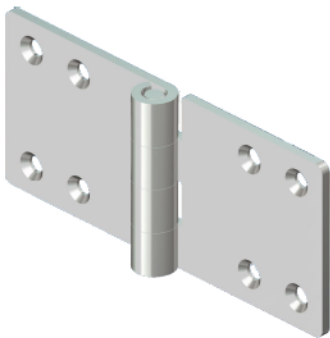
-最大静载荷参数Maximum static load parameters:
1. 轴向载荷Axial load:900N
2. 径向载荷Radial load:750N

不锈钢铰链
Stainless steel hinge

KB227-1150

KB227-3系列

不锈钢平装铰链



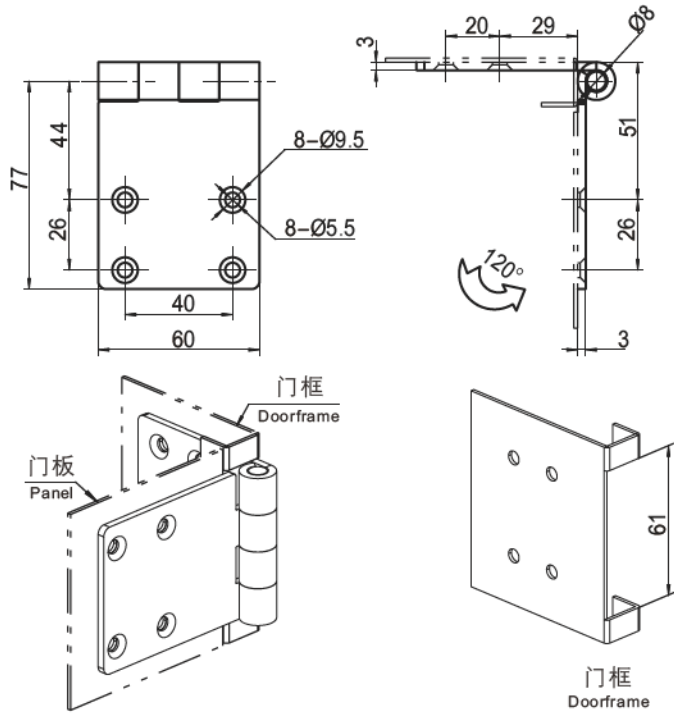
-材质及表面处理Material and treatment:
1. 黑色PA铰链Black PA hinge
2. 不锈钢销子Stainless steel pin

-最大静载荷参数Maximum static load parameters:
1. 轴向载荷Axial load:1100N
2. 径向载荷Radial load:890N

产品型号 Product code	A	B	C	D	E	F
KB227-3150	67	67	20	36	36	20
KB227-3250	77	77	26	44	44	26
KB227-3350	67	77	20	36	44	26

不锈钢平装铰链

KB227-3系列



铰链

-材质及表面处理Material and treatment:
1. 不锈钢铰链SUS304 Stainless steel hinge304
2. 不锈钢销子Stainless steel pin

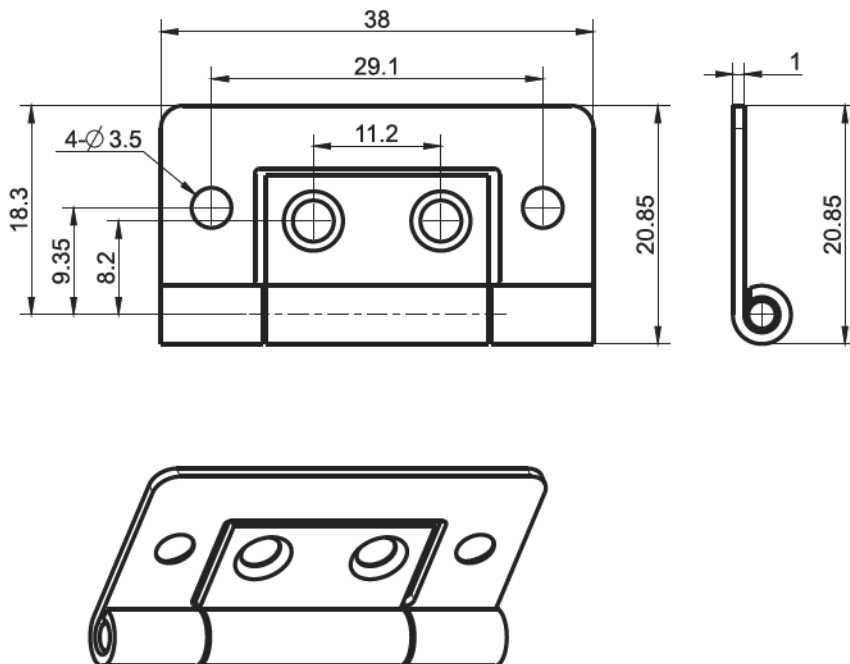
-最大静载荷参数Maximum static load parameters:
1. 轴向载荷Axial load:1100N
2. 径向载荷Radial load:890N

不锈钢304
Stainless steel 304

KB227-3450

内嵌式铰链

KB227-5系列



-材质及表面处理Material and treatment:
1. 镀锌钢铰链galvanized steel hinge

-最大静载荷参数Maximum static load parameters:
1. 轴向载荷Axial load:200N
2. 径向载荷Radial load:160N

产品型号
Product model

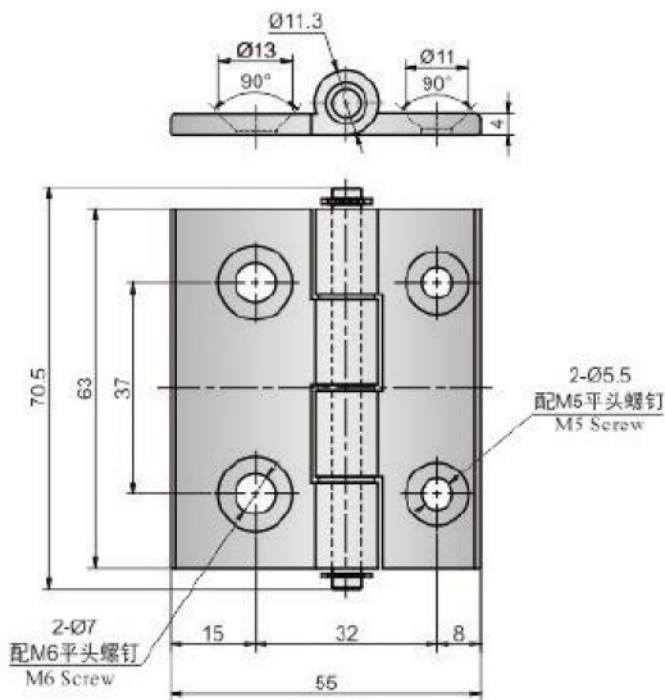
KB227-5145

KBY35系列



-材质及表面处理Material and treatment:
1. 铝合金材质aluminium alloy;

外露式铝合金铰链



铝合金
aluminium alloy

KBY35

KBS69系列



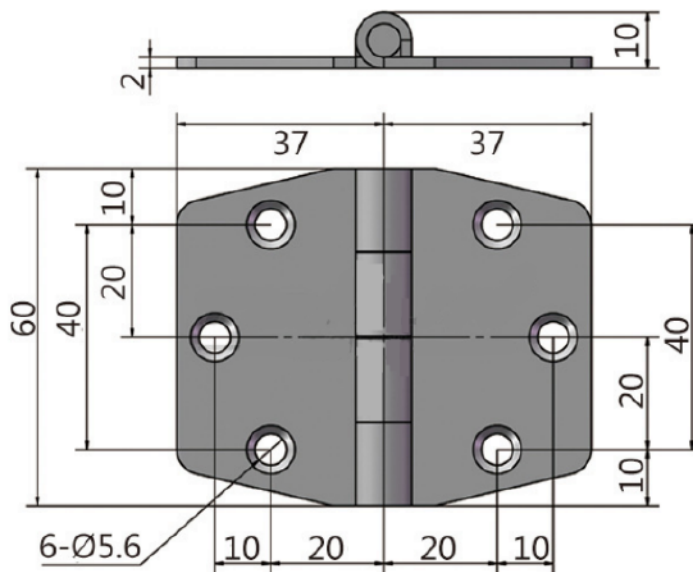
KBS69



KBS69B

-材质及表面处理Material and treatment:
1. 锌合金镀锌铰链Zinc alloy galvanized hinge;
2. 304镜面抛光 SUS304Mirror polishing;

重型铰链



锌合金
Zinc

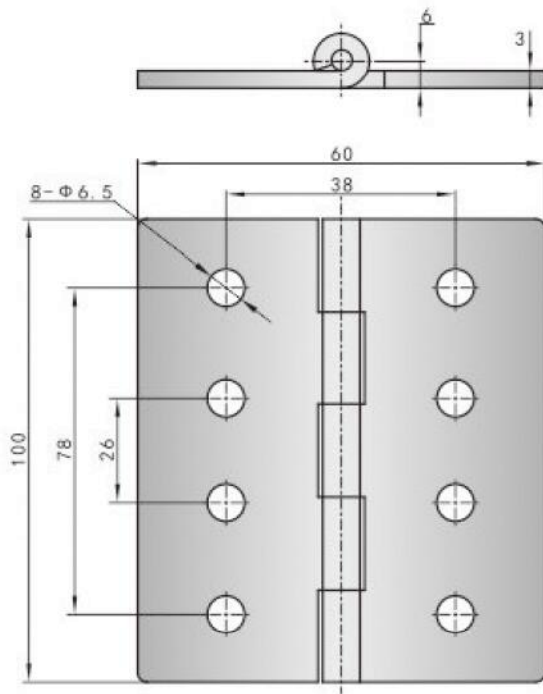
KBS69

不锈钢304
Stainless steel 304

KBS69B

不锈钢平面铰链

KBY72系列



铰链

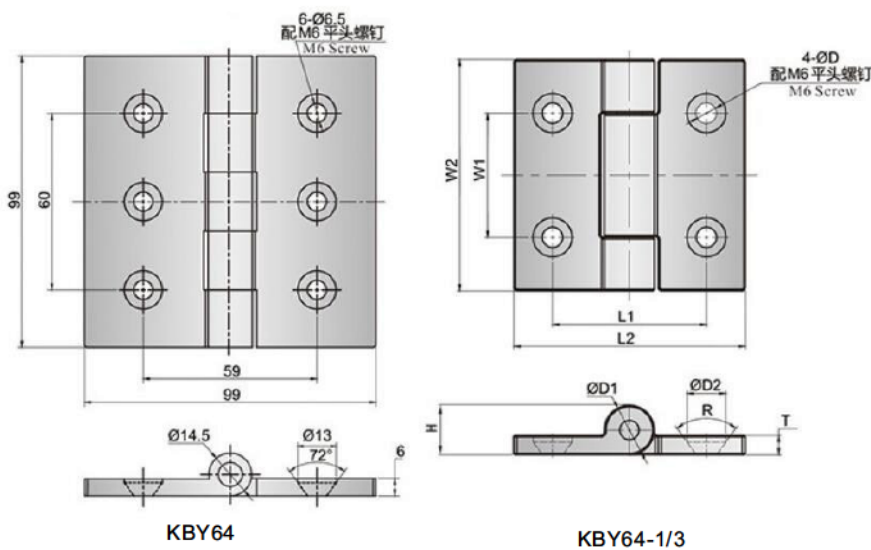
-材质及表面处理Material and treatment:
1. 不锈钢振动研磨 SUS304 Vibration grinding:

不锈钢304
stainless steel 304

KBY72

不锈钢平面铰链

KBY64系列



KBY64



KBY64-1
KBY64-2
KBY64-3

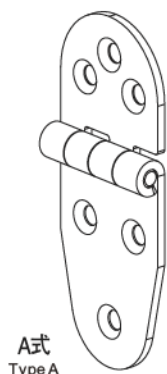
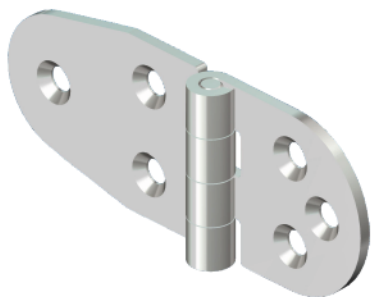
-材质及表面处理Material and treatment:
1. 304镜面抛光 SUS304 Mirror polishing:

产品型号 Product model	L1	L2	W1	W2	D	D1	D2	R	T	H
KBY64	请参见尺寸图 Please refer to the dimension drawing									
KBY64-1	49.5	74.5	4 ϕ	74.5	6.5	16	12.5	72°	6.3	16
KBY64-2	40	64	35	64.5	5.5	13.5	10.8	90°	5	14.5
KBY64-3	35	49.5	20	50	5.3	14	11.3	90°	5	14.3

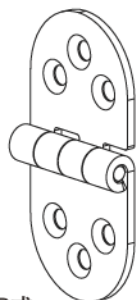
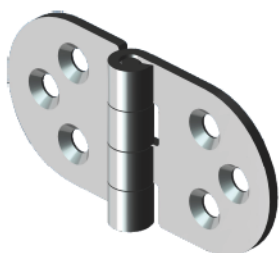
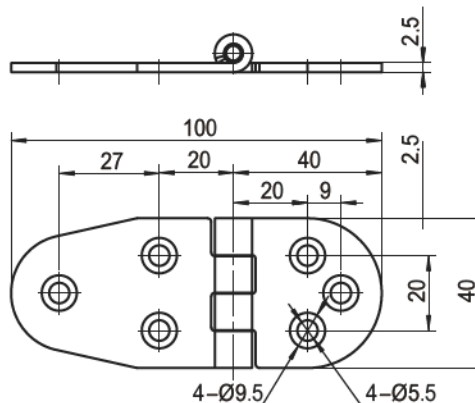
KB227-2系列

不锈钢平装铰链

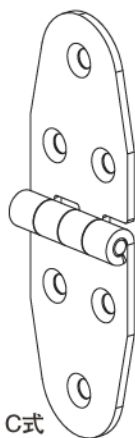
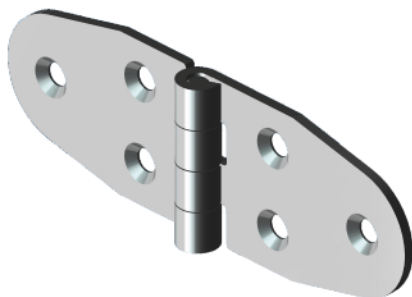
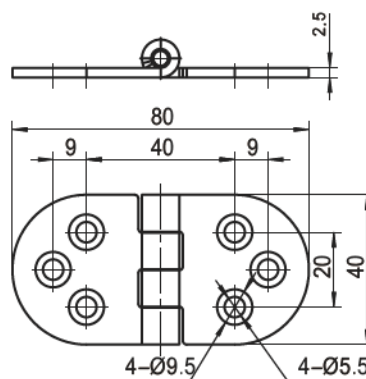
铰链



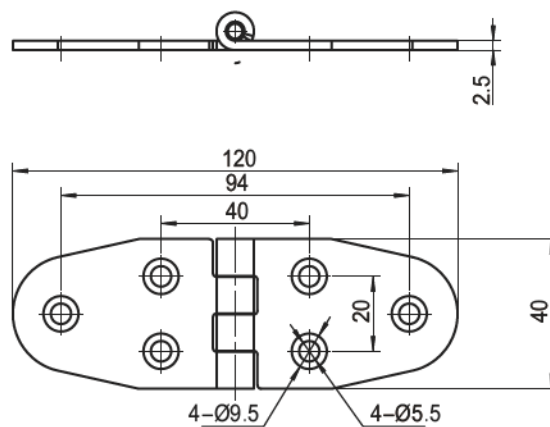
A式
Type A



B式
Type B



C式
Type C



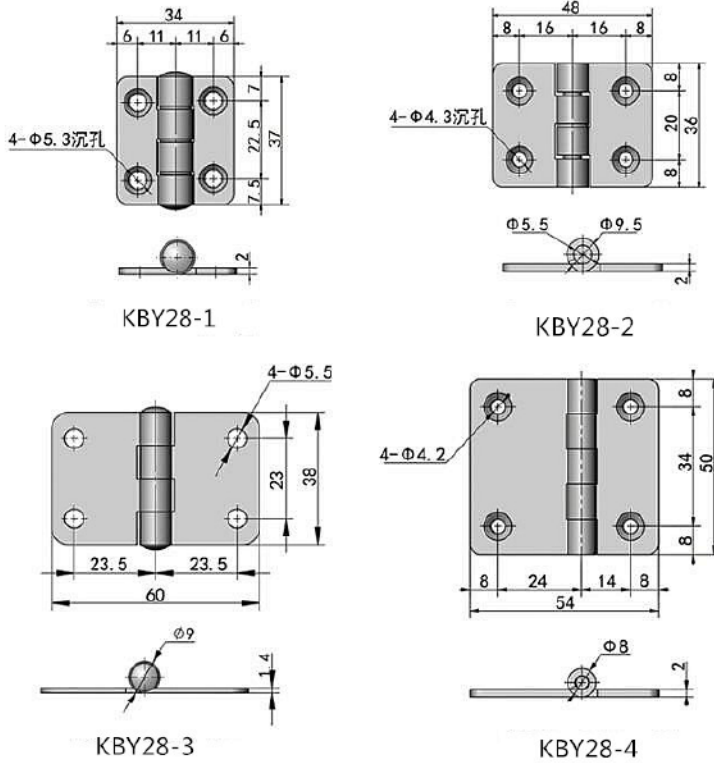
-材质及表面处理Material and treatment:
1. 不锈钢铰链Stainless steel hinge

-最大静载荷参数Maximum static load parameters:
1. 轴向载荷Axial load:650N
2. 径向载荷Radial load:560N

A式 Type A	B式 Type B	C式 Type C
KB227-2150	KB227-2250	KB227-2350

外露式铰链

KBY28系列



KBY28-1



KBY28-3



KBY28-2



KBY28-4

不锈钢304
stainless steel, SUS304

KBY28-1

KBY28-2

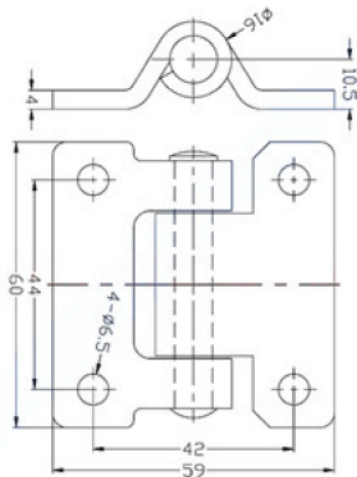
KBY28-3

KBY28-4

-材质及表面处理Material and treatment:
1.304振动研磨 SUS304Vibration grinding:

重型铰链

KBZ08/08S系列



-材质及表面处理Material and treatment:
1.碳钢镀锌Carbon steel galvanizing;
2.304镜面抛光 SUS304Mirror polishing:

碳钢
Carbon steel

KBZ08

不锈钢
stainless steel

KBZ08S

KBS58系列



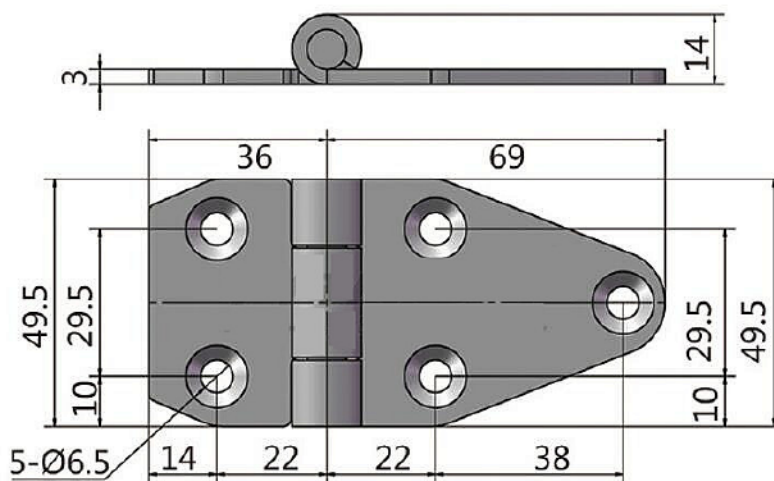
KBS58



KBS58B

-材质及表面处理Material and treatment:
 1. 锌合金镀锌铰链Zinc alloy galvanized hinge;
 2. 304镜面抛光 SUS304Mirror polishing;
 3. 开启角度270° Opening angle 270° :

重型铰链



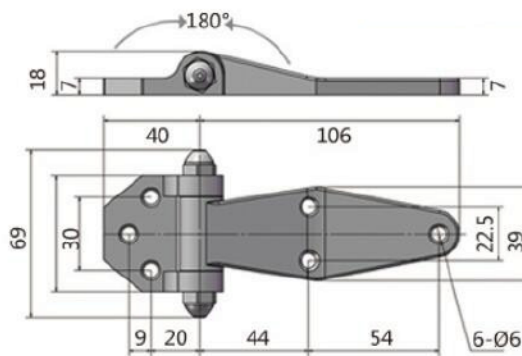
锌合金 Zinc	不锈钢304 Stainless steel 304
KBS58	KBS58B

KBS20系列

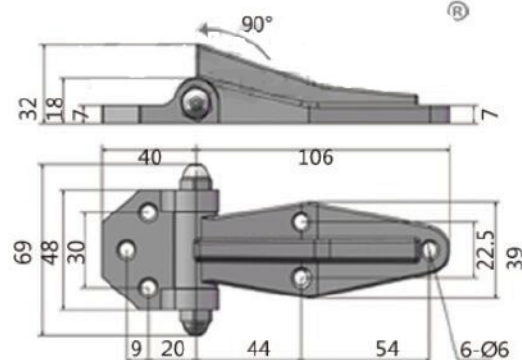


-材质及表面处理Material and treatment:
 1. 锌合金压铸镀铬铰链
 Zinc alloy die casting chrome plated hinge;
 2. 旋转角度270° Rotation angle 270° :

箱式柜门铰链



KBS20-1

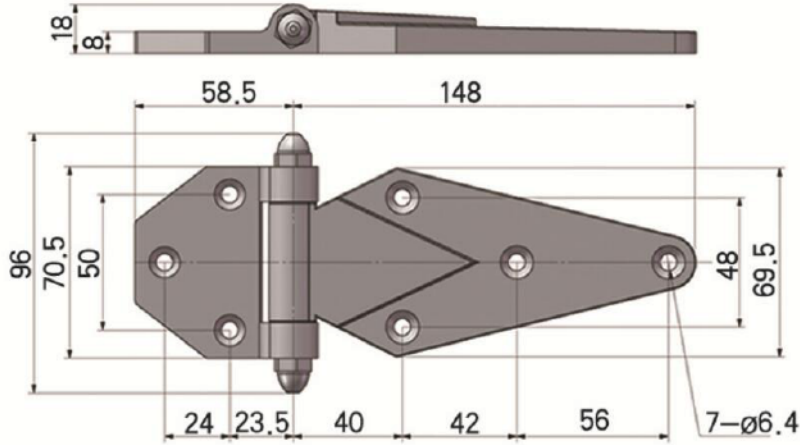


KBS20-2

锌合金 Zinc	
KBS20-1	KBS20-2

箱式柜门铰链

KBS19系列



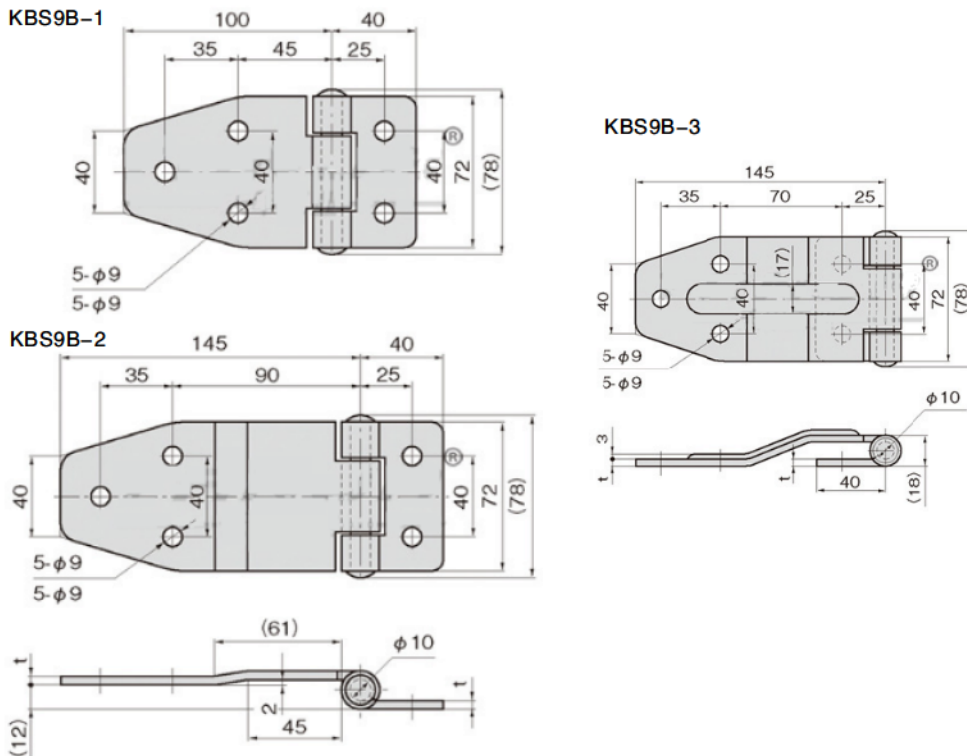
铰链

-材质及表面处理Material and treatment:
 1. 锌合金压铸镀铬铰链
 Zinc alloy die casting chrome plated hinge:
 2. 90° 直角安装, 开启角度180° :
 90° Right angle installation, opening angle 180° :

锌合金
Zinc
KBS19

箱式货车铰链

KBS9B系列



-材质及表面处理Material and treatment:
 1. 304镜面抛光 SUS304Mirror polishing:

不锈钢304
Stainless steel 304

KBS9B-1

KBS9B-2

KBS9B-3

KBY53系列

不锈钢箱式铰链

铰链



KBY53-1S

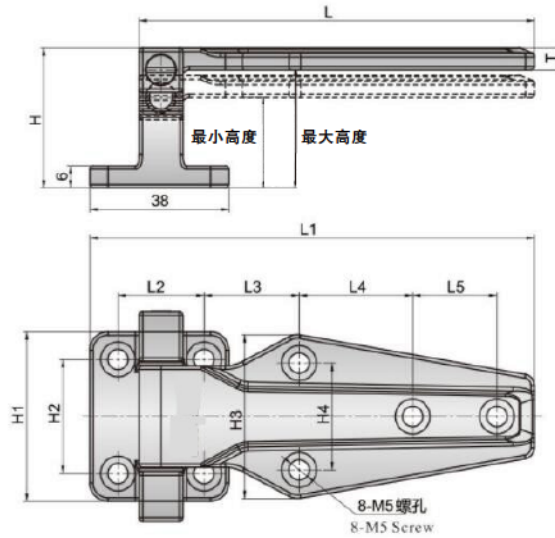


KBY53-6S



KBY53-7S

-材质及表面处理Material and treatment:
 1. 不锈钢拉丝抛光 SUS304
 Stainless steel wire drawing polishing SUS304:
 2. 凸门结构设计, 安装高度可选
 Convex door structure design, optional installation height:
 3. 开启角度180° Opening angle180° :



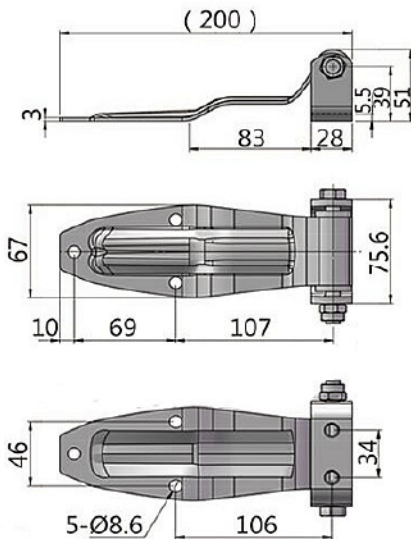
产品型号 Product code	H	H1	H2	H3	H4	L	L1	L2	L3	L4	L5	T	安装高度 Installation height
KBY53-1S	38	46	31	44.5	29	108	21.5	23.5	26	31	23	6	24.5-32
KBY53-6S	45.5	58	42	57	38.5	151	166	29	44	35	38	7.5	32-38
KBY53-7S	57.5	64	48	57	39	58	175	32	39.5	37.5	44	7.5	38-50

KBS88系列

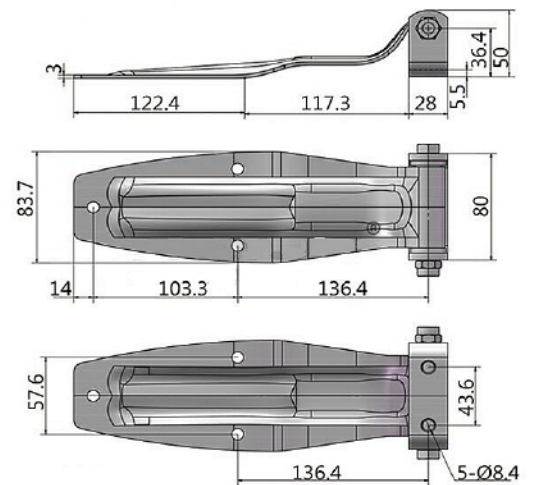
箱式铰链



KBS88-1/KBS88B-1



KBS88-2/KBS88B-2

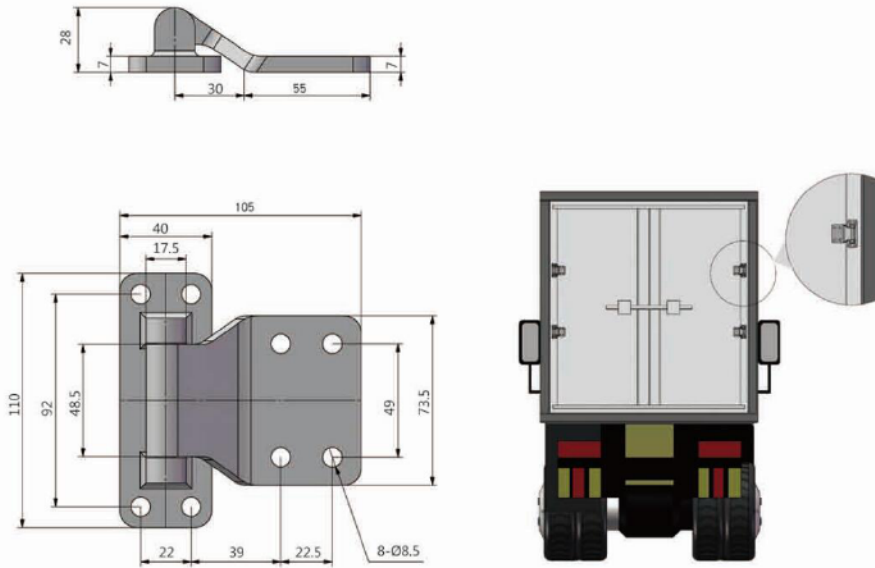


-材质及表面处理Material and treatment:
 1. 锌合金镀锌铰链Zinc alloy galvanized hinge:
 2. 304镜面抛光 SUS304Mirror polishing:

锌合金 Zinc	锌合金 Zinc	不锈钢304 Stainless steel 304	不锈钢304 Stainless steel 304
KBS88-1	KBS88-2	KBS88B-1	KBS88B-2

车厢重型铰链

KBS8B系列



-材质及表面处理Material and treatment:

1. 不锈钢304精密铸造Stainless steel 304 precision casting;
2. 侧边为坡度构造, 安全性能。

The side is of slope structure, with safety performance:

3. 表面处理拉丝, 开启角度180°

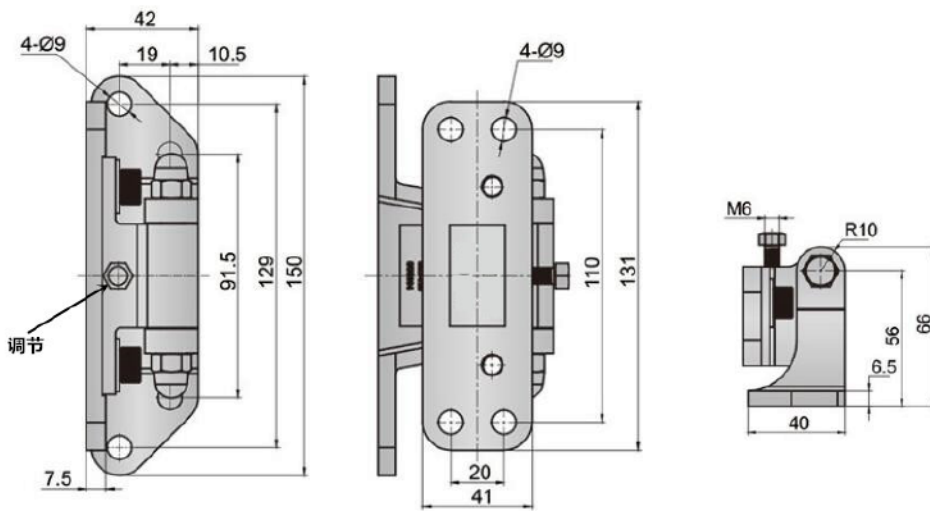
Surface treatment, wire drawing, Opening angle 180° :

不锈钢304
stainless steel, SUS304

KBS8B

不锈钢承重铰链

KBY20系列



-材质及表面处理Material and treatment:

1. 304镜面抛光 SUS304 Mirror polishing;

2. 门的安装部位可以调节, 适合不同的密封厚度

The installation position of the door can be adjusted to suit different sealing thickness:

3. 左右兼用型 Both left and right;

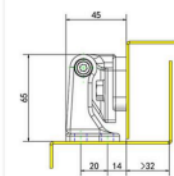
4. 双只承重150kg Double bearing 150kg;

不锈钢304
stainless steel, SUS304

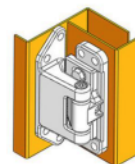
KBY20



安装尺寸参照图



安装图

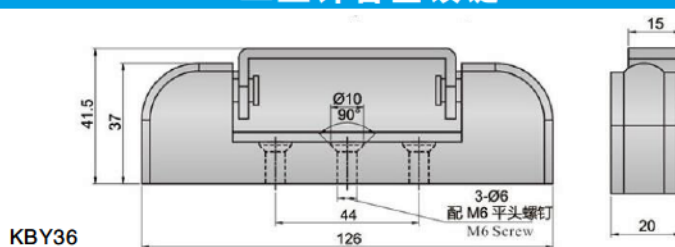


KBY36系列

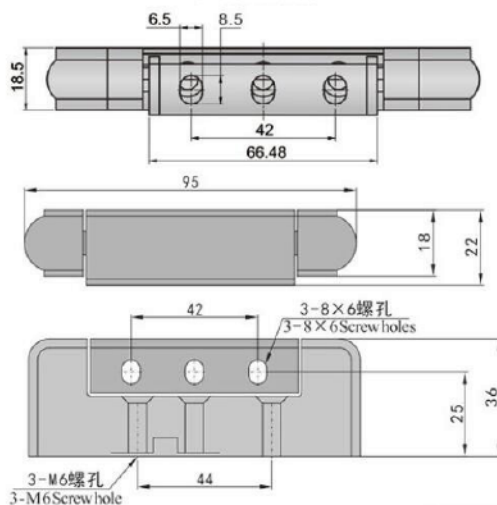
工业锌合金铰链



- 材质及表面处理Material and treatment:
 1. 锌合金镀锌铰链Zinc alloy galvanized hinge:
 2. 最大开启角度180° Maximum opening angle:
 3. 凸门结构设计, 铰和安装于凸门的箱体
 Convex door structure design, and the box installed on the convex door:
 4. 带铰链盖, 安装后无安装痕迹With hinged cover, there is no trace of installation after installation:



KBY36



KBY36B

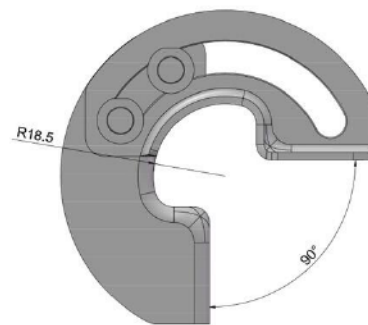
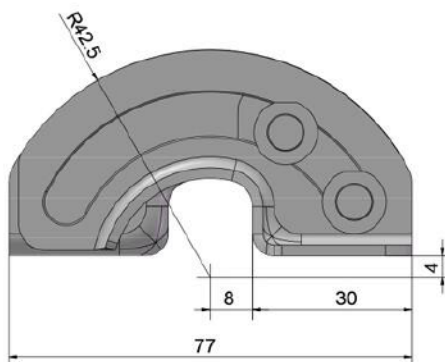
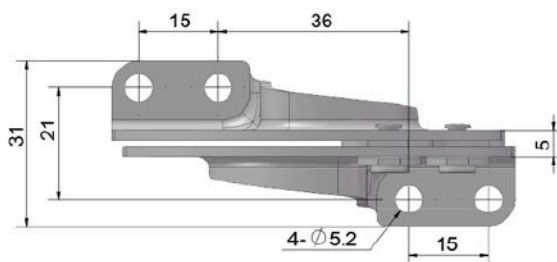
锌合金 Zinc	锌合金 Zinc
KBY36	KBY36B

KBS205/205S系列

隐藏式滑动90度铰链



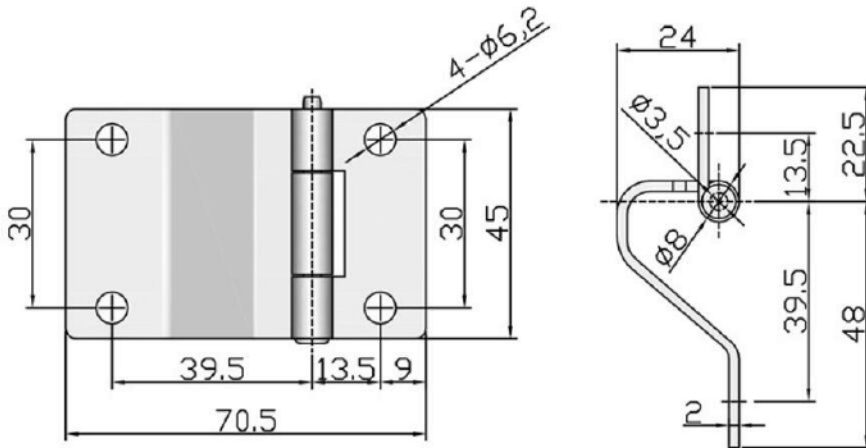
- 材质及表面处理Material and treatment:
 1. 碳钢镀锌铰链Carbon steel galvanized hinge:
 2. 304振动抛光 304 vibration polishing:



碳钢镀锌 Carbon steel galvanizing	不锈钢304 Stainless steel 304
KBS205	KBS205S

隐藏式铰链

KBY39系列



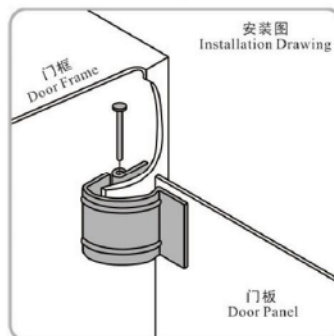
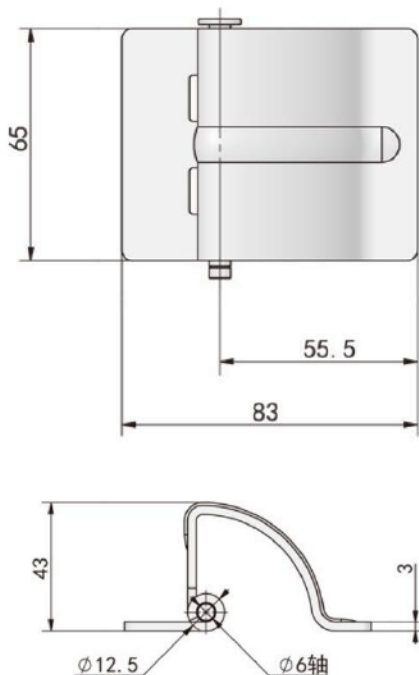
铰链

-材质及表面处理Material and treatment:
 1. 铁本色镀锌铰链 Nickel plated iron hinge:
 2. 304镜面抛光 SUS304Mirror polishing:
 3. 无孔型号为焊接安装
 The model without hole is welded installation:
 4. 左右兼用型 Both left and right:

铁(无孔) SPCC	铁(带孔) SPCC	不锈钢304 (无孔) Stainless steel 304	不锈钢304(带孔) Stainless steel 304
KBY39A	KBY39AK	KBY39S-1	KBY39S

隐藏式铰链

KBY39-1系列



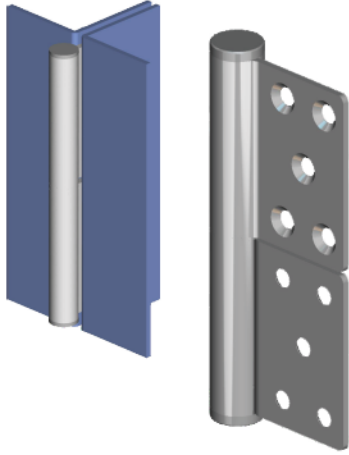
-材质及表面处理Material and treatment:
 1. 304镜面抛光 SUS304Mirror polishing:
 2. 无孔型号为焊接安装
 The model without hole is welded installation:

不锈钢304 stainless steel,SUS304
KBY39-1

KB228-1系列

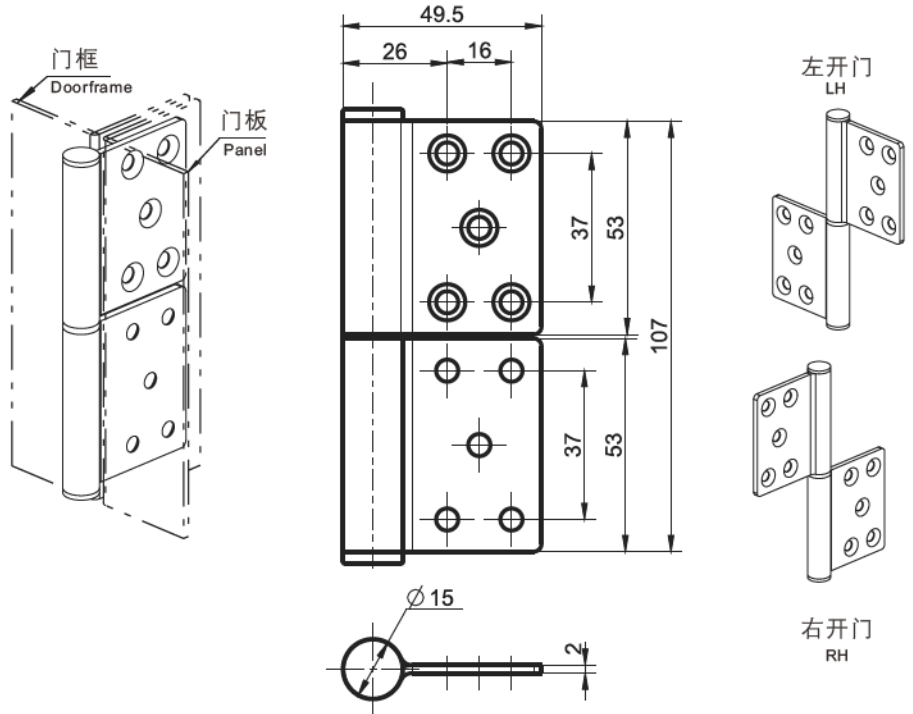
不锈钢内嵌可拆卸铰链

铰链



-材质及表面处理Material and treatment:
1. 不锈钢铰链Stainless steel hinge

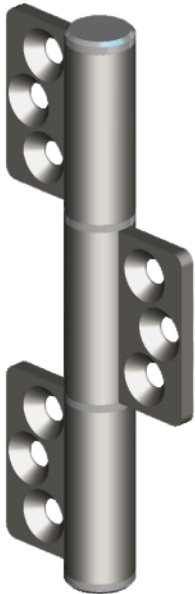
-最大静载荷参数Maximum static load parameters:
1. 轴向载荷Axial load:1100N
2. 径向载荷Radial load:900N



右开门 RH	左开门 LH
KB228-1150-R	KB228-1150-L

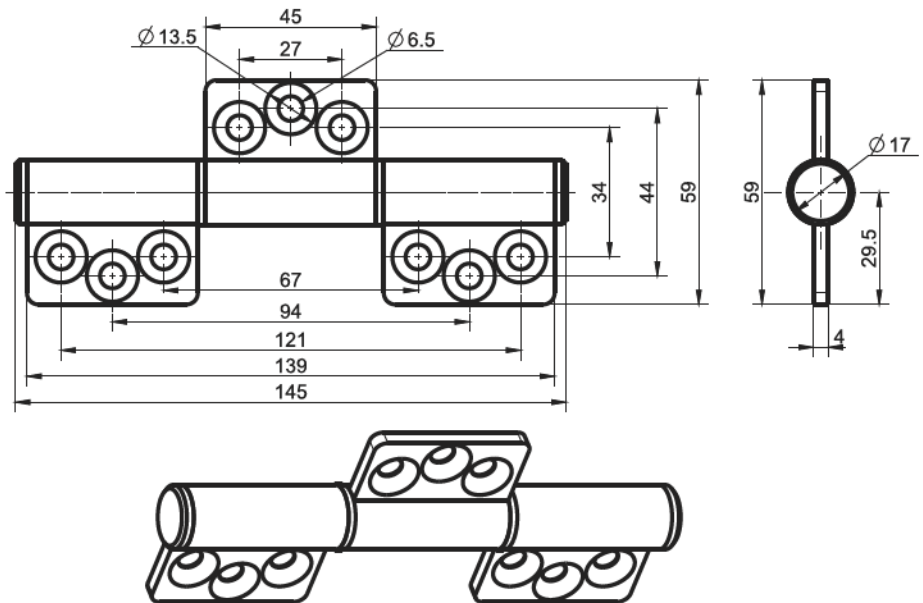
KB228-31系列

不锈钢内嵌式重型铰链



-材质及表面处理Material and treatment:
1. 不锈钢铰链Stainless steel hinge

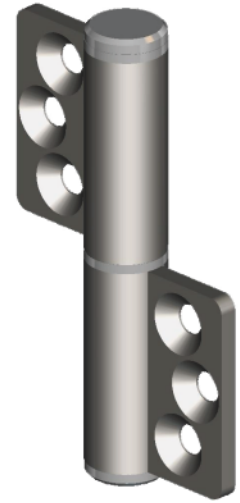
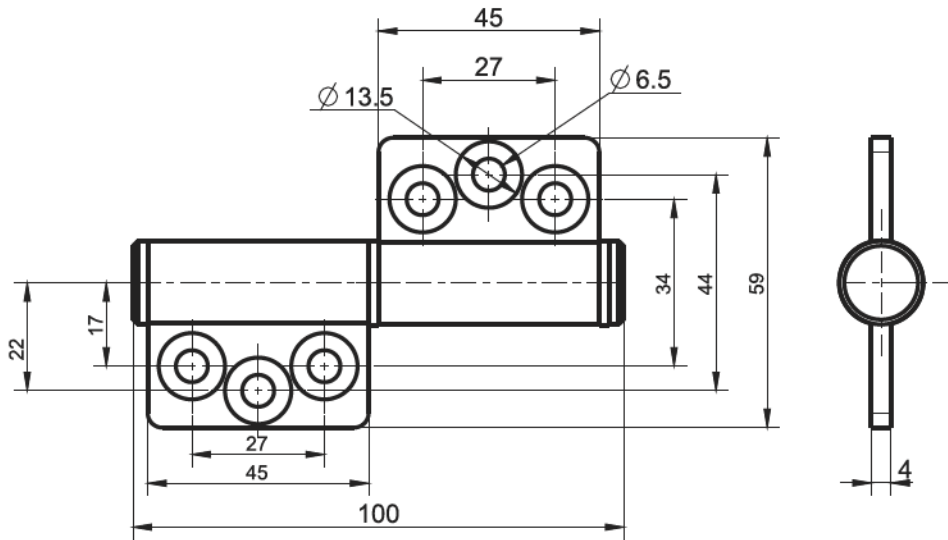
-最大静载荷参数Maximum static load parameters:
1. 轴向载荷Axial load:3000N
2. 径向载荷Radial load:2850N



产品型号 Product model
KB228-3150

不锈钢内嵌式可拆卸铰链

KB228-32/33系列



铰链

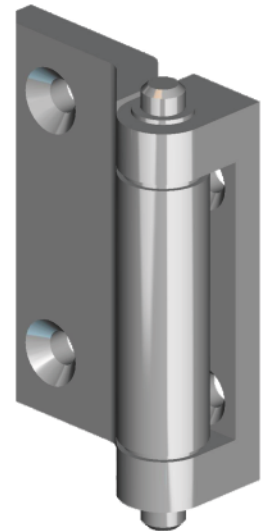
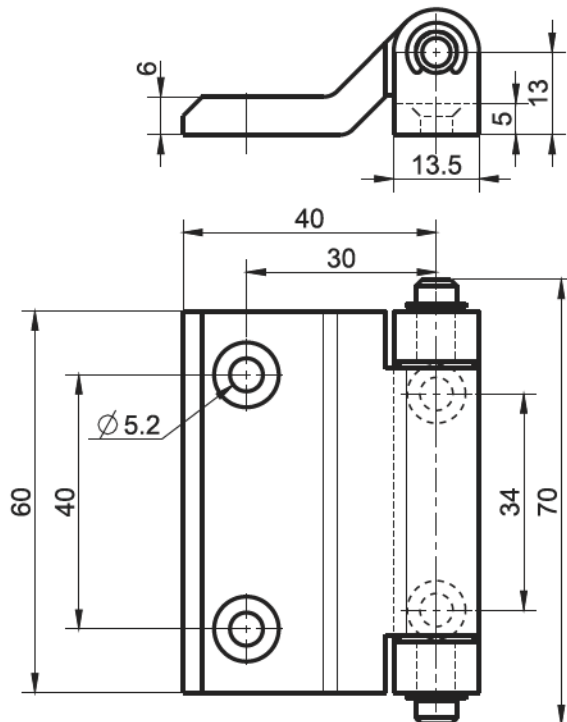
-材质及表面处理Material and treatment:
1. 不锈钢铰链Stainless steel hinge

-最大静载荷参数Maximum static load parameters:
1. 轴向载荷Axial load:2300N
2. 径向载荷Radial load:1500N

右开门 RH	左开门 LH
KB228-3250	KB228-3350

外露式180° 螺钉固定铰链

KB230-1系列



-材质及表面处理Material and treatment:
1. 不锈钢铰链Stainless steel hinge

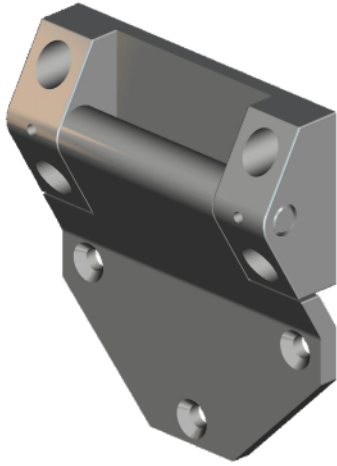
-最大静载荷参数Maximum static load parameters:
1. 轴向载荷Axial load:2300N
2. 径向载荷Radial load:2450N

产品型号 Product model
KB230-1150

KA230-2系列

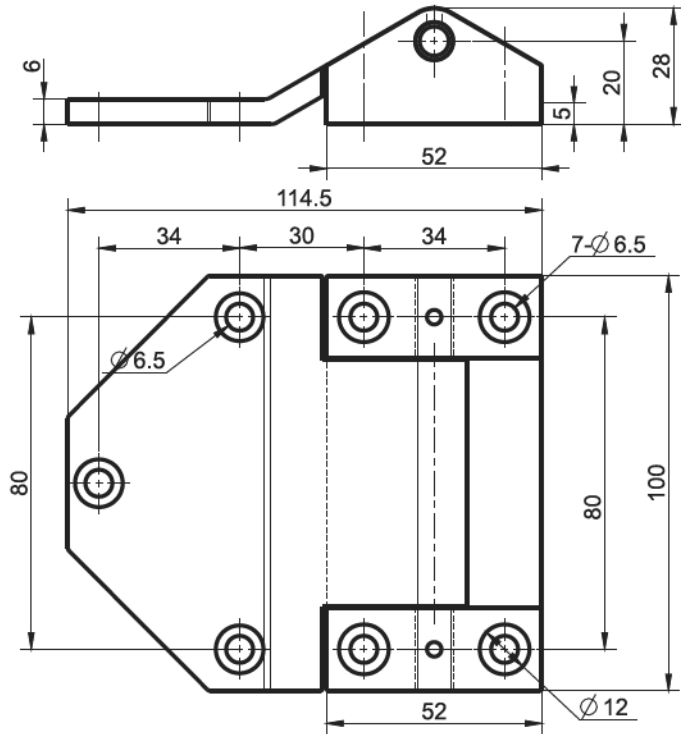
平装不锈钢铰链

铰链



-材质及表面处理Material and treatment:
1. 不锈钢铰链Stainless steel hinge

-最大静载荷参数Maximum static load parameters:
1. 轴向载荷Axial load:3500N
2. 径向载荷Radial load:3200N



产品型号
Product code

KB230-2150

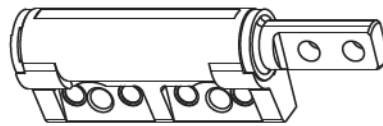
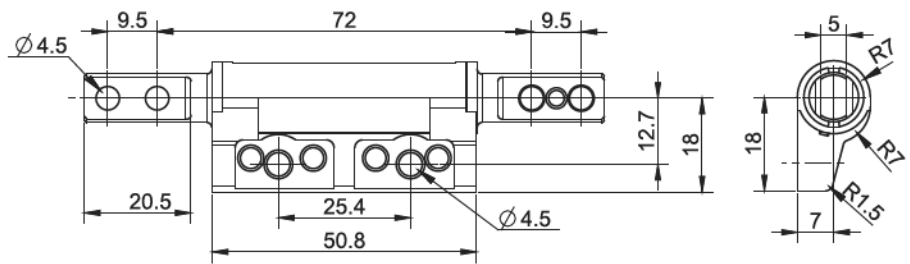
KB229-1/2/3/4系列

锌合金扭矩铰链

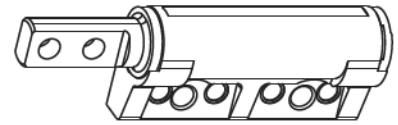


-材质及表面处理Material and treatment:
1. 锌合金本色铰链Zinc alloy natural color hinge

-最大静载荷参数Maximum static load parameters:
1. 轴向载荷Axial load:450N
2. 径向载荷Radial load:350N



左开门/left open

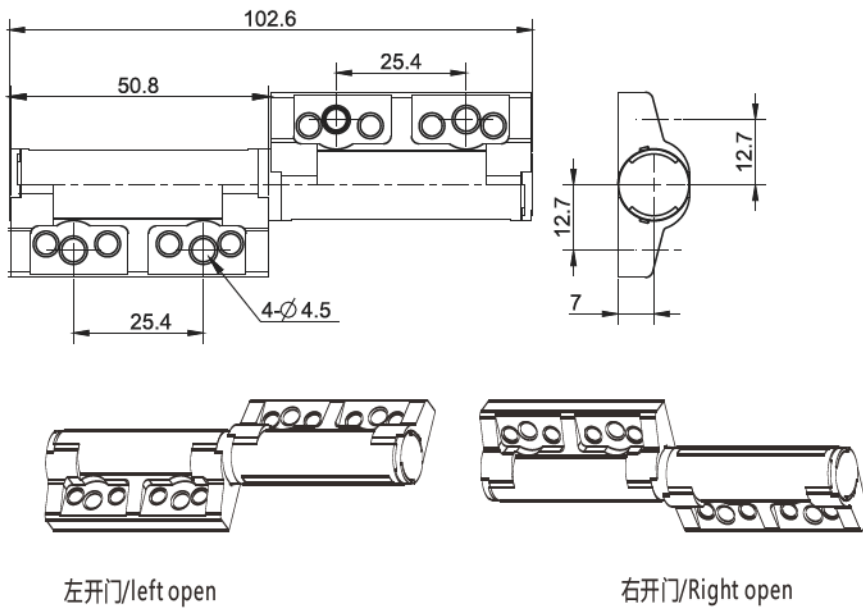


右开门/Right open

单轴对称扭矩 Single shaft, symmetrical torque		单轴不对称扭矩 Single shaft asymmetric torque		双轴对称扭矩 Biaxial symmetrical torque	双轴不对称扭矩 Biaxial asymmetric torque
右开门/Right open	左开门/Left Open	右开门/Right open	左开门/Left Open		
KB229-1110-R	KB229-1110-L	KB229-2110-R	KB229-2110-L	KB229-3110	KB229-4110

锌合金扭矩铰链

KB229-7/8系列



铰链

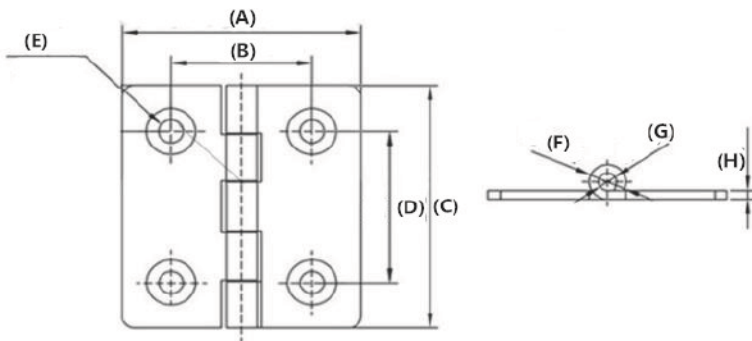
-材质及表面处理Material and treatment:
1. 锌合金本色铰链Zinc alloy natural color hinge

-最大静载荷参数Maximum static load parameters:
1. 轴向载荷Axial load:900N
2. 径向载荷Radial load:300N

双体对称扭矩 Two body symmetrical torque		双体不对称扭矩 Two body asymmetric torque	
右开门/left open	右开门/left open	右开门/left open	右开门/left open
KB229-7110-R	KB229-7110-L	KB229-8110-R	KB229-8110-L

阻尼铰链

KBZ系列



-材质及表面处理Material and treatment:
1. 铁镀镍铰链Iron nickel plating hinge
2. 304镜面抛光 SUS304Mirror polishing:

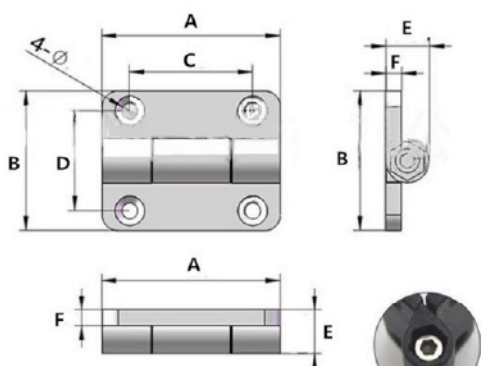
型号	材质	A	B	C	D	E	F	G	H	阻尼
KBZ626	铁镀镍	26	16.5	26	18	φ4	φ6	φ3	1.6	0.2NM/0.5NM/1.0NM
KBZ626S	304 不锈钢	26	16	26	18	φ4	φ6.8	φ3.8	1.5	0.3NM/0.8NM
KBZ225	304 不锈钢	32	22	25	13	φ3.5	φ6	φ3	1.5	0.2NM/0.8NM
KBZ040	304 不锈钢	40	27	40	25	φ5.2	φ10	φ5	2	0.3NM/1.4NM
KBZ044	304 不锈钢	44	27.5	50	34	φ4	φ8.4	φ4.5	2	0.7NM/1.5NM/2NM

KBZ5系列

工业塑料,锌合金阻尼铰链



-材质及表面处理Material and treatment:
1. 塑料 Plastic:
2. 锌合金喷涂黑, 银 Zinc alloy spraying black, silver:



使用六角扳手调节

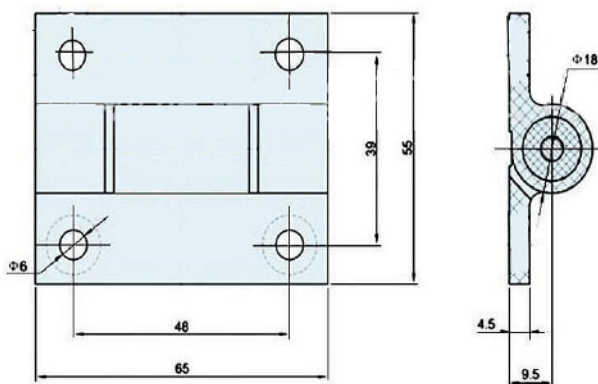
型号	材质	表面处理	A	B	C	D	E	F	G	重量(g)	阻尼(N.m)
KBZ526	塑料	黑/白	26	20	18	14.5	6.5	2	4	2.1	0-0.1
KBZ526 XW	锌合金	电镀黑/银	26	20	18	14.5	6.5	2	4	10	0-0.2
KBZ536	塑料	黑/白	36	28	25	20	9	3	3	6.8	0.1-0.3
KBZ536 XW	锌合金	电镀黑/银	36	28	25	20	9	3	3	22	0.3-0.7
KBZ545	塑料	黑/白	45	35	31	25	11	4	4	12.5	0.1-0.8
KBZ545 XW	锌合金	电镀黑/银	45	35	31	25	11	4	4	44	0.3-1.2
KBZ554	塑料	黑/白	54	42	37	30	11	4	5	22	0.1-0.8
KBZ554 XW	锌合金	电镀黑/银	54	42	37	30	11	4	5	56	0.3-2
KBZ572	塑料	黑/白	72	56	48	38	19	6	6.5	45	0.1-1.5

KBZ5系列

工业铝,锌合金阻尼铰链



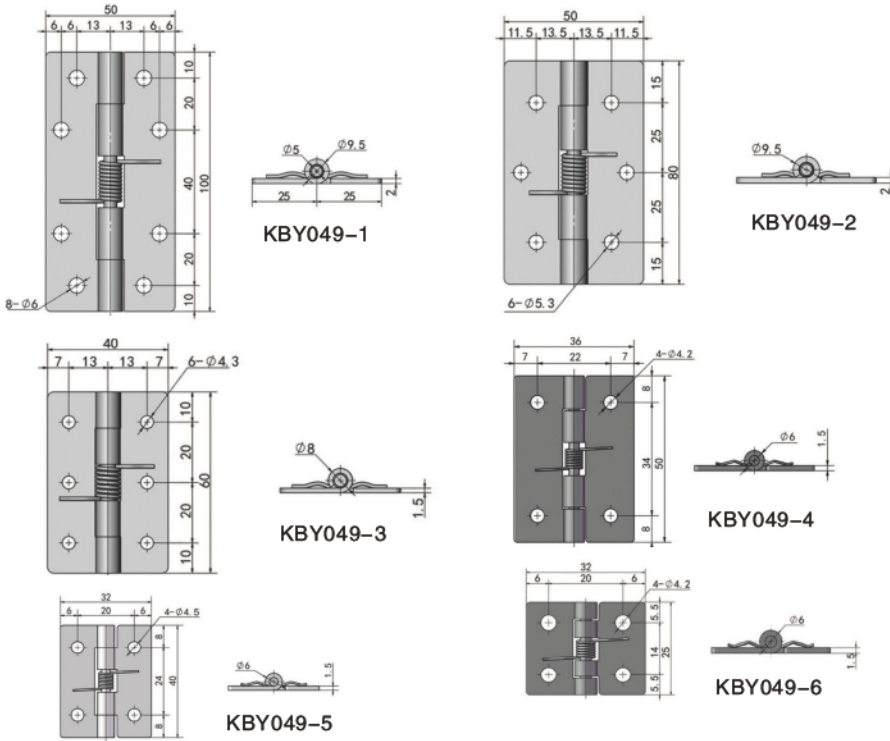
-材质及表面处理Material and treatment:
1. 铝本色 Aluminum natural color:
2. 锌合金喷涂黑, 金, 亚光
Zinc alloy spraying black, gold, matte:



名称	铝本色	锌合金亚光	锌合金镀铬	锌合金黑色
型号	KBZ506	KBZ506YW	KBZ506SW	KBZ506B
扭力	0-2.5N.m			

不锈钢弹簧铰链

KBY049系列



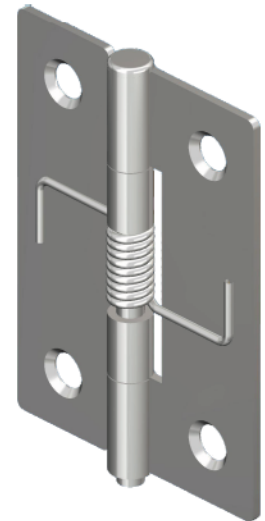
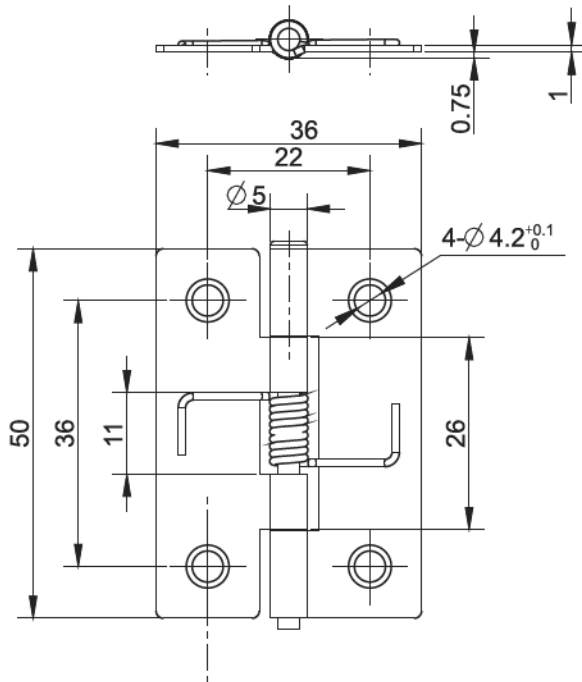
-材质及表面处理Material and treatment:
1.304振动研磨Vibration grinding of stainless steel:

不锈钢304
Stainless steel 304

KBY049-1	KBY049-2	KBY049-3	KBY049-4	KBY049-5	KBY049-6
----------	----------	----------	----------	----------	----------

不锈钢平装扭簧铰链

KB221-6系列



-材质及表面处理Material and treatment:
1.不锈钢铰链Stainless steel hinge

-最大静载荷参数Maximum static load parameters:
1.轴向载荷Axial load:500N
2.径向载荷Radial load:450N

产品型号
Product model

KB221-6150

铰链

KB233-1系列



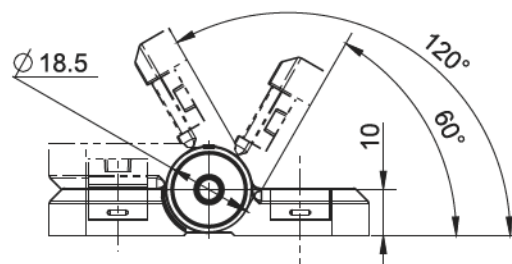
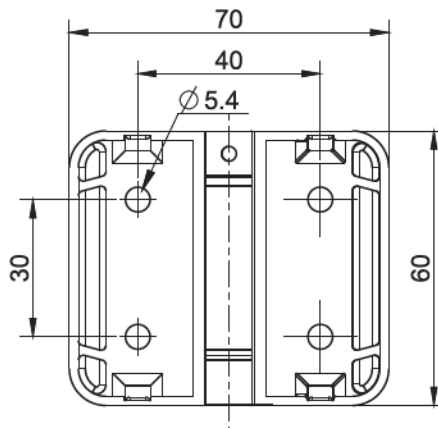
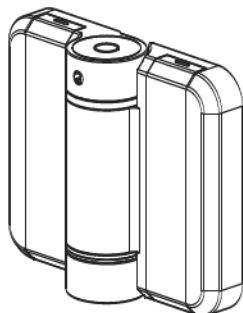
-材质及表面处理Material and treatment:

1. 锌合金镀铬铰链顶 Zinc alloy Matt chromed hinge seat
2. 拉丝不锈钢盖板 Brushed stainless steel cover
3. 不锈钢销子 Stainless steel pin

-最大静载参数 Maximum static load parameters:

1. 轴向载荷 Axial load: 550N
2. 径向载荷 Radial load: 400N
3. 定位扭矩 Locate torque: 0.5N.m

平装定位阻尼铰链



无定位功能
No positioning function
KB233-1018

带定位功能
With positioning function
KB233-1118

KB233-2系列



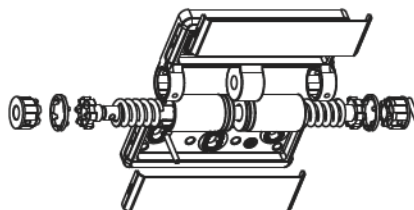
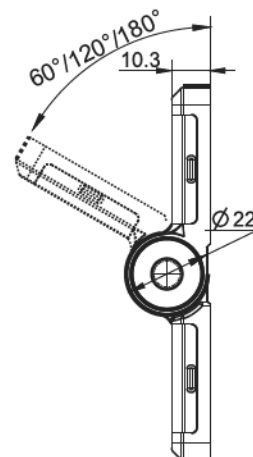
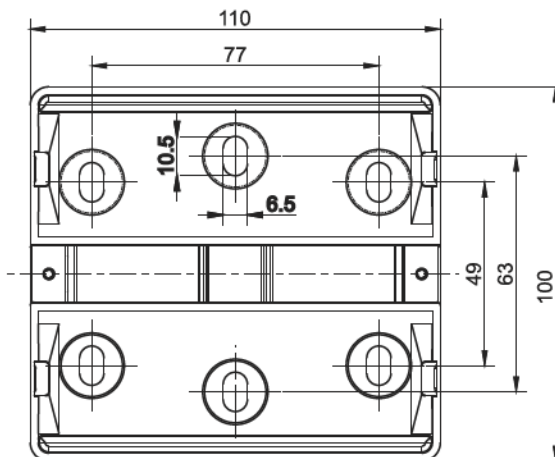
-材质及表面处理Material and treatment:

1. 锌合金镀铬铰链顶 Zinc alloy Matt chromed hinge seat
2. 拉丝不锈钢盖板 Brushed stainless steel cover
3. 不锈钢销子 Stainless steel pin

-最大静载参数 Maximum static load parameters:

1. 轴向载荷 Axial load: 1050N
2. 径向载荷 Radial load: 900N
3. 单弹簧定位扭矩 Locate torque: 1.2N.m
双弹簧定位扭矩 Locate torque: 2.5N.m

平装定位铰链

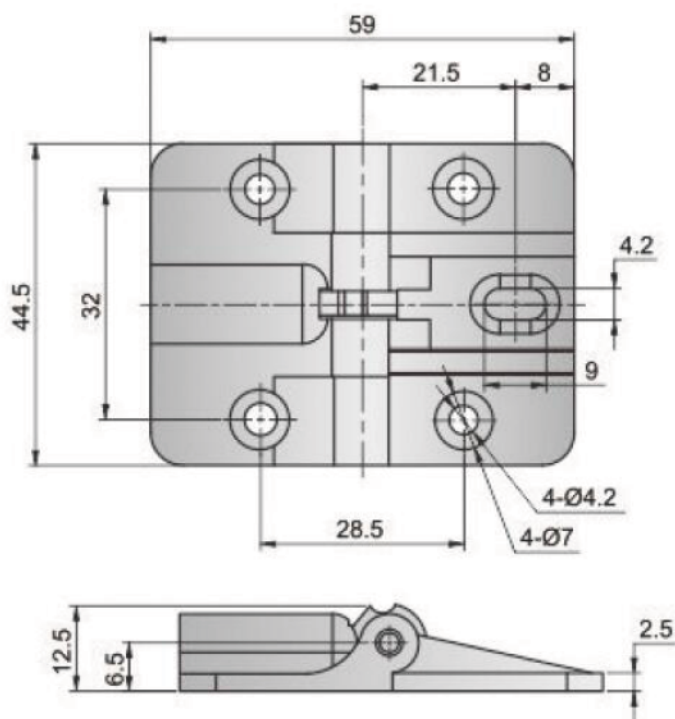


无定位功能
No positioning function
KB233-2018

单弹簧定位
Single spring positioning
KB233-2118

双弹簧定位
Double spring positioning
KB233-2218

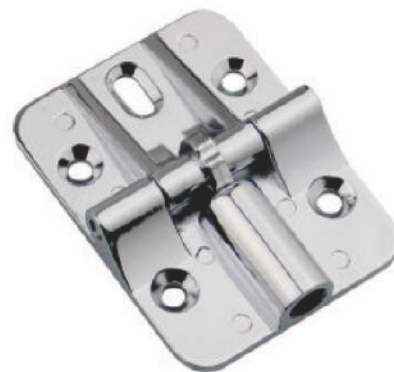
限位铰链



锌合金
Zinc

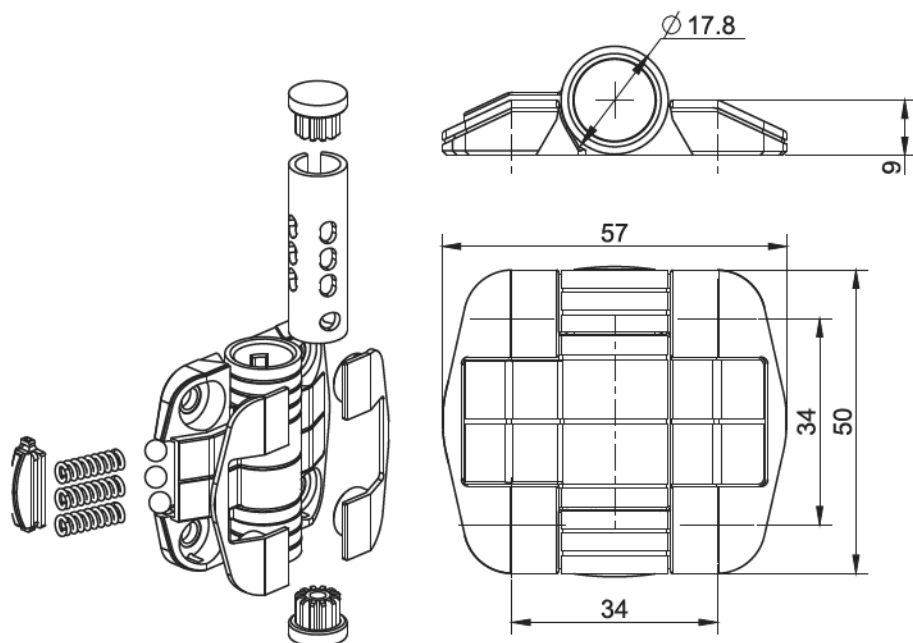
KBY07-1

KBY07-1系列



-材质及表面处理Material and treatment:
1. 锌合金镀铬铰链Zinc alloy chrome plated hinge;
2. 具有阻尼功能, 可90°或180°进行限位:
With damping function, 90° or 180° CAN BE LIMITED;
3. 结构设计合理, 可很好地定位和规定角度:
Structure Design is reasonable, can be well positioned and specified angle:

平装PO定位铰链



KB233-3系列



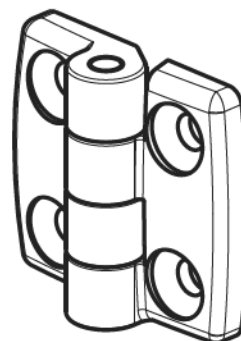
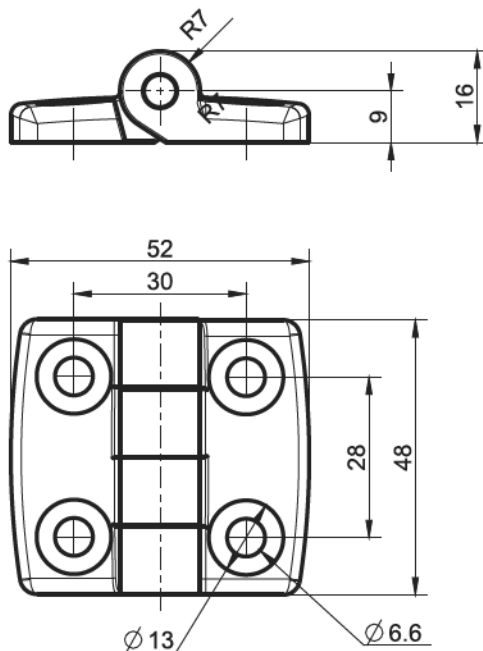
-材质及表面处理Material and treatment:
1. POM铰链座POM hinge-seat
2. 不锈钢轴套, stainless steel sleeve

-最大静载荷参数Maximum static load parameters:
1. 轴向载荷Axial load:300N
2. 径向载荷Radial load:300N

功能说明 Functional specifications	80° 定位 80° positioning	115° 定位 115° positioning	150° 定位 150° positioning
自由角度/Free angle	KB233-3080		
扭矩:0.7N.m/Torque: 0.7 N.m	KB233-3180	KB233-3480	KB233-3780
扭矩:1.1N.m/Torque: 1.1N.m	KB233-3280	KB233-3580	KB233-3880
扭矩:1.7N.m/Torque: 1.7 N.m	KB233-3380	KB233-3680	KB233-3980

KB238-1系列

平装PA铰链



-材质及表面处理Material and treatment:

- 1.黑色PA铰链BlackPA hinge
- 2.不锈钢销子Stainless steel pin

-最大静载荷参数Maximum static load parameters:

- 1.轴向载荷Axial load:400N
- 2.径向载荷Radial load:280N

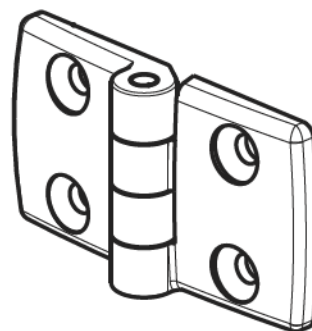
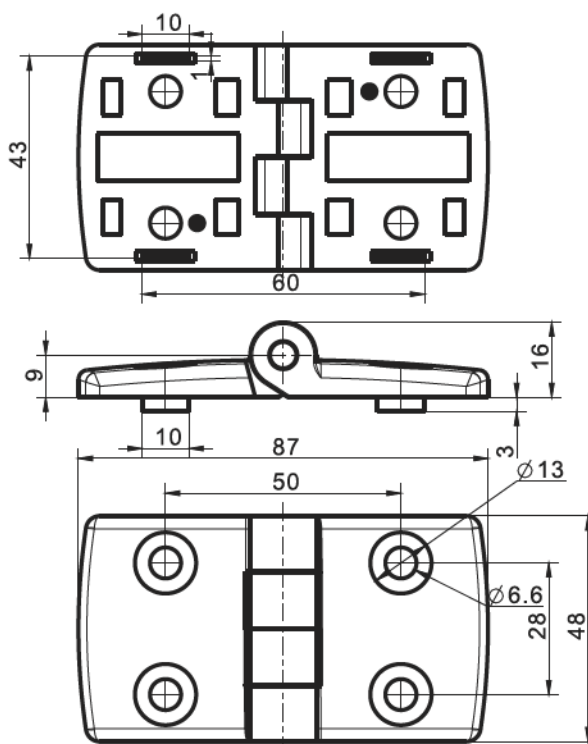
产品型号

Product code

KB238-1170

KB238-2系列

平装PA铰链



-材质及表面处理Material and treatment:

- 1.黑色PA铰链BlackPA hinge
- 2.不锈钢销子Stainless steel pin

-最大静载荷参数Maximum static load parameters:

- 1.轴向载荷Axial load:400N
- 2.径向载荷Radial load:300N

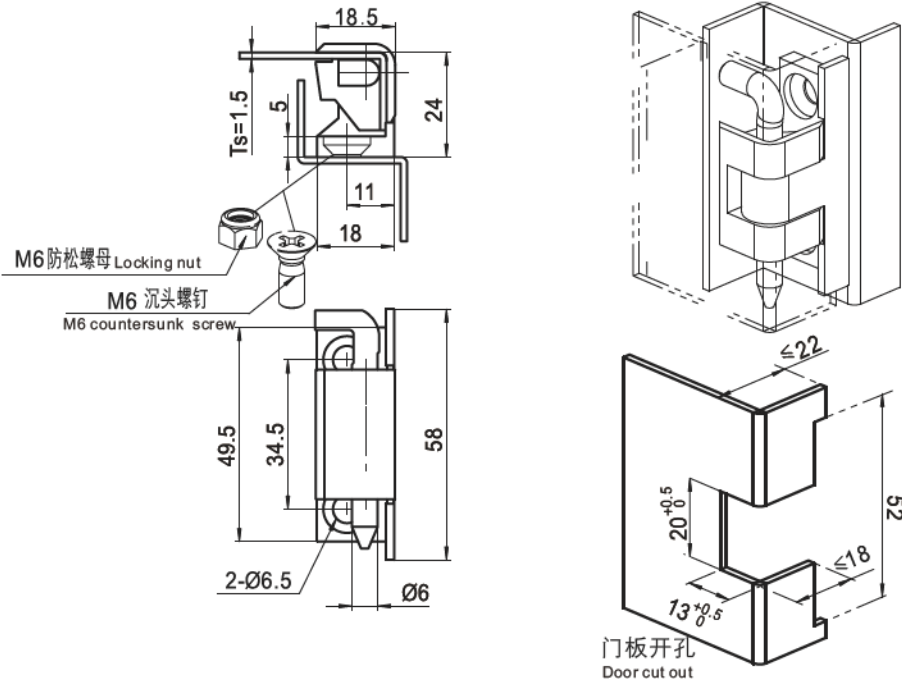
产品型号

Product code

KB238-2170

轻型插销卡式铰链

KB303-1系列



-材质及表面处理Material and treatment:
1. 锌合金黑色铰链Zinc alloy black coated hinges,
2. 镀锌钢销子galvanized steel pin

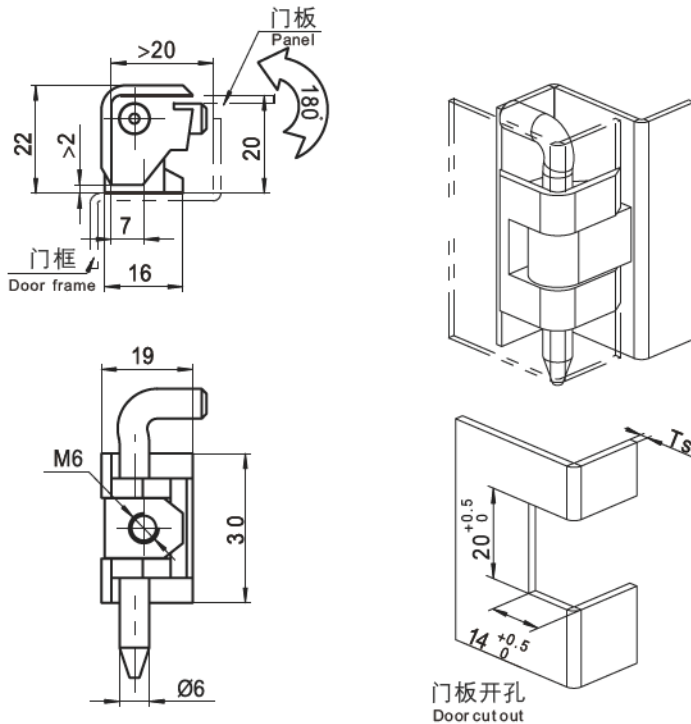
-最大静载荷参数Maximum static load parameters:
1. 轴向载荷Axial load:1000N
2. 径向载荷Radial load:1000N

黑色, 锌合金
Black, zinc alloy

KB303-1111

轻型插销卡式铰链

KB304-1系列



-材质及表面处理Material and treatment:
1. 锌合金黑色铰链Zinc alloy black coated hinges,
2. 镀锌钢销子galvanized steel pin

-最大静载荷参数Maximum static load parameters:
1. 轴向载荷Axial load:650N
2. 径向载荷Radial load:900N

门板厚度Ts
Panel thickness

黑色, 锌合金
Black, zinc alloy

镀铬, 锌合金
Chromed, zinc alloy

Ts=1.5

KB304-1111

KB304-1116

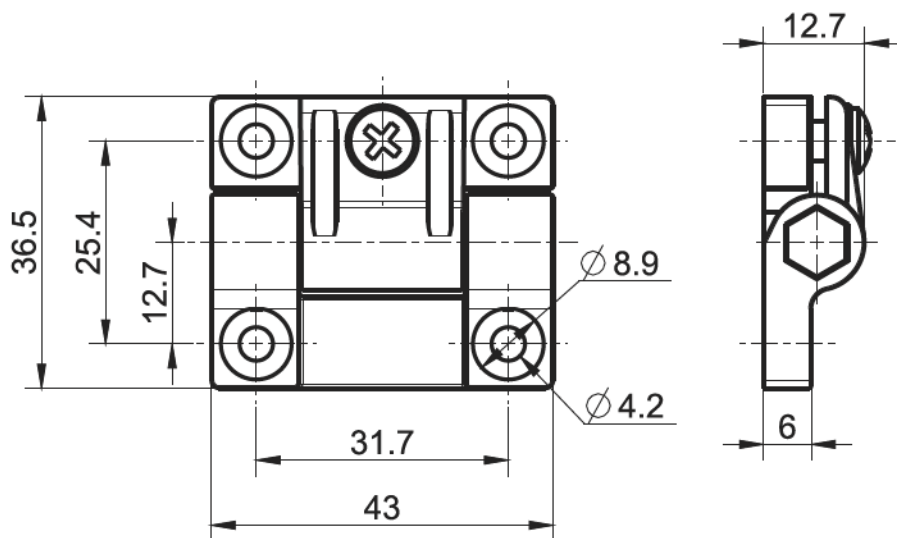
Ts=2

KB304-1211

KB304-1216

KB215-1系列

塑料可调阻尼铰链



-材质及表面处理Material and treatment:

1. POM铰链座,聚碳酸酯转轴
POM hinge seat, polycarbonate rotating shaft;
2. 不锈钢紧固件Stainless steel fastener

-最大静载荷参数Maximum static load parameters:

1. 轴向载荷Axial load:250N
2. 径向载荷Radial load:350N
3. 最大工作扭矩Maximum operating torque:0.8N.m

圆孔型/Round hole

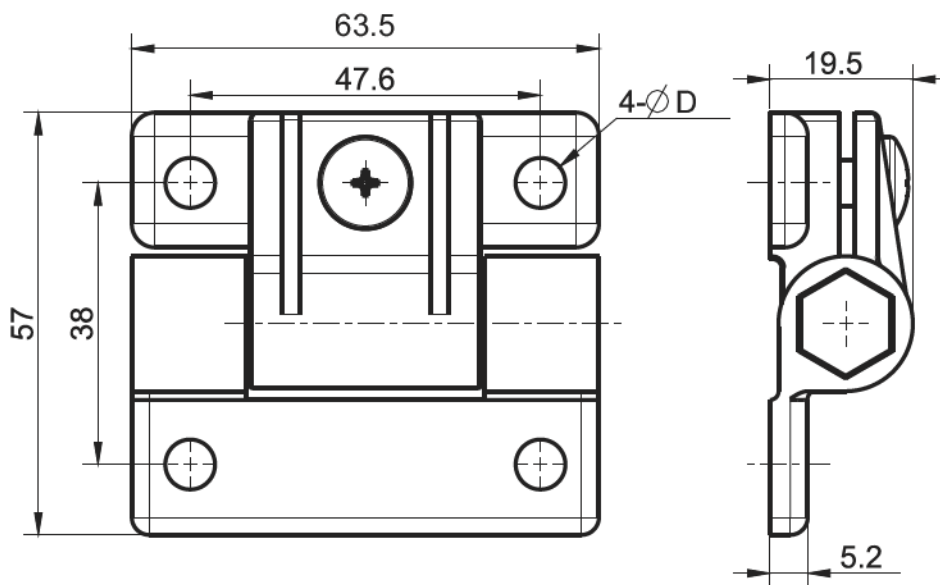
六角孔型/hexagonal hole

KB215-1180

KB215-1280

KB215-2系列

塑料可调阻尼铰链



-材质及表面处理Material and treatment:

1. POM铰链座,聚碳酸酯转轴
POM hinge seat, polycarbonate rotating shaft;
2. 不锈钢紧固件Stainless steel fastener

-最大静载荷参数Maximum static load parameters:

1. 轴向载荷Axial load:500N
2. 径向载荷Radial load:900N
3. 最大工作扭矩Maximum operating torque:3.5N.m

D=6.8

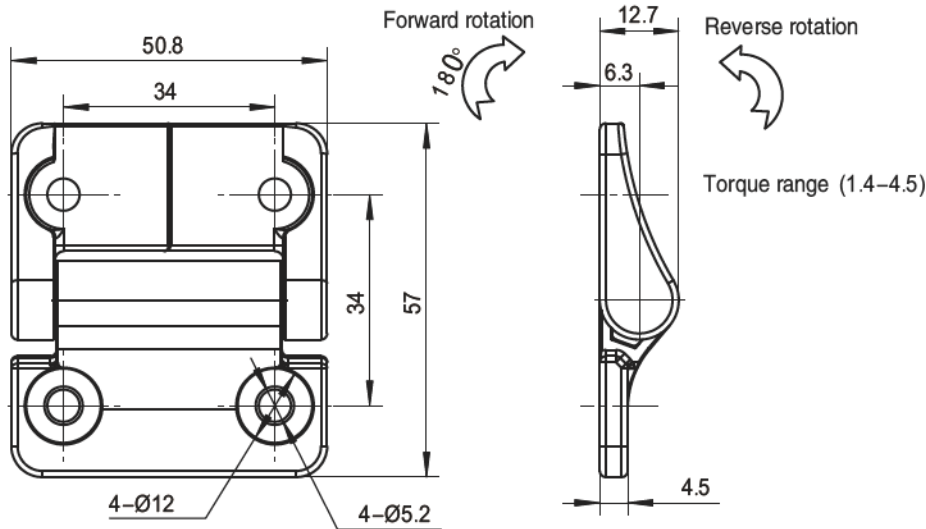
D=8.2

KB215-2180

KB215-2280

平装阻尼铰链

KB222-1/2系列



铰链

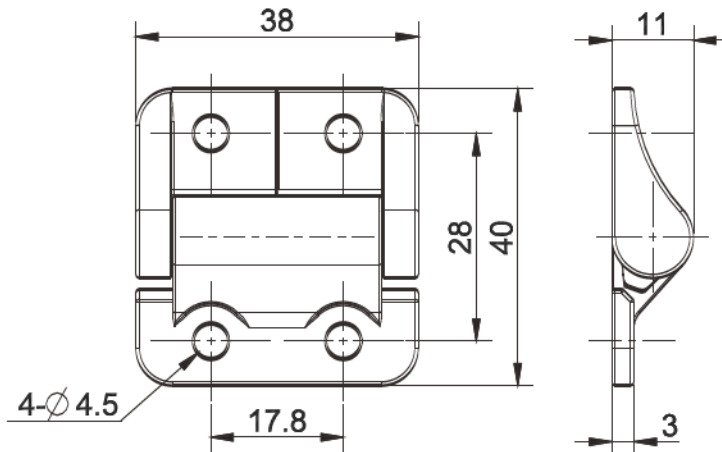
扭矩对称性 Symmetric	对称扭矩(N.m) Symmetrical torque	扭矩不对称性 Asymmetric	正向扭矩(N.m) Forward torque	反向扭矩(N.m) Reverse torque
KB222-1111	1.8	KB222-2111	2.3	1.4
KB222-1211	2.3	KB222-2211	3.4	2.0
KB222-1311	3.4	KB222-2311	4.5	2.7

-材质及表面处理Material and treatment:
1. 锌合金黑色铰链Zinc alloy black coated hinge,

-最大静载荷参数Maximum static load parameters:
1. 轴向载荷Axial load:200N
2. 径向载荷Radial load:200N

平装阻尼铰链

KB222-3/4系列



扭矩对称/Symmetric		对称扭矩(N.m) Symmetrical torque	扭矩不对称/Asymmetric		正向扭矩(N.m) Forward torque	反向扭矩(N.m) Reverse torque
通孔/through-hole	台阶孔/stepped hole		通孔/through-hole	台阶孔/stepped hole		
KB222-3111	KB222-5111	0.9	KB222-4111	KB222-6111	1.4	0.8
KB222-3211	KB222-5211	1.4	KB222-4211	KB222-6211	1.8	1.1
KB222-3311	KB222-5311	1.8	KB222-4311	KB222-6311	2.3	1.4
KB222-3411	KB222-5411	2.3	KB222-4411	KB222-6411	2.8	1.7
			KB222-4511	KB222-6511	0.8	1.4

-材质及表面处理Material and treatment:
1. 锌合金黑色铰链Zinc alloy black coated hinge,

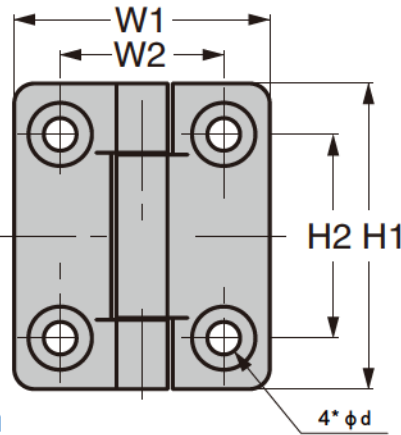
-最大静载荷参数Maximum static load parameters:
1. 轴向载荷Axial load:125N
2. 径向载荷Radial load:125N

KBLMF系列

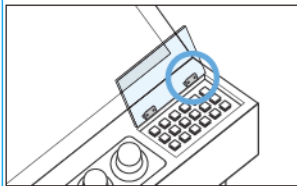
微型平面扭矩铰链



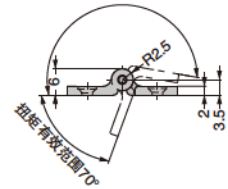
-材质及表面处理Material and treatment:
1.本体聚缩醛 POM Bulk polyacetal;
2.轴承 SUS304 Bearing stainless steel;



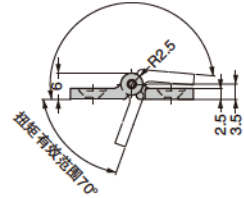
【使用例】



KBLMF08, KBLMF15(扭矩有效范围190°)



KBLMF25(扭矩有效范围185°)



产品型号 Product code	颜色 colour	W1	W2	H1	H2	t	φ d	扭矩 N.m	扭矩 kgf.cm
KBLMF08-BL	黑色	25	16	20	10	2	φ 2.4孔 φ 4.2沉头孔	0.0784 ^{+25%}	0.8 ^{+25%}
KBLMF08-WT	白色								
KBLMF15-BL	黑色	28	18	30	20	2.5	φ 3.2孔 φ 6.2沉头孔	0.147 ^{+33%}	1.5 ^{+33%}
KBLMF15-WT	白色								
KBLMF25-BL	黑色	28	18	40	25	2.5	φ 3.2孔 φ 6.2沉头孔	0.245 ^{+33%}	2.5 ^{+33%}
KBLMF25-WT	白色								

KBL201系列

不锈钢扭矩铰链



KBL201-3

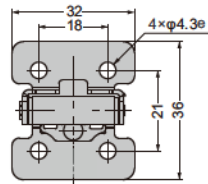


KBL201-2

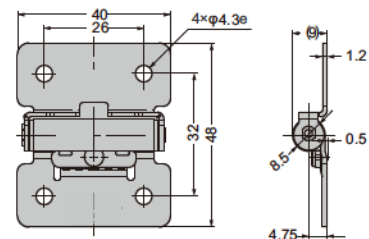
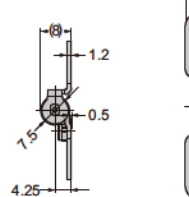


KBL201-1

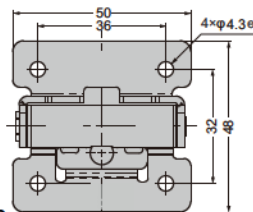
-材质及表面处理Material and treatment:
1.304镜面抛光 SUS304Mirror polishing;



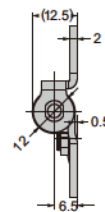
KBL201-1



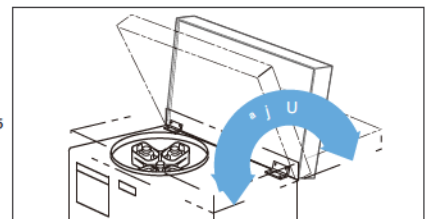
KBL201-2



KBL201-3



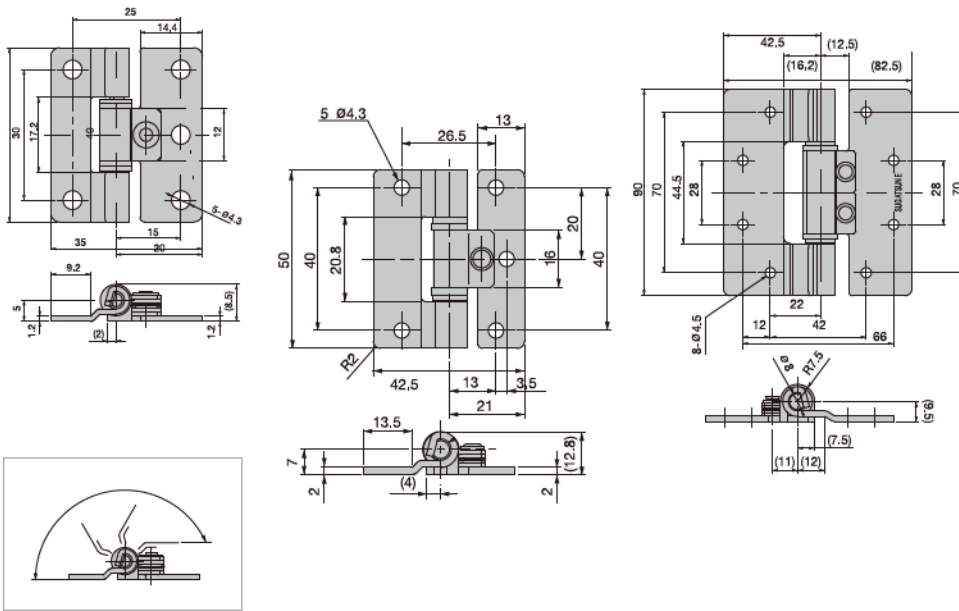
【使用例】



产品型号 Product code	功能说明 Functional specifications
自由角度/Free angle	
KBL201-1	扭矩:0.35N.m/ 3.6kgf.cm
KBL201-2	扭矩:0.7N.m/ 7.1kgf.cm
KBL201-3	扭矩:1.5N.m/15.3kgf.cm

不锈钢任意停扭矩铰链

KBL209系列



适用扭矩范围



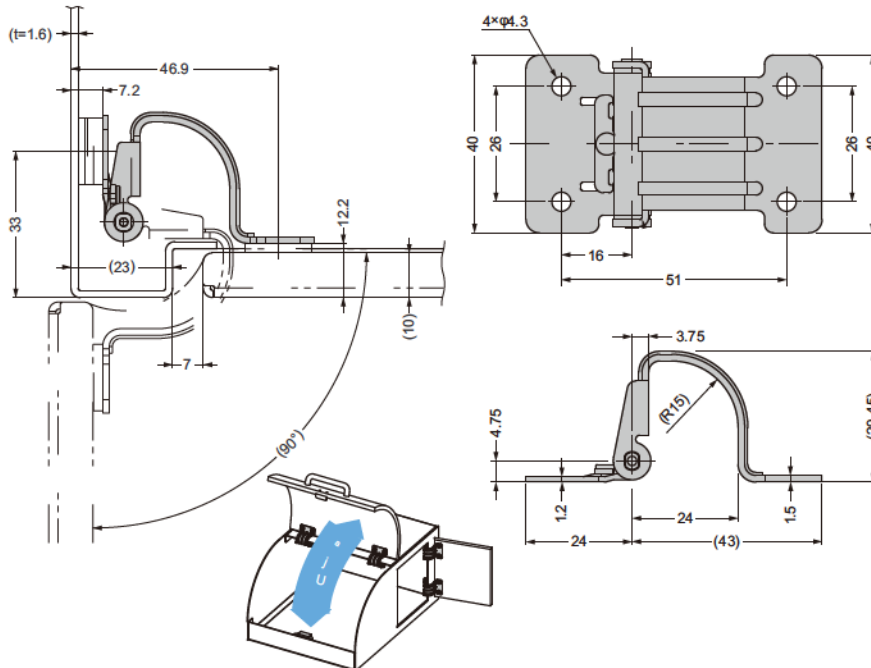
铰链

产品型号 Product code	功能说明 Functional specifications
自由角度/Free angle	
KBL209-1	0~0.5.N.m
KBL209-2	0.9~1.9.N.m
KBL209-3	3.5~5.8.N.m

-材质及表面处理Material and treatment:
1.304镜面抛光 SUS304Mirror polishing:

不锈钢任意停扭矩铰链

KBL203系列



-材质及表面处理Material and treatment:
1.304镜面抛光 SUS304Mirror polishing:

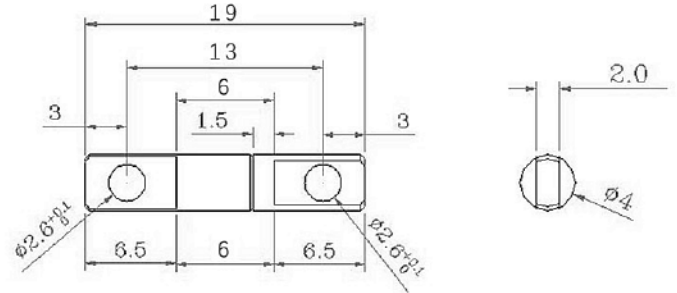
产品型号 Product code	功能说明 Functional specifications
自由角度/Free angle	
KBL203-1	扭矩:0.35N.m/ 3.6kgf.cm
KBL203-2	扭矩:0.7N.m/ 7.1kgf.cm

KBZ0419系列



-材质及表面处理Material and treatment:
1. 碳钢抛光材质 Carbon steel polishing material;
2. 阻尼范围0.1NM-0.4NM Damping range 0.1NM-0.4NM;

一字型阻尼铰链

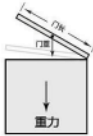


产品选型

请按下面公式算出扭矩值进行选型

量门长度 (单位 :m) 称重量 (单位 :KG)

1N.M 约等于 10KGf.CM 1KGf.CM 代表在一厘米处所承受的力是1千克力。



按照公式计算

$$\text{扭矩值 (N.m)} = \frac{\text{门长 (m)} \times \text{门重 (KG)} \times 9.8}{2}$$

算出的扭矩值 < 铰链扭力时 门可随意停
算出的扭矩值 > 铰链扭力时 门不能随意停
可缓慢关闭

碳钢
Carbon steel

KBZ0419

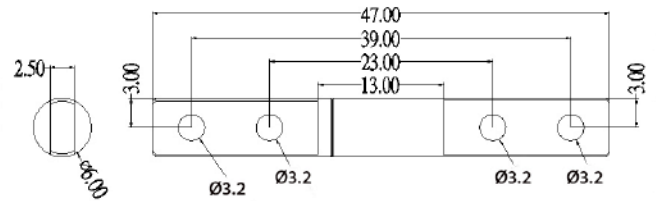
KBZ647系列



-材质及表面处理Material and treatment:
1. 碳钢抛光材质 Carbon steel polishing material;
2. 阻尼范围0.1NM-0.8NM Damping range 0.1NM-0.8NM;

一字型阻尼铰链

1KGFCM~8KGFCM
(0.1NM~0.8NM)

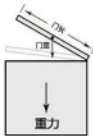


产品选型

请按下面公式算出扭矩值进行选型

量门长度 (单位 :m) 称重量 (单位 :KG)

1N.M 约等于 10KGf.CM 1KGf.CM 代表在一厘米处所承受的力是1千克力。



按照公式计算

$$\text{扭矩值 (N.m)} = \frac{\text{门长 (m)} \times \text{门重 (KG)} \times 9.8}{2}$$

算出的扭矩值 < 铰链扭力时 门可随意停
算出的扭矩值 > 铰链扭力时 门不能随意停
可缓慢关闭

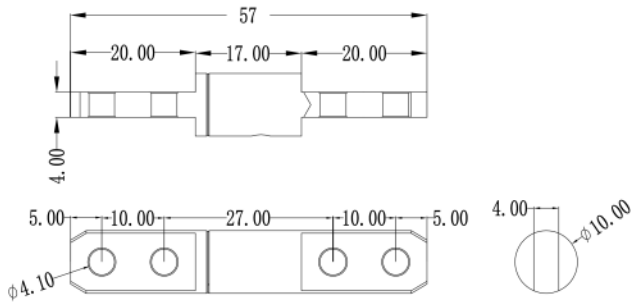
碳钢
Carbon steel

KBZ0647

一字型阻尼铰链

KBZ1057系列

2-50kgf.cm 360度旋转



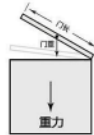
产品选型

请按下面公式算出扭矩值进行选型

量门长度 (单位:m) 称重量 (单位:KG)

1N.M 约等于 10KGF.CM 1KGF.CM 代表在一厘米处所承受的力是 1 千克力。

按照公式计算



$$\text{扭矩值 (N-m)} = \frac{\text{门长 (m)}}{2} \times \text{门重 (KG)} \times 9.8$$

算出的扭矩值 < 铰链扭力时 门可随意停
算出的扭矩值 > 铰链扭力时 门不能随意停
可缓慢关闭



铰链

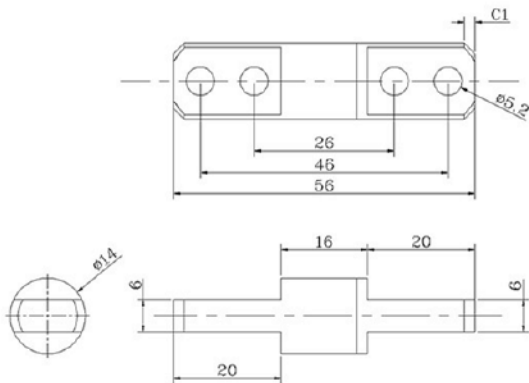
-材质及表面处理Material and treatment:
1.碳钢抛光材质 Carbon steel polishing material:
2.阻尼范围0.2NM-5NM Damping range 0.2NM-5NM:

碳钢
Carbon steel

KBZ1057

一字型阻尼铰链

KBZ1456系列



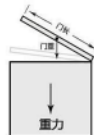
产品选型

请按下面公式算出扭矩值进行选型

量门长度 (单位:m) 称重量 (单位:KG)

1N.M 约等于 10KGF.CM 1KGF.CM 代表在一厘米处所承受的力是 1 千克力。

按照公式计算



$$\text{扭矩值 (N-m)} = \frac{\text{门长 (m)}}{2} \times \text{门重 (KG)} \times 9.8$$

算出的扭矩值 < 铰链扭力时 门可随意停
算出的扭矩值 > 铰链扭力时 门不能随意停
可缓慢关闭



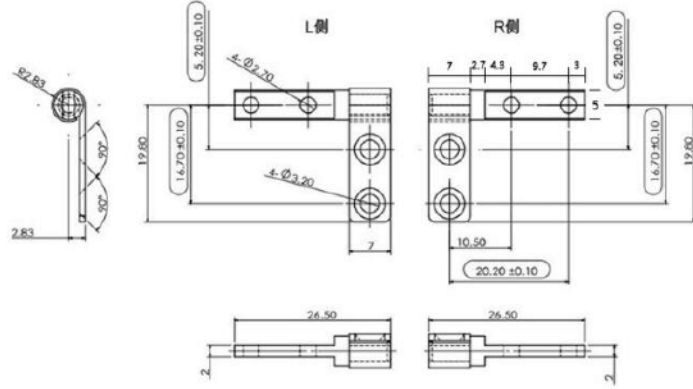
-材质及表面处理Material and treatment:
1.碳钢抛光材质 Carbon steel polishing material:
2.阻尼范围1NM-7NM Damping range 1NM-7NM:

碳钢
Carbon steel

KBZ1456

KBZ1716系列

L型阻尼铰链



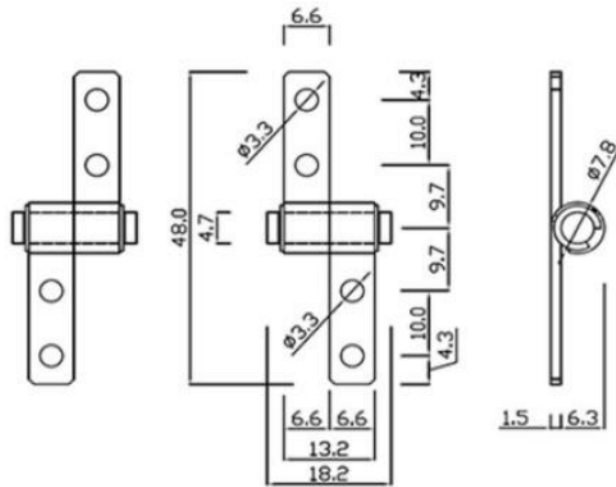
-材质及表面处理Material and treatment:
 1.碳钢抛光材质 Carbon steel polishing material:
 2.阻尼范围0.1NM-0.5NM Damping range 0.1NM-0.5NM:

碳钢
Carbon steel

KBZ1716

KBZ901系列

360° 阻尼铰链



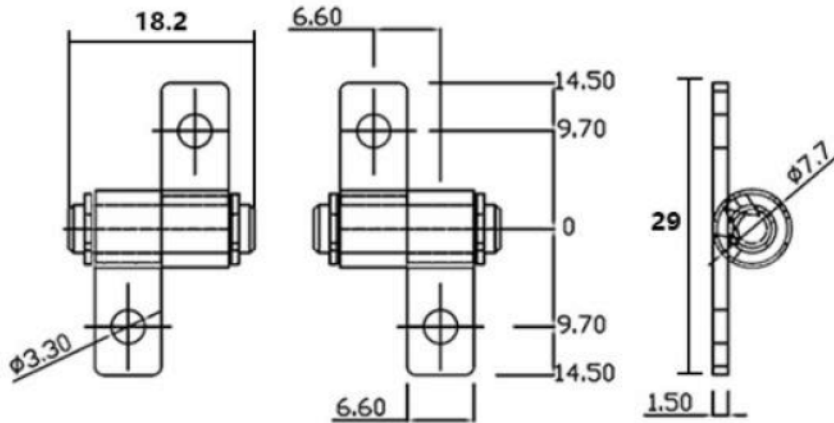
-材质及表面处理Material and treatment:
 1.碳钢抛光材质 Carbon steel polishing material:
 2.阻尼范围0.15NM-1NM Damping range 0.15NM-1NM:

碳钢
Carbon steel

KBZ901

小型阻尼铰链

KBZ057系列



铰链

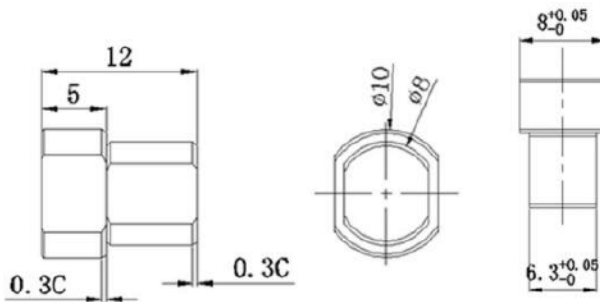
-材质及表面处理Material and treatment:
1. 碳钢抛光材质 Carbon steel polishing material:
2. 阻尼范围0.15NM-0.8NM Damping range 0.15NM-0.8NM

碳钢
Carbon steel

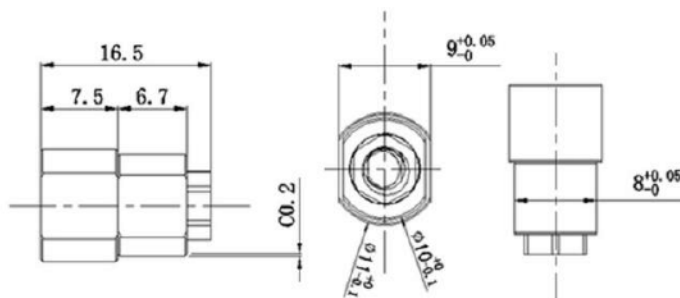
KBZ057

小型阻尼铰链

KBZ202系列



KBZ202



KBZ202-1



KBZ202



KBZ202-1

-材质及表面处理Material and treatment:
1. 碳钢抛光材质 Carbon steel polishing material:
2. KBZ202阻尼范围0.1NM-1NM Damping range 0.1NM-1NM:
3. KBZ202-1阻尼范围0.3NM-1.3NM Damping range 0.3NM-1.3NM:

碳钢
Carbon steel

KBZ202

碳钢
Carbon steel

KBZ202-1

KBZ112系列

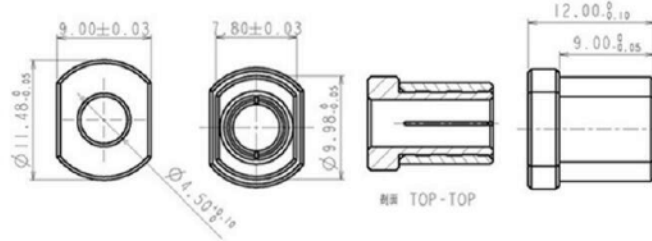


KBZ112

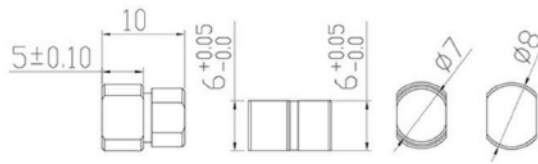
KBZ112-1

-材质及表面处理Material and treatment:
 1.碳钢抛光材质 Carbon steel polishing material:
 2.KBZ112阻尼范围
 0.15NM-1.3NM Damping range 0.15NM-1.3NM:
 3.KBZ112-1阻尼范围
 0.3NM-0.6NM Damping range 0.3NM-0.6NM:

小型阻尼铰链



KBZ112



KBZ112-1

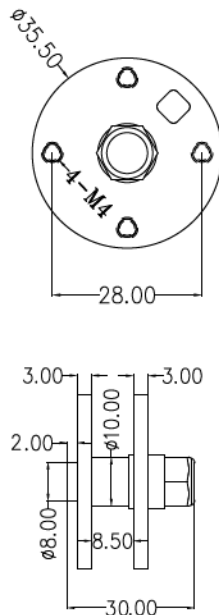
碳钢 Carbon steel	碳钢 Carbon steel
KBZ112	KBZ112-1

KBZ888系列

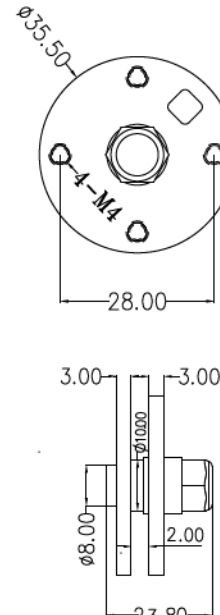


-材质及表面处理Material and treatment:
 1.碳钢抛光材质 Carbon steel polishing material:
 2.阻尼范围 1NM-7NM Damping range 1NM-7NM:

任意停圆盘型阻尼铰链



KBZ888



KBZ888-1

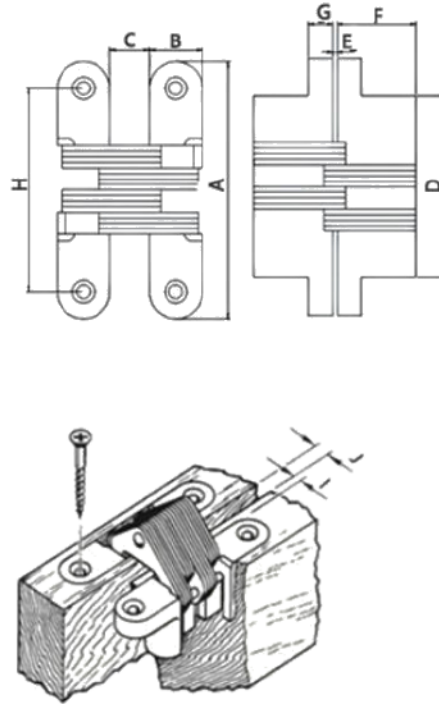
碳钢 Carbon steel	碳钢 Carbon steel
KBZ888	KBZ888-1

KBZ系列

隐形铰链



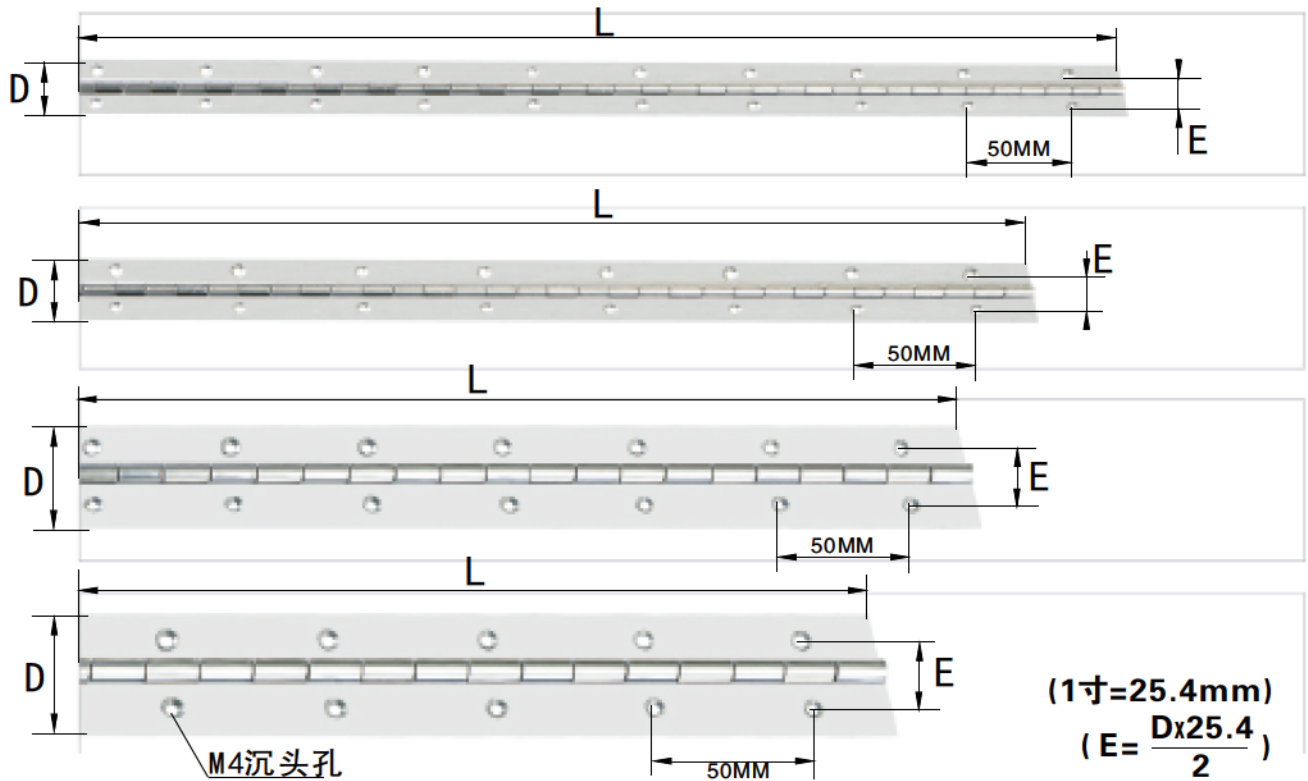
-材质及表面处理Material and treatment:
1. 锌合金镀锌铰链Zinc alloy galvanized hinge.



型号	尺寸										适用门厚 (mm)	适用门重 (kg)
	A	B	C	D	E	F	G	H	I	J		
KBZ01A	43	9.6	7	22	1	11.3	5.5	33	2.4	2.2	≥ 15	≤ 5
KBZ01B	25	9.5	7	9.5	2	11.3	5.5	16	2.4	2.2	≥ 15	≤ 2
KBZ01SS	39	12.3	11	12.2	0.5	17.5	1.5	27.5	3	5	≥ 18	≤ 5
KBZ01	44.5	13	8.8	18.7	0.8	19	4.9	31.7	3	2.8	≥ 18	≤ 5
KBZ02	60.5	12.5	8.1	30	0.8	17.8	5.6	46	2.7	2.7	≥ 18	≤ 10
KBZB90	60	14.5	17	29.5	4.5	24	6.2	46.5	5	7	≥ 25	≤ 10
KBZ02C	67	13	12	20	0.2	18.3	2.5	52/30	4	4	≥ 20	≤ 10
KBZ03	69.5	15.5	10.8	33.7	1	23	7	51.8	3.6	3.6	≥ 22	≤ 15
KBZ04	94	18	13.5	54.5	1	27	8.7	74	4.5	4.5	≥ 27	≤ 35
KBZ05	116	24.5	18	63.8	1.23	37	10.5	105	6	6	≥ 32	≤ 45
KBZ06	115	28	23	61.3	1.2	41	9.1	81.2 87.8	6.5	10	≥ 40	≤ 60
KBZ07	138.8	33.5	28.2	73.8	1.3	50	11	113.5 102.4	7.5	13.2	≥ 50	≤ 80

不锈钢排铰链

KBZHP-181005系列



型号	长度L* 宽度D* 厚度	每件数量 (支)
KBZHP-181005	1.8 米 x1.0 寸 x0.5mm	5x20=100
KBZHP-181205	1.8 米 x1.2 寸 x0.5mm	5x20=100
KBZHP-181505	1.8 米 x1.5 寸 x0.5mm	5x20=100
KBZHP-181006	1.8 米 x1.0 寸 x0.6mm	5x20=100
KBZHP-181206	1.8 米 x1.2 寸 x0.6mm	5x20=100
KBZHP-181506	1.8 米 x1.5 寸 x0.6mm	5x20=100
KBZHP-181008	1.8 米 x1.0 寸 x0.8mm	3x20=60
KBZHP-181208	1.8 米 x1.2 寸 x0.8mm	3x20=60
KBZHP-181508	1.8 米 x1.5 寸 x0.8mm	3x20=60
KBZHP-181009	1.8 米 x1.0 寸 x0.9mm	3x20=60
KBZHP-181209	1.8 米 x1.2 寸 x0.9mm	3x20=60
KBZHP-181509	1.8 米 x1.5 寸 x0.9mm	3x20=60
KBZHP-182009	1.8 米 x2.0 寸 x0.9mm	4x10=40
KBZHP-181212	1.8 米 x1.2 寸 x1.2mm	2x10=20
KBZHP-181512	1.8 米 x1.5 寸 x1.2mm	2x10=20
KBZHP-182012	1.8 米 x2.0 寸 x1.2mm	2x10=20
KBZHP-182512	1.8 米 x2.5 寸 x1.2mm	4x5=20
KBZHP-183012	1.8 米 x3.0 寸 x1.2mm	4x5=20
KBZHP-181215	1.8 米 x1.2 寸 x1.5mm	2x10=20
KBZHP-181515	1.8 米 x1.5 寸 x1.5mm	2x10=20
KBZHP-182015	1.8 米 x2.0 寸 x1.5mm	4x5=20
KBZHP-182515	1.8 米 x2.5 寸 x1.5mm	4x5=20
KBZHP-183015	1.8 米 x3.0 寸 x1.5mm	4x5=20

(无孔为KBZHP-W)

KST 凯思特

Tel:025-86563252

http://www.kst-metal.com