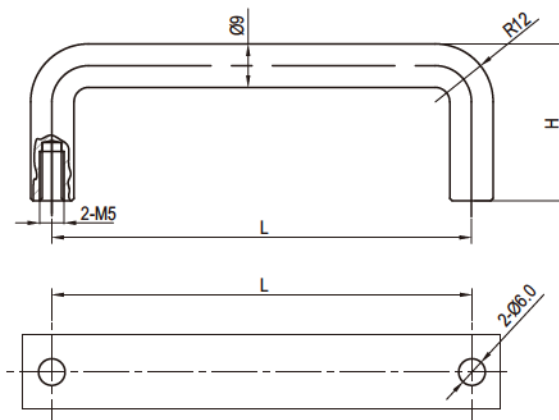


KC011系列



-材质及表面处理Material and treatment:
 1. 不锈钢304拉手 Stainless steel buckle
 -最大静载荷Maximum static load:1200N(L=100);
 其它长度规格可按要求定制。起订量1000件:
 Other length specification can be
 customized according to the requirement,
 moq 1000 pieces:

U型外露式拉手



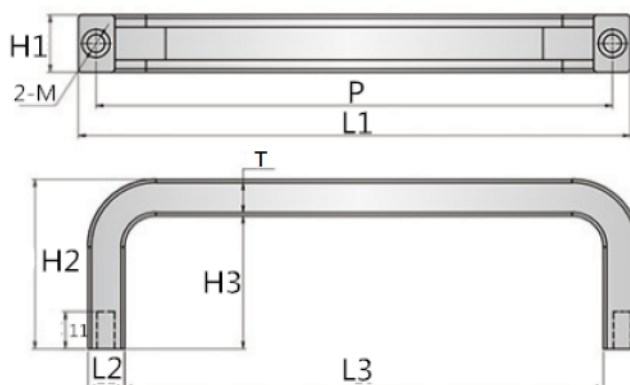
产品型号 Product model	材质 Material	H	L
KC011-90	碳钢镀锌 Steel	32	90
KC011-100		32	100
KC011-119		40	119
KC011-135		32	135
KC011-149	40	149	
KC011-S90	SUS304 Stainless Steel	32	90
KC011-S100		32	100
KC011-S119		40	119
KC011-S135		32	135
KC011-S149		40	149

KCY51系列

不锈钢拉手

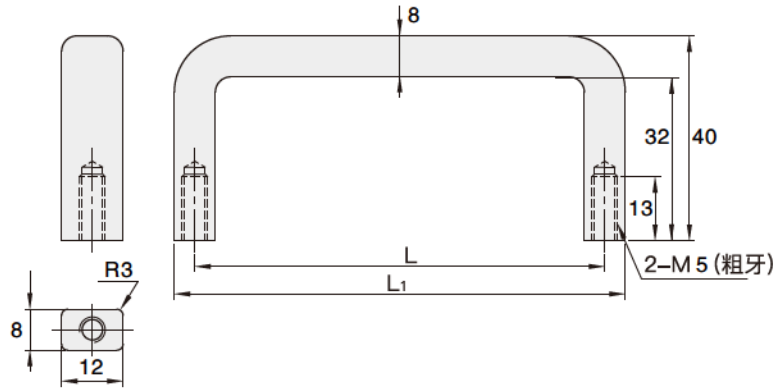


-材质及表面处理Material and treatment:
 1. 不锈钢镜面抛光拉手SUS304
 stainless steel mirror polishing handle



产品型号 Product model	P	L1	L2	L3	H1	H2	H3	T	M
KCY51-100	100	110	8	94	14	30	22	8	2-M5×0.8
KCY51-120	120	130	10	110	15.5	40	30	10	2-M5×0.8
KCY51-150	150	163	11	141	17	50	39	11	2-M6×1.0
KCY51-180	180	194	12	170	17	50	38	12	2-M6×1.0

内螺纹方形拉手



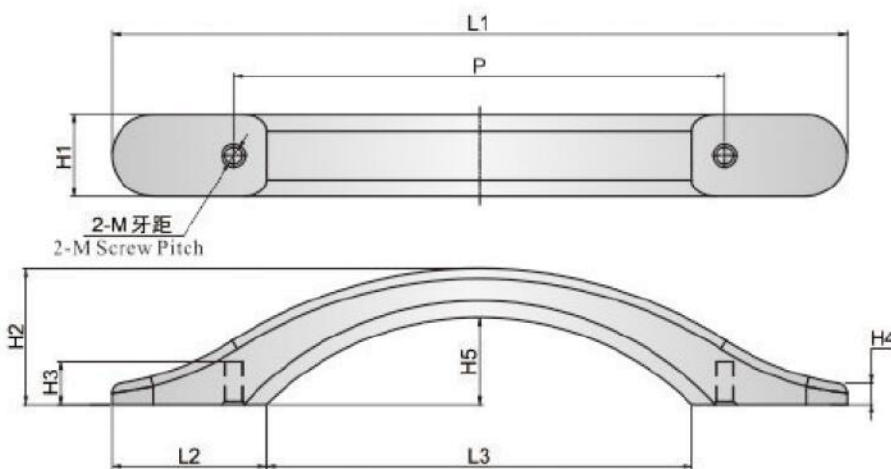
产品型号 Product mode	L	L ₁
KCZ11(铝合金) KCZ11S(SUS304)	80	88
	100	108
	125	133
	160	168
	200	208
	250	258

KCZ11系列



-材质及表面处理Material and treatment:
 1. 铝型材黑色喷涂拉手 Aluminum profile black coated handle:
 2. 铝型材抛光拉手 Aluminum profile polishing handle:
 3. 不锈钢抛光拉手 Stainless steel polished handle:

不锈钢拉手



产品型号 Product mode	L ₁	L ₂	L ₃	P	H ₁	H ₂	H ₃	H ₄	H ₅	M
KCY52-120	181	37	107	120	20	33	12	6	21.5	2-M5×0.8
KCY52-149	225	47	131	149	24.5	42	13	6.5	27	2-M6×1.0

KCY52系列

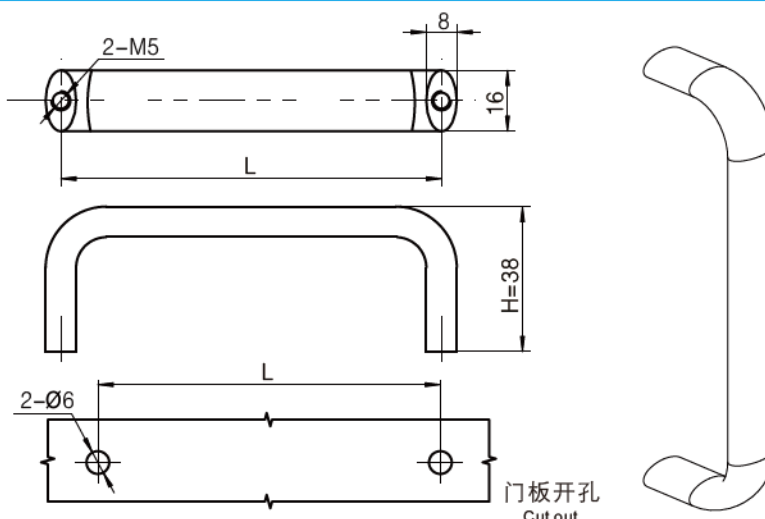


-材质及表面处理Material and treatment:
 1. 不锈钢镜面抛光拉手 SUS304
 stainless steel mirror polishing handle

拉
手

KC103-1系列

铝型材直立拉手



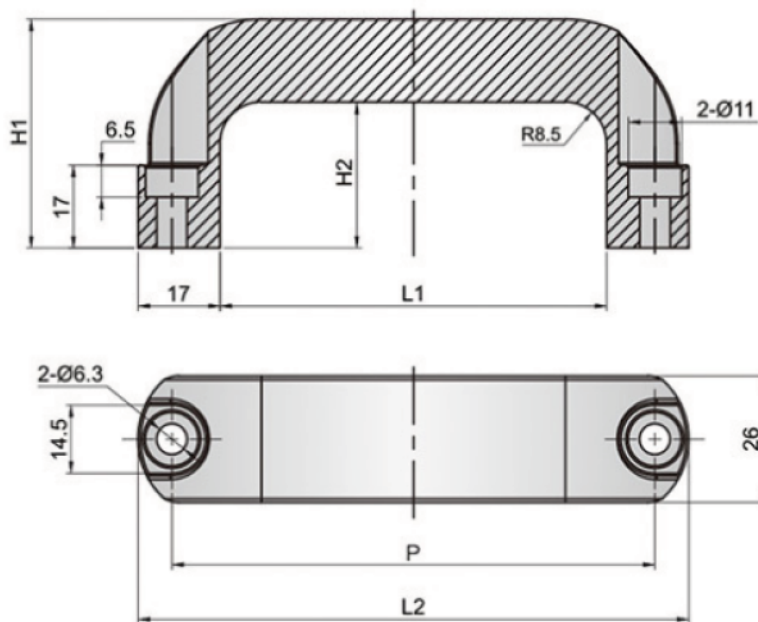
其它长度规格可按要求定制。起订量1000件；
Other length specification can be customized according to the requirement, moq 1000 pieces,

-材质及表面处理Material and treatment:
1.铝型材黑色喷涂拉手Aluminum profile black coated handle
-最大静载荷Maximum static load:1000N (L=100)

黑色, 铝合金 Black, Aluminum	L
KC103-1031	75
KC103-1131	100
KC103-1131-115	115
KC103-1231	125
KC103-1331	150

KCY43系列

铝合金拉手



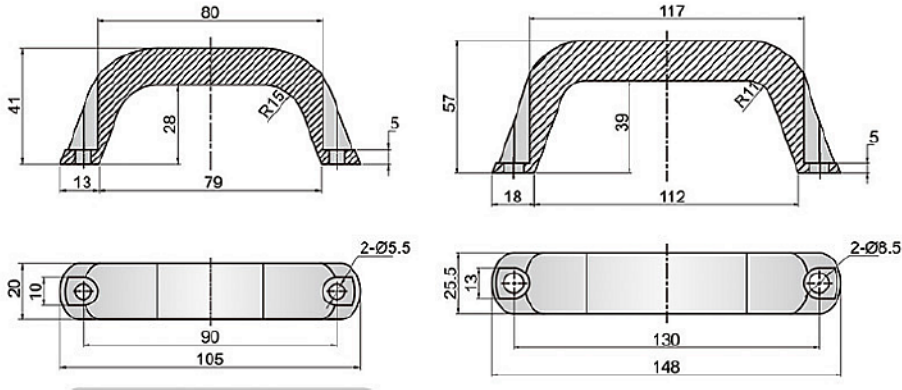
-材质及表面处理Material and treatment:
1.铝型材黑色喷涂拉手Aluminum profile black coated handle
-最大静载荷Maximum static load:1000N (L=100)

产品型号 Product mode	H1	H2	L1	L2	P
KCY43B-100	47	30	80	114	100
KCY43B-116	54.5	37.5	96	130	116
KCY43B-132	55	38	135.5	147.5	132

折弯拉手

KCY41系列

拉手



KCY41B-90

KCY41B-130

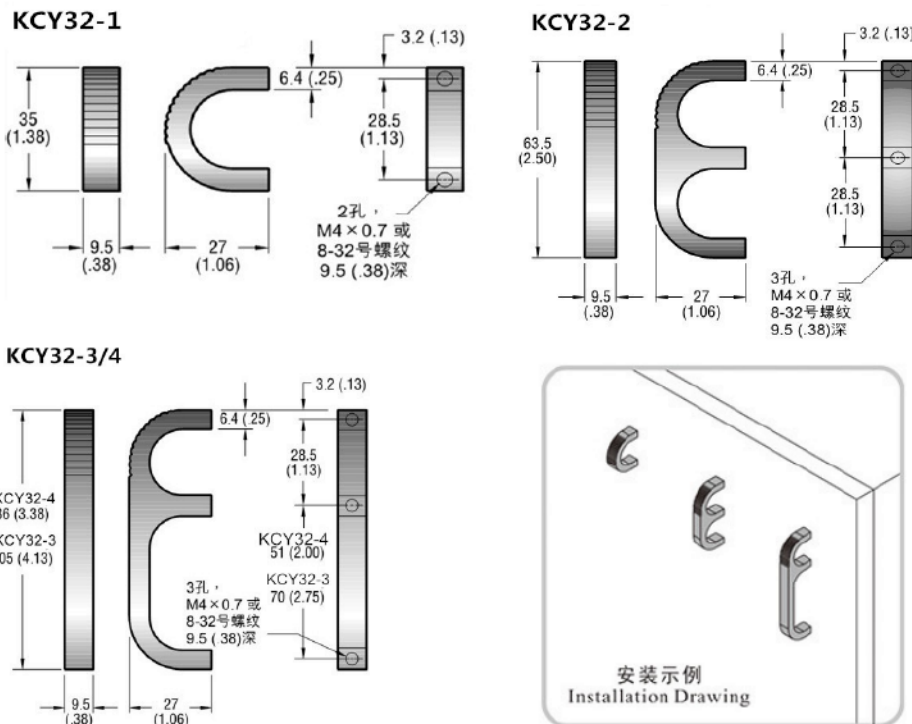


产品型号 Product mode	孔距 Hole spacing
KCY41B-90	90
KCY41B-130	130

-材质及表面处理Material and treatment:
1. 铝型材黑色喷涂拉手 Aluminum profile black coated handle
-最大静载荷 Maximum static load: 1000N (L=100)

铝合金U型拉手

KCY32系列



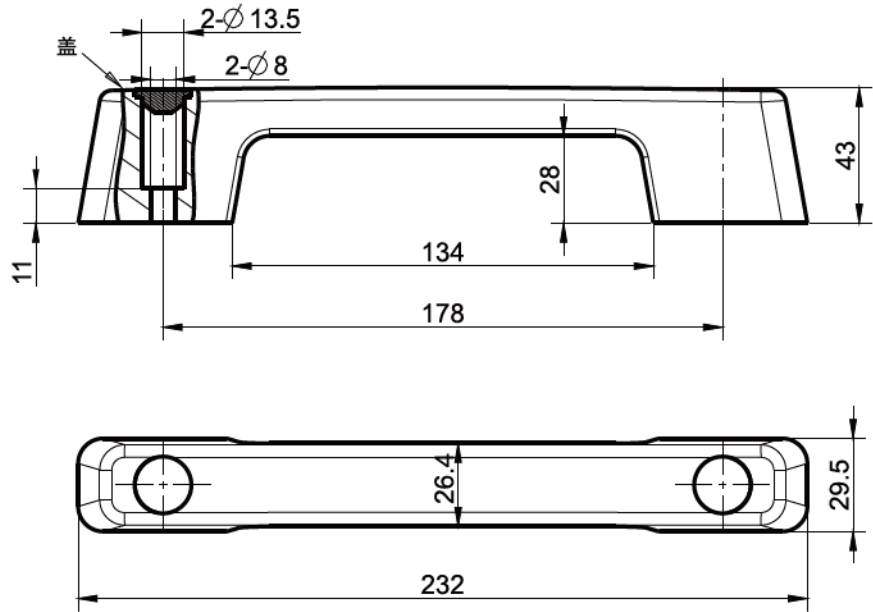
产品型号 Product model			
KCY32-1	KCY32-2	KCY32-3	KCY32-4

-材质及表面处理Material and treatment:
1. 铝合金黑色阳极及白色阳极
Aluminum alloy anode black and white anode

拉
手

KC104-5系列

通孔型塑料直立拉手

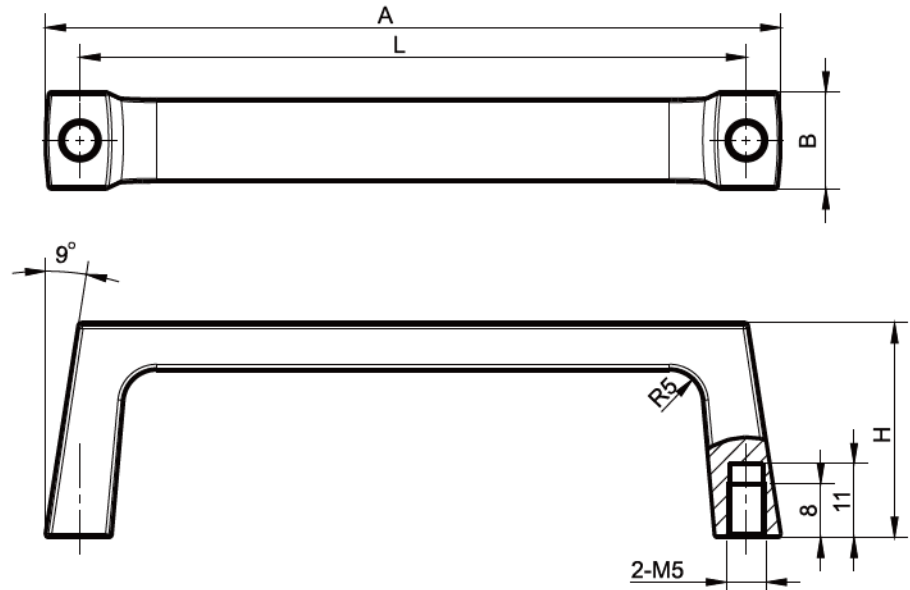


-材质及表面处理Material and treatment:
1.黑色ABS拉手Black ABS handle
-最大静载荷Maximum static load:1150N

黑色塑料拉手
Black plastic handle
KC104-5180

KC107-1系列

螺孔型直立拉手



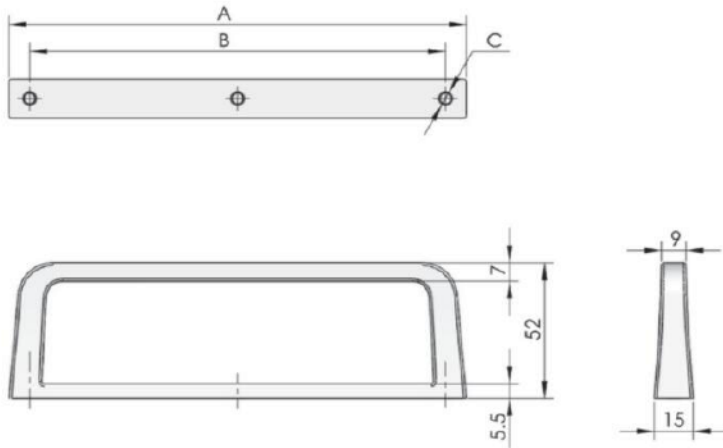
-材质及表面处理Material and treatment:
1.锌合金银灰喷涂拉手Zinc alloy silver coated handle
-最大静载荷Maximum static load:650N

亚光, 锌合金 silver, zinc	A	B	L	H
KC107-1113	112.5	11	102	23
KC107-1213	120	14	104	35

铝型材拉手

KCZ18系列

拉手

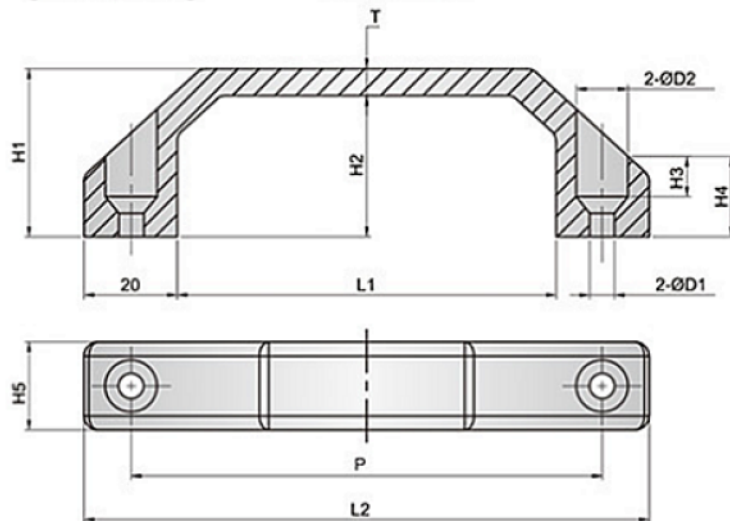


产品型号 Product model	A	B	C
KCZ18-1	42.6	30	2-M4
KCZ18-2	86.7	71	2-M5
KCZ18-3	131.2	115.5	2-M5
KCZ18-4	176	160	2-M5

-材质及表面处理Material and treatment:
1. 锌合金银灰喷涂拉手 Zinc alloy silver coated handle

不锈钢拉手

KCY53系列



产品型号 Product mode	L1	L2	P	H1	H2	H3	H4	H5	D1	D2	T
KCY53-100	80	120	100	36	30	8.5	17	18.5	5.3	11.5	6
KCY53-150	130	170	150	50	42	10.5	19	25.5	6.5	13.5	8

-材质及表面处理Material and treatment:
1. 不锈钢镜面抛光拉手 SUS304
stainless steel mirror polishing handle

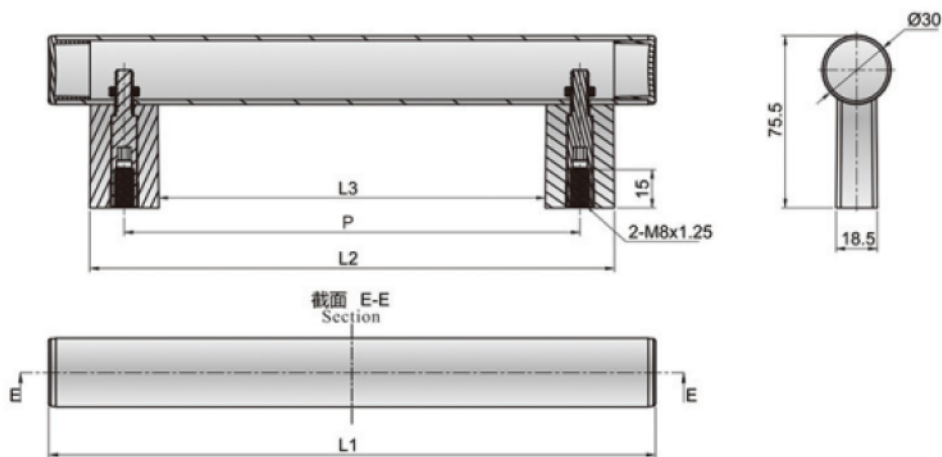
KCY225系列

铝合金拉手

拉手



-材质及表面处理Material and treatment:
1. 材质:尼龙安装座, 铝合金管
nylon installation, aluminum alloy tube
2. 表面处理:铝合金管阳极氧化银色
silver aluminum alloy tube anode oxidation.



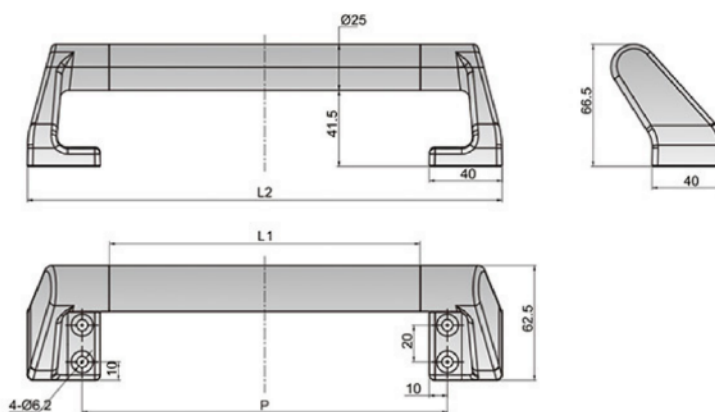
产品型号 Product model	L1	L2	L3	P
KCY225-200	266	230	169	200
KCY225-300	366	331	269	300
KCY225-500	566	531	469	500

KCY223系列

斜拉手



-材质及表面处理Material and treatment:
1. 铝合金拉手Aluminum alloy handle:
-最大静载荷Maximum static load:1000N (L=100)

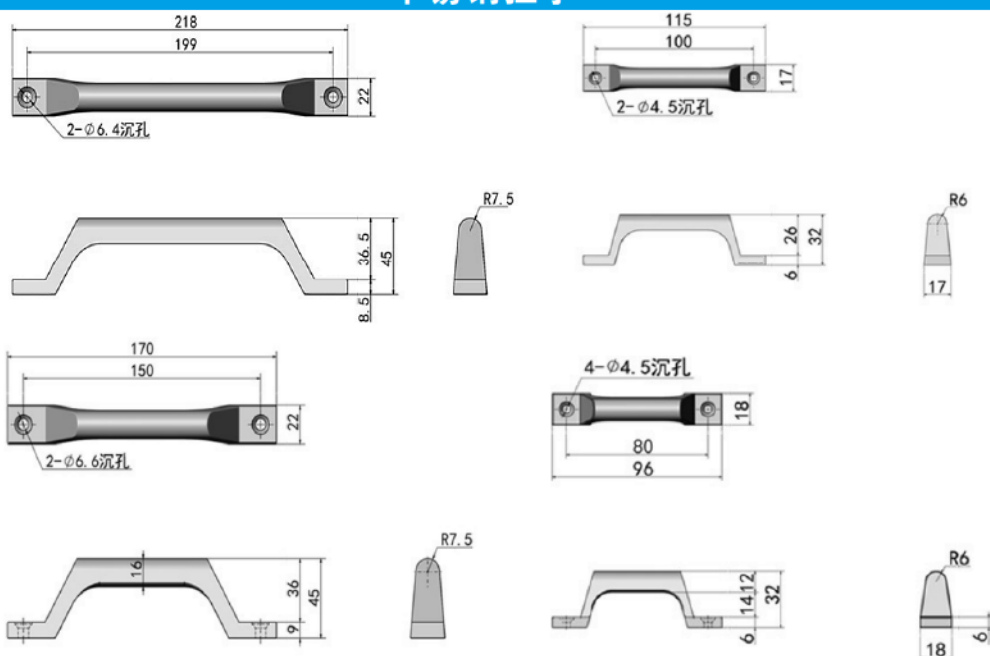


产品型号 Product mode	安装孔距P Installation Hole DistanceL	铝棒长度 L1	L2	座子颜色 Aluminum Rod Color	铝棒颜色 Pedestal Color
KCY223W-200W	200	170	260	银色	银色
KCY223W-200B	200	170	260	银色	黑色
KCY223B-200W	200	170	260	黑色	银色
KCY223B-200B	200	170	260	黑色	黑色
KCY223W-300W	300	270	360	银色	银色
KCY223W-300B	300	270	360	银色	黑色
KCY223B-300W	300	270	360	黑色	银色
KCY223B-300B	300	270	360	黑色	黑色
KCY223W-500W	500	470	560	银色	银色
KCY223W-500B	500	470	560	银色	黑色
KCY223B-500W	500	470	560	黑色	银色
KCY223B-500B	500	470	560	黑色	黑色

不锈钢拉手

KCY80系列

拉手

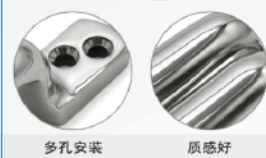
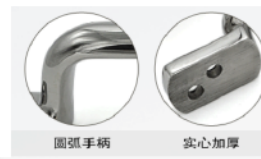
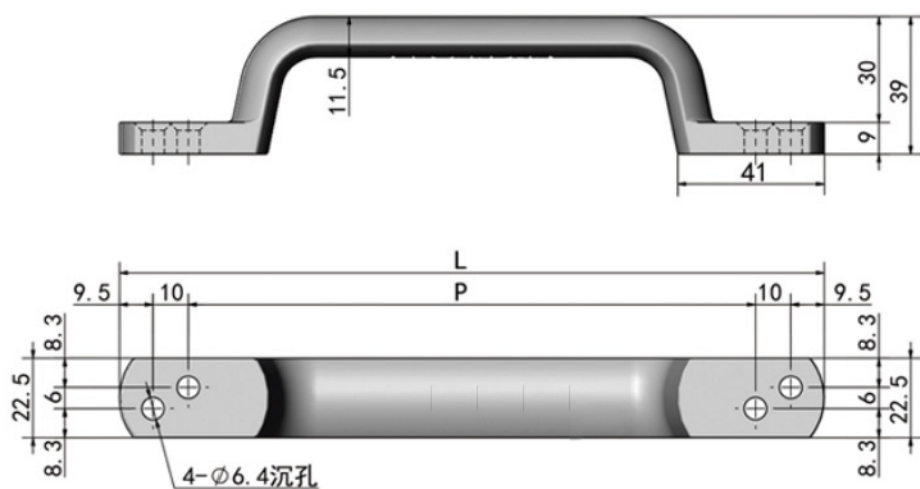


—材质及表面处理Material and treatment:
1. 不锈钢镜面抛光拉手SUS304
stainless steel mirror polishing handle

产品型号 Product model	孔距 Hole spacing
KCY80-1	190
KCY80-2	150
KCY80-3	100
KCY80-4	80

不锈钢拉手

KCY81系列

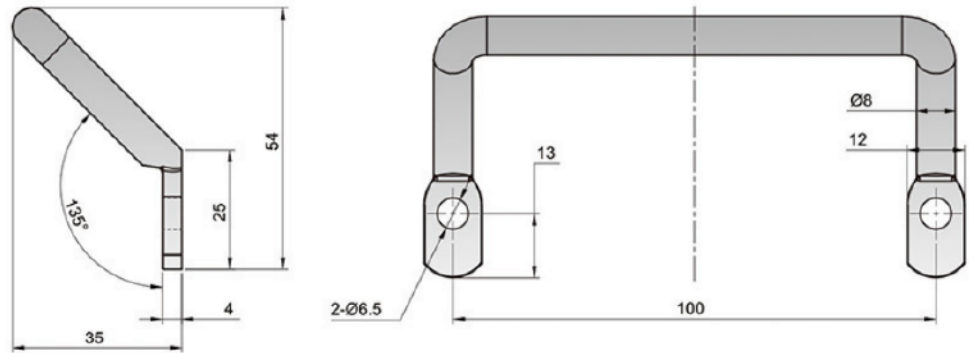


—材质及表面处理Material and treatment:
1. 不锈钢镜面抛光拉手SUS304
stainless steel mirror polishing handle

产品型号 Product model	L	P
KCY81-1	252	210
KCY81-2	234	198
KCY81-3	200	158

KCY351系列

斜拉手

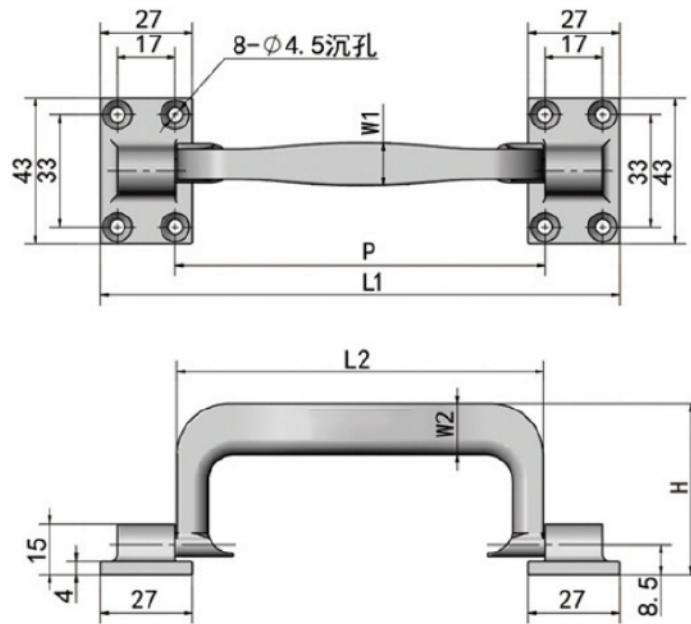


-材质及表面处理Material and treatment:
 1. 不锈钢拉手(SUS304)Stainless steel handle
 2. 铁(SPCC)黑色烤漆、镀铬或振动抛光
 black paint, bright chrome plating or vibration polishing

产品型号 Product model	表面处理 Finish	材质 Material
KCY351B	黑色烤漆	铁
KCY351Y	镀铬	铁
KCY351S	振动抛光	不锈钢

KCY82系列

不锈钢折叠拉手



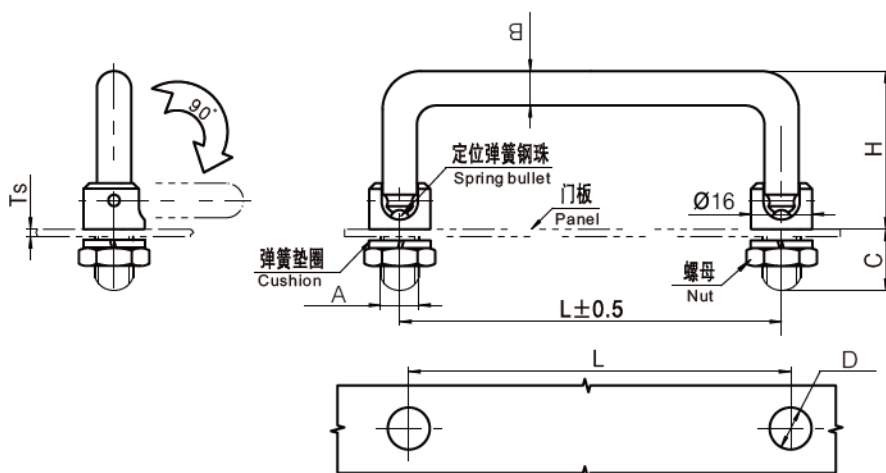
-材质及表面处理Material and treatment:
 1. 不锈钢镜面抛光拉手SUS304
 stainless steel mirror polishing handle

产品型号 Product model	P	L1	L2	W1	W2	H
KCY82-1	132	176	131	14.5	18	57
KCY82-2	109	153	108	12.5	15	50
KCY82-3	100	144	96.5	12.5	14.5	47

螺柱型折叠拉手

KC201-1/2系列

拉手



其它长度规格可按要求定制。起订量1000件；

Other length specification can be customized according to the requirement, moq 1000 pieces,

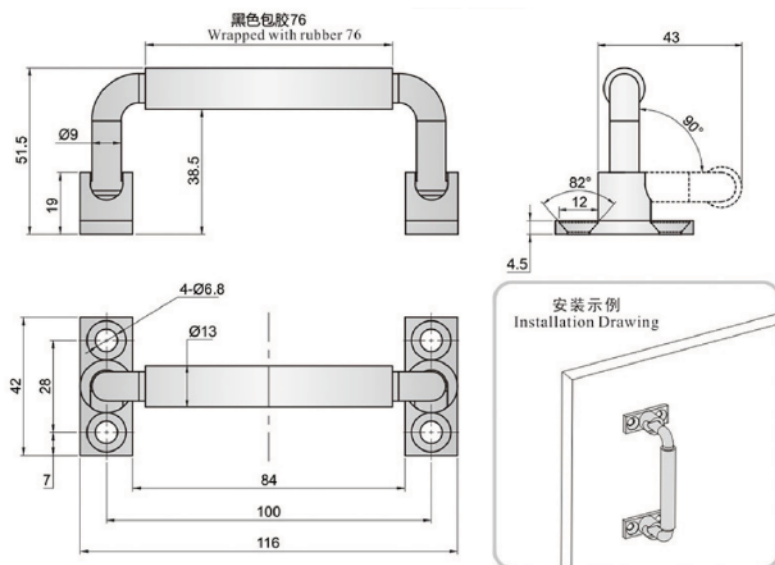
A=M10,B=Ø9,C=16,D=Ø11,H=41.5		尺寸L size	A3钢镀铬 chromed steel	尺寸L size
A3钢镀铬 chromed steel	不锈钢 Stainless steel		A=M6,B=Ø6,C=13, D=Ø7,H=32	
KC201-1146	KC201-1150	100	KC201-2146	60
KC201-1246	KC201-1250	135	KC201-2246	84
KC201-1346	KC201-1350	155	KC201-2346	100



-材质及表面处理Material and treatment:
1. 不锈钢镜面抛光拉手SUS304
stainless steel mirror polishing handle
2. A3 碳钢镀铬. A3 Carbon steel chrome plated
-最大静载荷Maximum static load:1300N(L=100)

不锈钢折叠拉手

KCY46系列



-材质及表面处理Material and treatment:
1. 不锈钢镜面抛光拉手SUS304,SUS316
Stainless steel mirror polishing handle

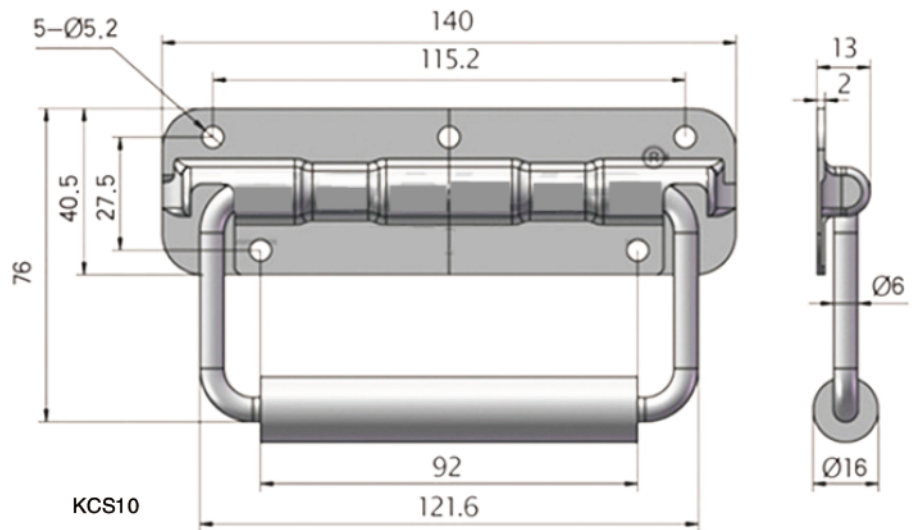
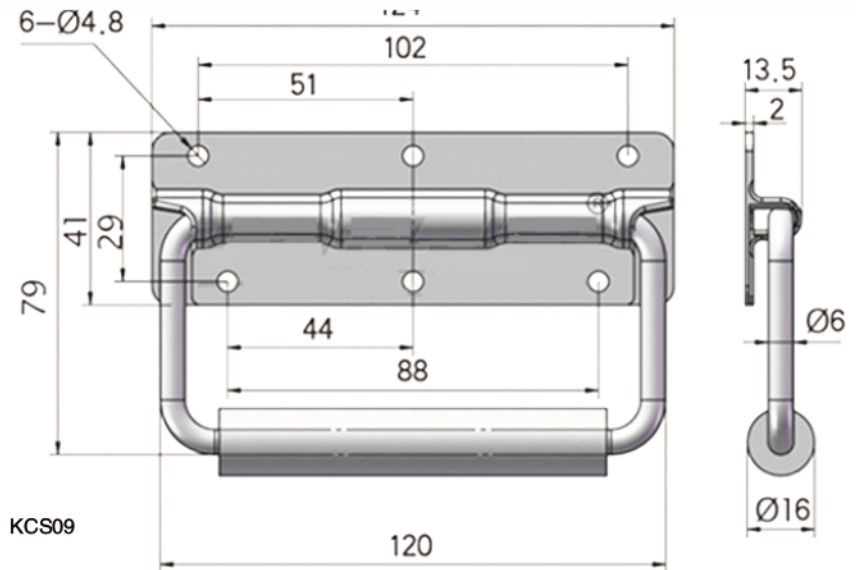
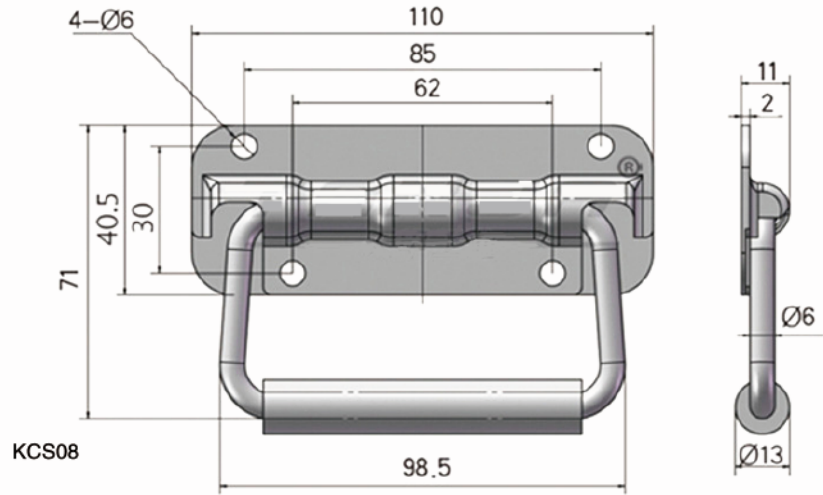
产品型号
Product model

KCY46

拉
手

KCS08/09/10系列

箱式弹簧拉手



-材质及表面处理Material and treatment:
1. 碳钢镀锌Carbon steel galvanized;

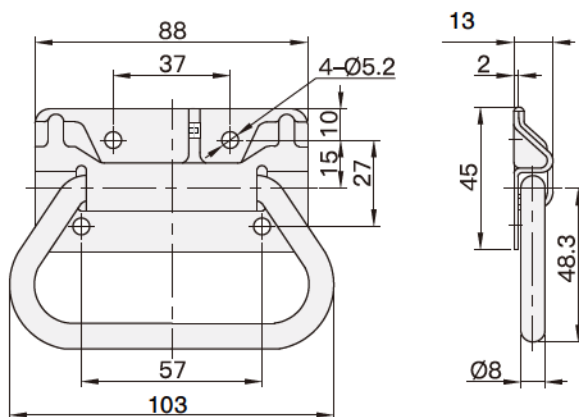
产品型号
Product model

KCS08

KCS09

KCS10

箱式弹簧拉手



- 抓手部高出安装面，易于抓握。
- 弹簧的挂扣部位位于中央，与传统产品相比，弹簧更不易脱落。
- 弹簧不会从挂扣部滑出。
- 手一离开拉手部，由于弹簧的作用，拉手即恢复为图示状态。

特征说明 Features	产品型号 Product model
碳钢镀铬	KCZ584
不锈钢	KCZ584S

KCZ584系列



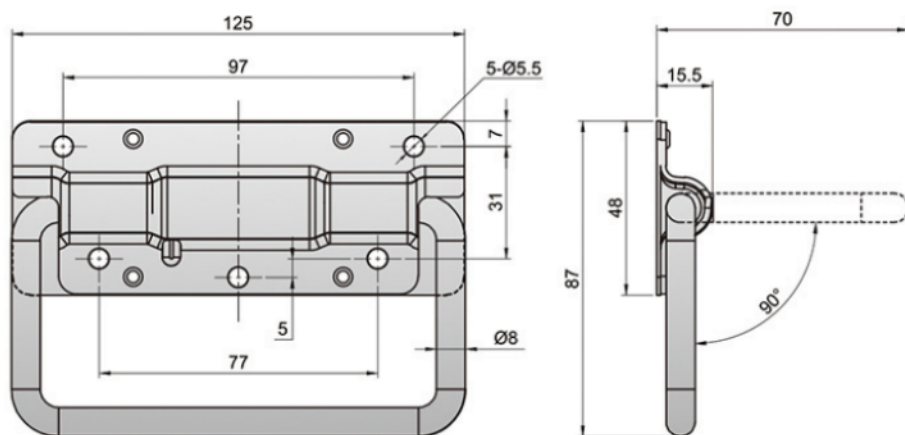
(不锈钢)



(碳钢)

-材质及表面处理Material and treatment:
1. 不锈钢镜面抛光(SUS304)Stainless steel mirror polishing
2. 碳钢镀铬Iron chrome plated

不锈钢箱式弹簧拉手



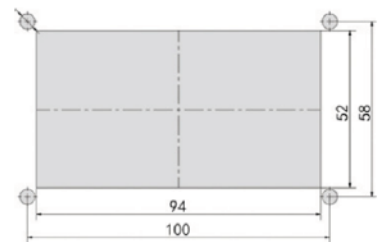
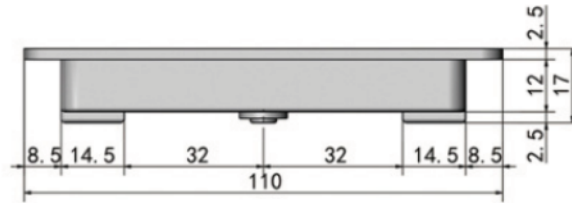
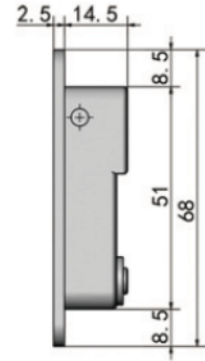
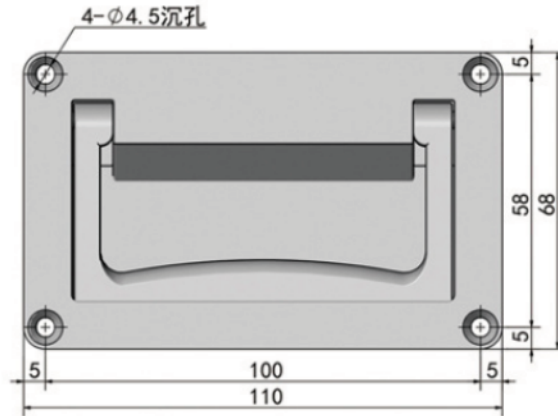
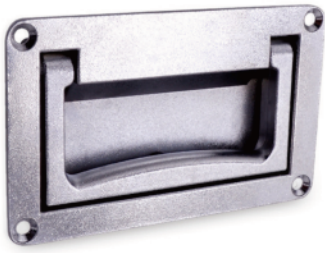
-材质及表面处理Material and treatment:
1. 不锈钢振动研磨 (SUS304)
Stainless steel vibration grinding

产品型号 Product model
KCY123

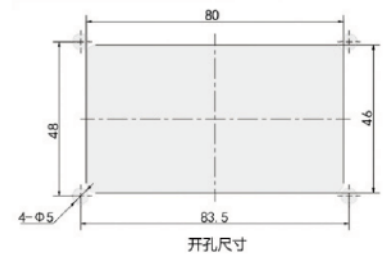
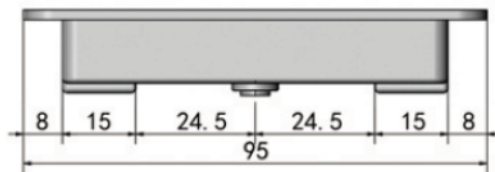
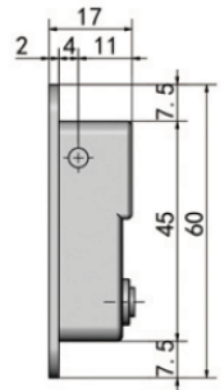
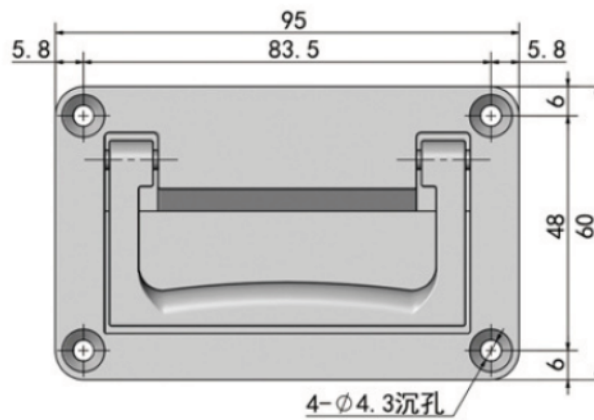
KCY25系列

锌合金镶入式折叠拉手

拉
手



KCY25-1



KCY25-2

材质及表面处理Material and treatment:
1. 锌合金镀铬 Zinc alloy plating chromium:

产品型号
Product model

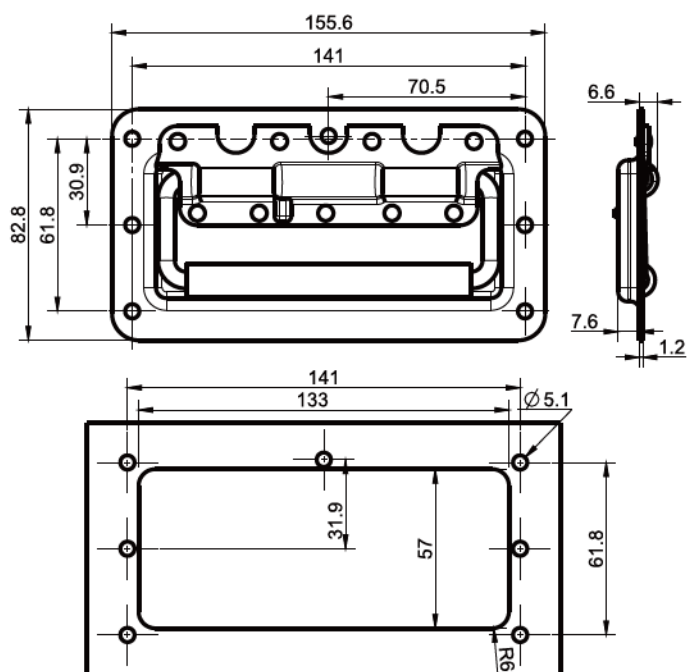
KCY25-1

KCY25-2

镶入式复位折叠拉手

KC206-1

拉手



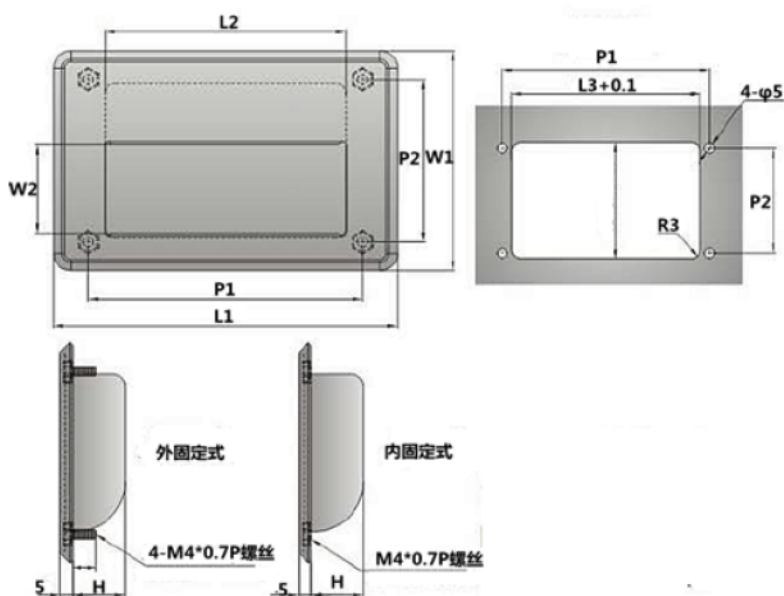
-材质及表面处理Material and treatment:
 1. 碳素钢黑色电泳拉手 Carbon steel black electrophoresis handle
 2. 橡胶套管 Rubber sleeve
 -最大静载荷 Maximum static load: 1500N

产品型号
Product model

KC206-1142

镶入式拉手

KCY28



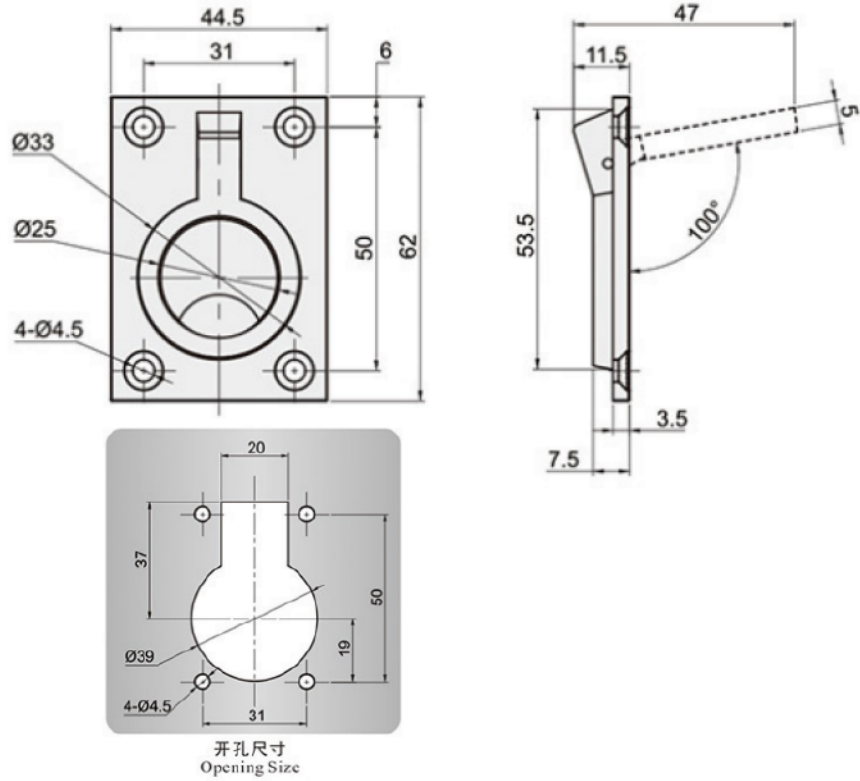
-材质及表面处理Material and treatment:
 1. 不锈钢拉丝抛光(SUS304) Stainless steel wire drawing polishing

产品型号 Product mode	固定方式 Fixed Way	L1	L2	L3	W1	W2	W3	H	P7	P2
KCY28-1	外固定	138	97	102.5	88	36	67	21	110	65
KCY28-2		109	70	74.5	64	26	45	15	88	38
KCY28-3	内固定	138	97	102.5	88	36	67	21	110	65
KCY28-4		109	70	74.5	64	26	45	15	88	38

拉
手

KCY02-2

不锈钢镶入式拉手



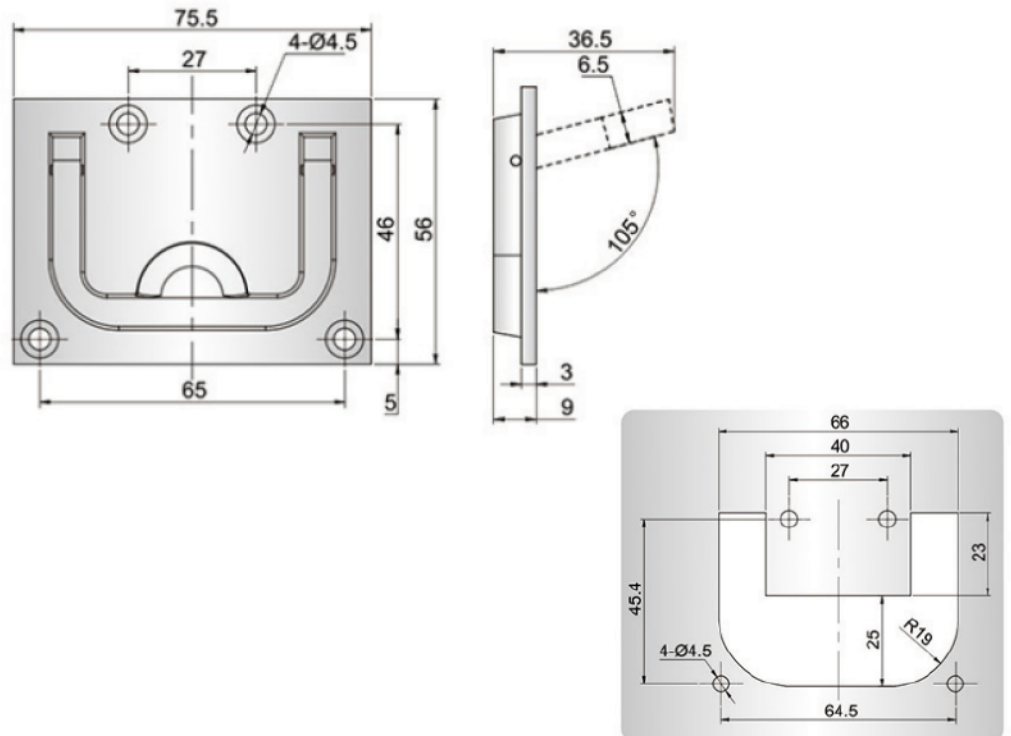
-材质及表面处理Material and treatment:
1.不锈钢镜面抛光(SUS316)Stainless steel mirror polishing

产品型号
Product model

KCY02-2

KCY03

不锈钢镶入式拉手



-材质及表面处理Material and treatment:
1.不锈钢镜面抛光(SUS316)Stainless steel mirror polishing

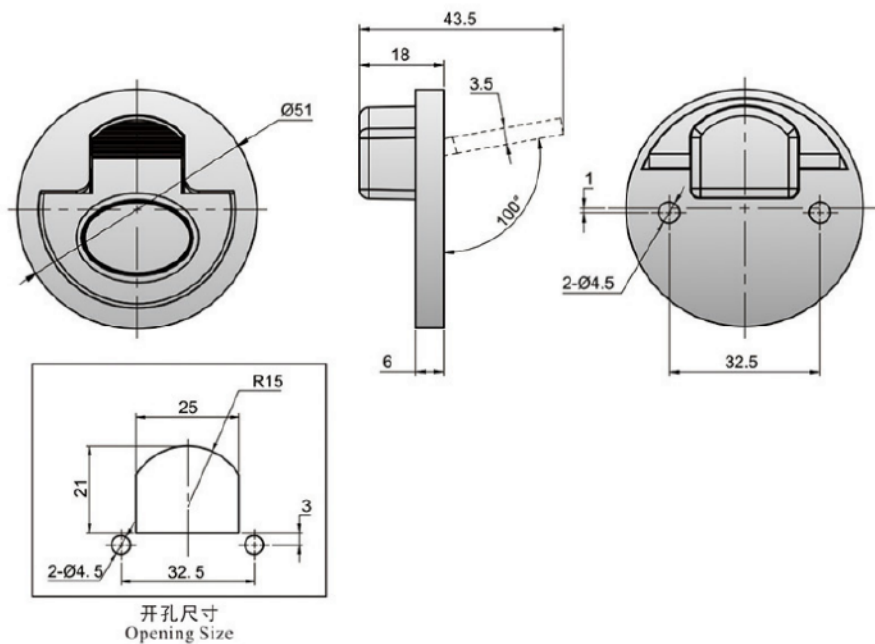
产品型号
Product model

KCY03

不锈钢圆形拉手

KCY01

拉手



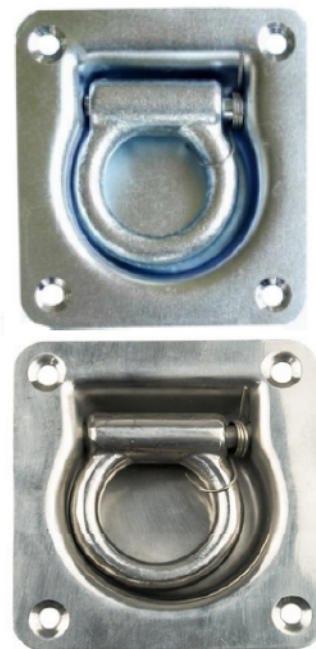
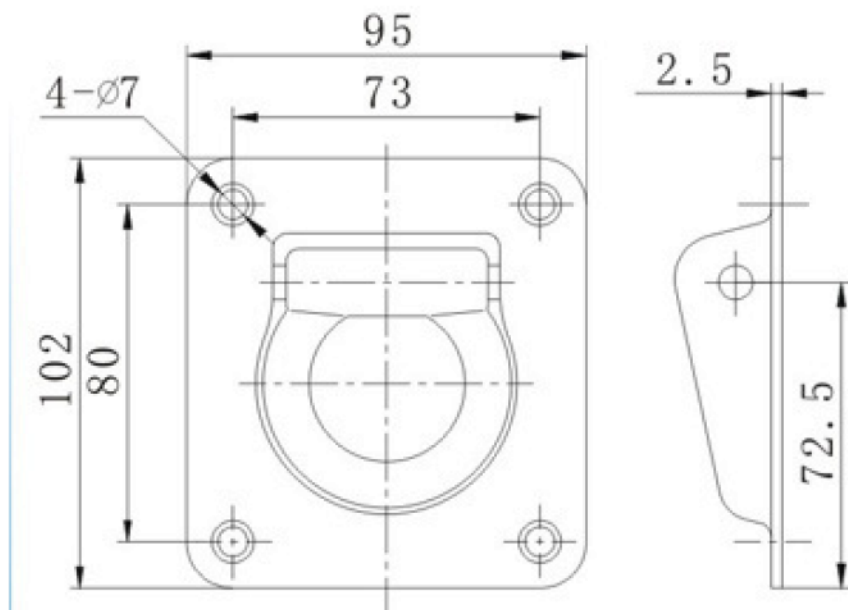
-材质及表面处理Material and treatment:
1. 不锈钢镜面抛光(SUS316)Stainless steel mirror polishing

产品型号
Product model

KCY01

卧环

KCZ580/580S



-材质及表面处理Material and treatment:
1. 不锈钢镜面抛光(SUS304)Stainless steel mirror polishing;
2. 碳钢镀锌 Carbon steel galvanized;

产品型号
Product model

碳钢

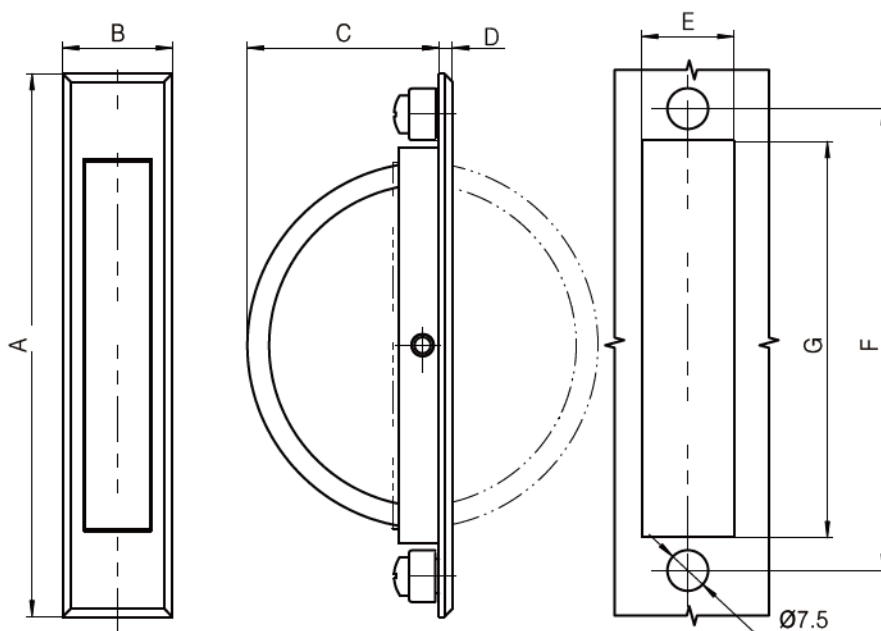
不锈钢

KCZ580

KCZ580S

KC301-1系列

镶入式转环拉手

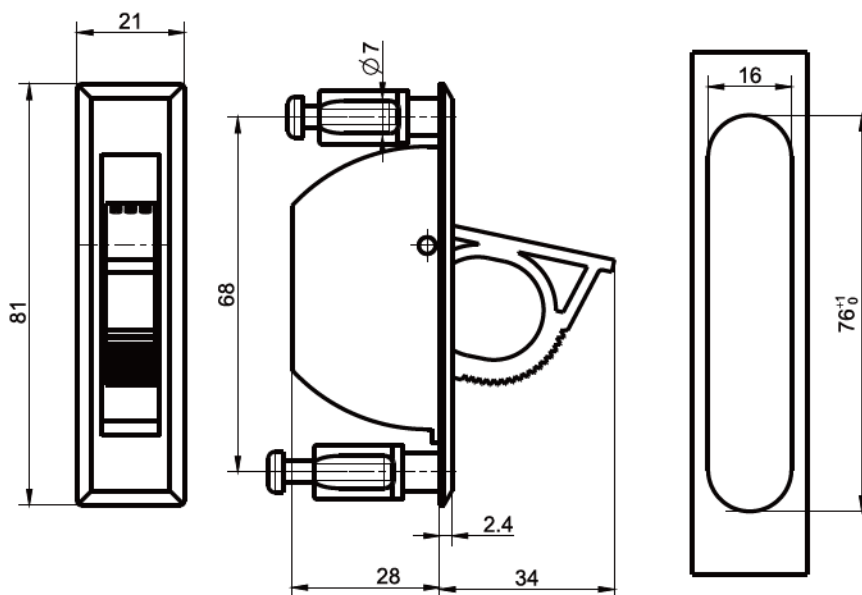
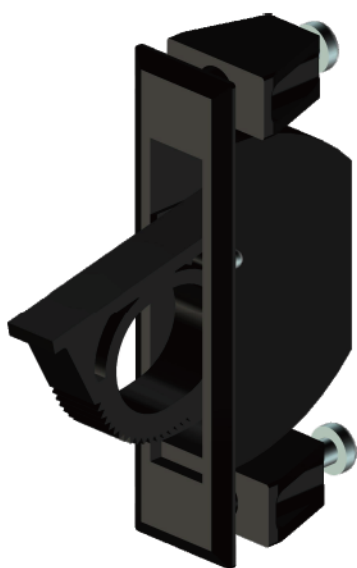


-材质及表面处理Material and treatment:
1. 锌合金砂铬拉手Zinc alloy sand chrome handle:
-最大静载荷Maximum static load:350N

镀铬, 锌合金 chromed, Zinc alloy	A	B	C	D	E	F	G
KC301-1119	100	20	35	2.5	17	85	73.5
KC301-1219	115	30	44	3	22	100	88
KC301-1319	90	18	31	3	15	75	63.5

KC301-2系列

镶入式转环拉手

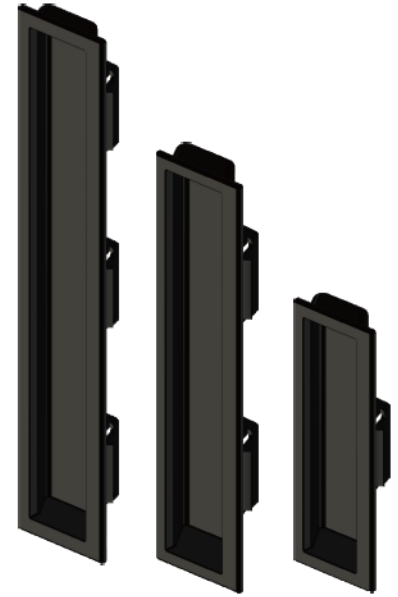
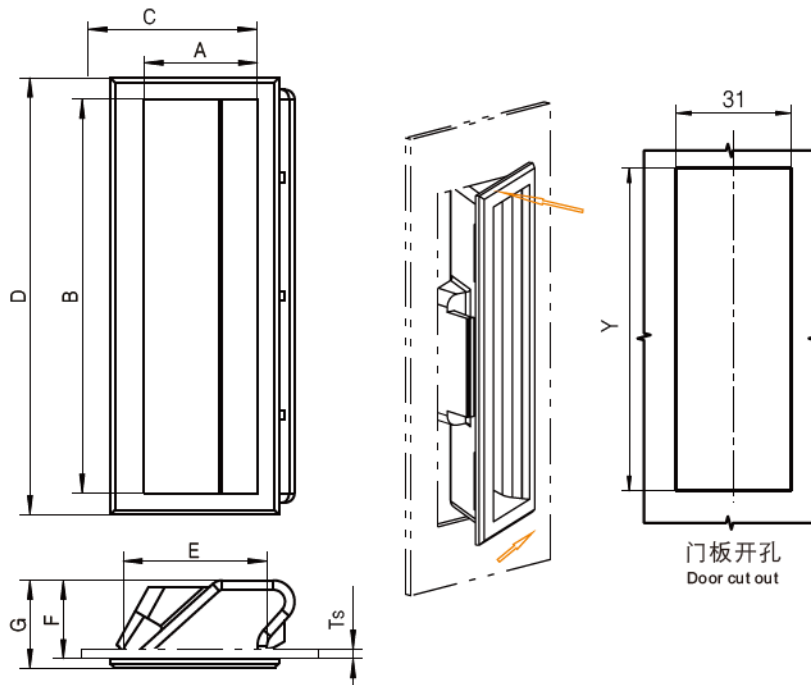


-材质及表面处理Material and treatment:
1. 黑色PA拉手Black PA handle
-最大静载荷Maximum static load:350N

产品型号 Product model
KC301-2170

镶入式卡扣拉手

KC302-1/2/3

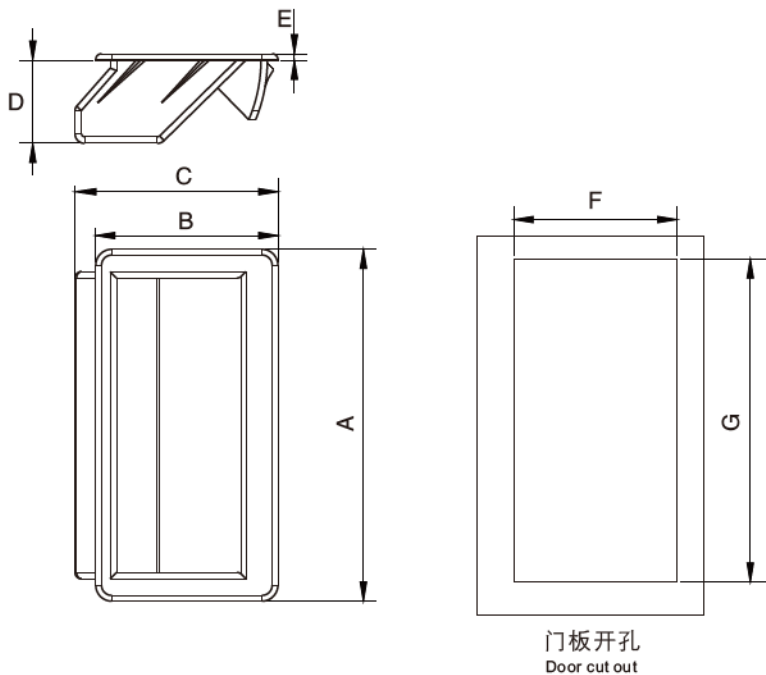


-材质及表面处理Material and treatment:
1.黑色PA拉手Black PA handle

产品型号 Product code	A	B	C	D	E	F	G	Y	Ts
KC302-1170	24	82	35.5	93	30.3	16.5	18.5	87.5	1.5-2.5
KC302-2170	24	127	35.5	136	30.3	16.5	18.5	132	1.5-2.5
KC302-3170	24.5	167	35.5	178	30	14.5	16.5	171.5	1.5-2.5

镶入式卡扣拉手

KC302-4/5



-材质及表面处理Material and treatment:
1.黑色PA拉手Black PA handle

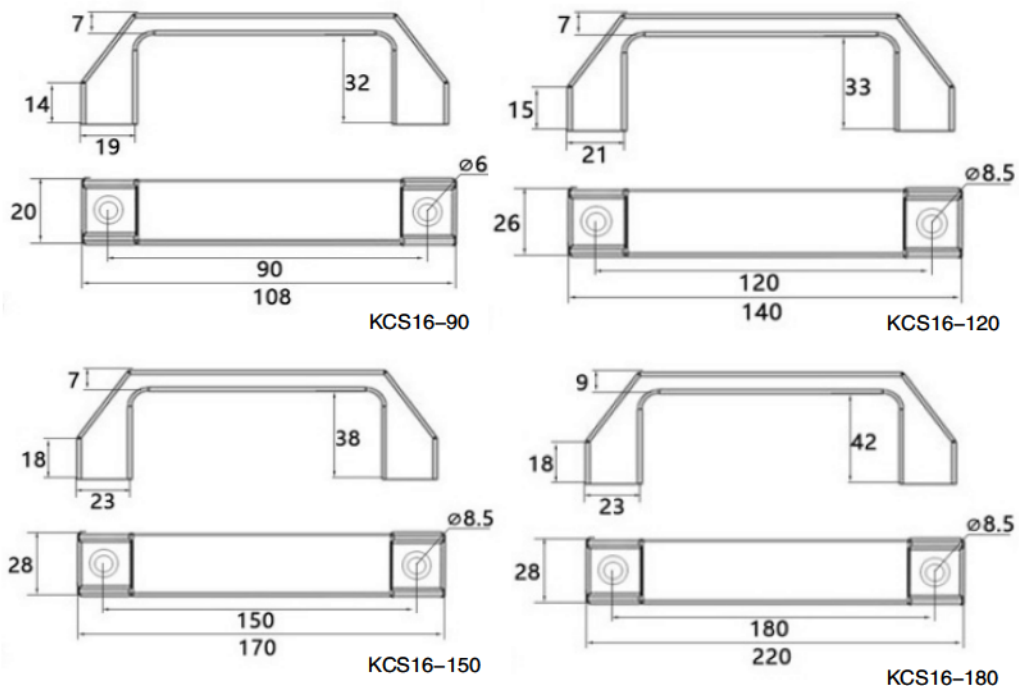
产品型号 Product model	A	B	C	D	E	F	G	Ts
KC302-4170	110	57	63	26	2	50	100	1.5-3.5
KC302-5170	94	41	47	19	2	35.5	85	1.5-3.5

KCS16系列



-材质及表面处理Material and treatment:
1.ABS尼龙, ABS nylon

外露式尼龙拉手



产品型号
Product model

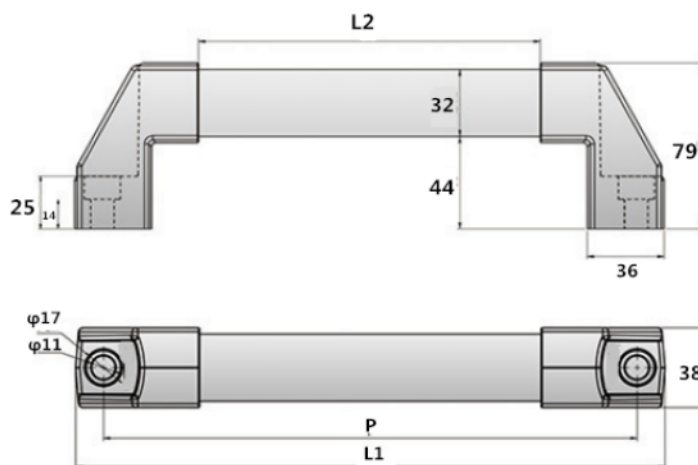
KCS16-90	KCS16-120	KCS16-150	KCS16-180
----------	-----------	-----------	-----------

KCY04系列



-材质及表面处理Material and treatment:
1.不锈钢304.Stainless steel 304
2.锌合金黑色烤漆, 银色喷涂.Zinc alloy black paint, silver coating
3.管壁厚2.0mm Tube wall thickness 2.0mm:

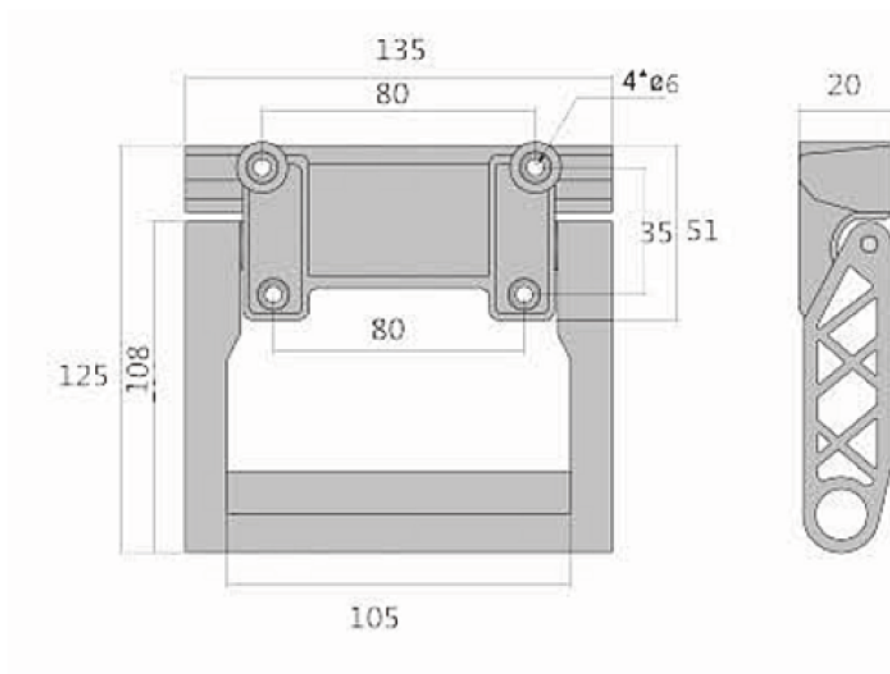
重型圆棒拉手



产品型号 Product model	颜色 colour	P	L1	L2
KCY04B-250	黑色	250	274	160
KCY04W-250	白色	250	274	160
KCY04B-300	黑色	300	324	210
KCY04W-300	白色	300	324	210
KCY04B-500	黑色	500	524	410
KCY04W-500	白色	500	524	410

军工塑料黑色箱包拉手

KCZ358系列

拉
手

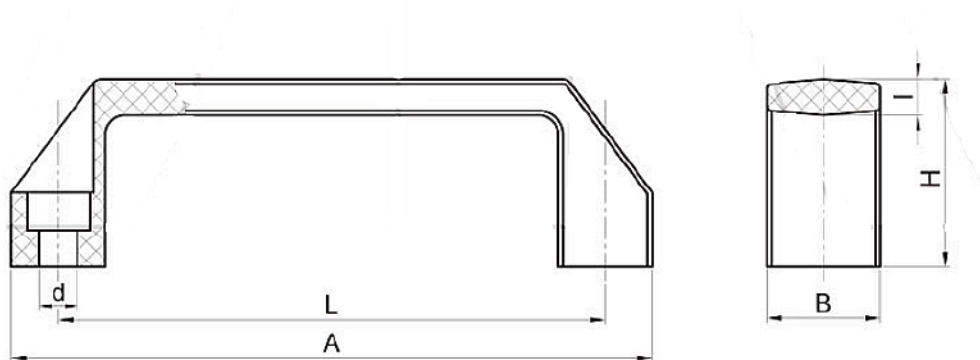
-材质及表面处理Material and treatment:
1.黑色PA拉手Black PA handle

产品型号
Product model

KCZ358

方拉手A

KCZ106系列



整体颜色

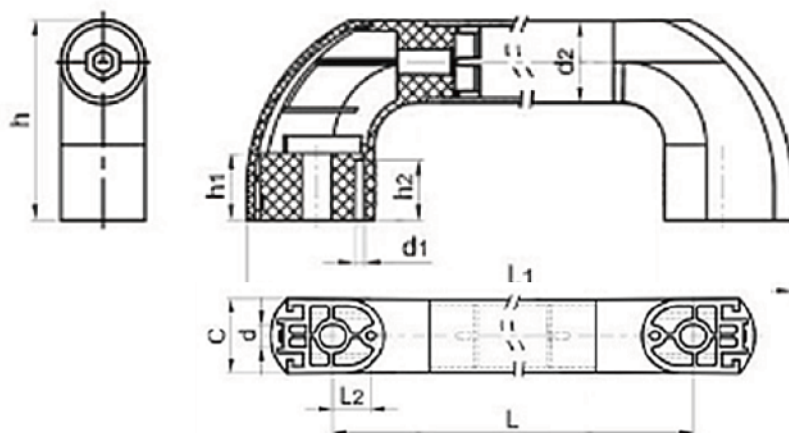


-材质及表面处理Material and treatment:
1.铝型材喷涂拉手Aluminum profile coated handle
2.工程ABS材质拉手Engineering ABS material handle

产品型号 Product mode	颜色 Color	L	A	B	d	H	I
KCZ106-90	红色, 黄色 灰色, 黑色	90	105	20	6.5	37	6
KCZ106-120		120	135	26	8.5	39	7
KCZ106-180		180	200	28	8.5	49	7.5

KCZ104

管状拉手2



侧罩颜色

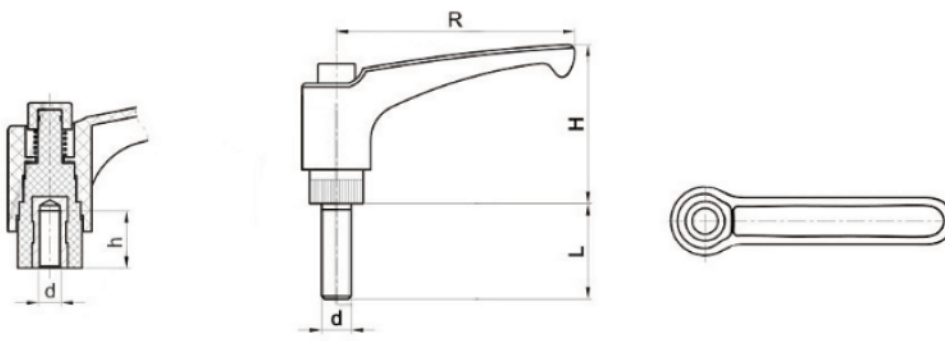


-材质及表面处理Material and treatment:
1.特制涂层铝管或不锈钢镜面抛光管
Specially coated aluminum tube or stainless steel mirror polished tube
2.侧罩采用塑料碳纤维复合材料制作
The side cover plastic carbon fiber composite materials

产品型号 Product mode	L	L1	L2	d	h	h1	h2	d1	d2	c
KCZ104-240	240	299	18.2	11	86	28	25	φ 4.5	φ 35	36
KCZ104-350	350	409	18.2	11	86	28	25	φ 4.5	φ 35	36
KCZ104-400	400	459	18.2	11	86	28	25	φ 4.5	φ 35	36
KCZ104-500	500	559	18.2	11	86	28	25	φ 4.5	φ 35	36
KCZ104-750	750	809	18.2	11	86	28	25	φ 4.5	φ 35	36
KCZ104-1050	1050	1109	18.2	11	86	28	25	φ 4.5	φ 35	36

KCZ101

可调手柄



A型

B型

把手颜色



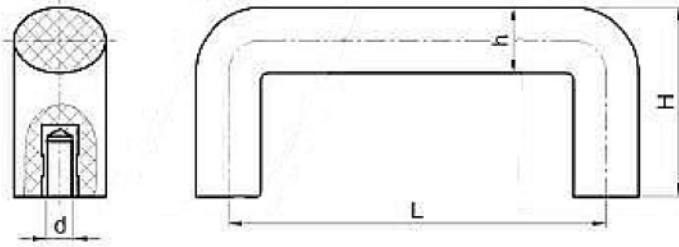
-材质及表面处理Material and treatment:
1.手柄由锌铝合金压铸成型, 柄表面喷塑
Handle by zinc alloy die-casting molding, handle plastic-sprayed surface
2.A型为内嵌金属螺母A type of embedded metal nut
B型为镀锌钢螺栓杆Type B for galvanized steel bolt rod

产品型号 Product mode	d	R	L	h	H
KCZ101-M6	M6	50	16、20、25、30、40	10	33
KCZ101-M8	M8	63	20、25、30、35、40	12	44
KCZ101-M10	M10	80	20、25、30、35、40	17	55
KCZ101-M12	M12	95	25、30、35、40、50	20	65
KCZ101-M16	M16	114	25、30、50、70、60	20	66

机械拉手

KCZ105系列

拉手

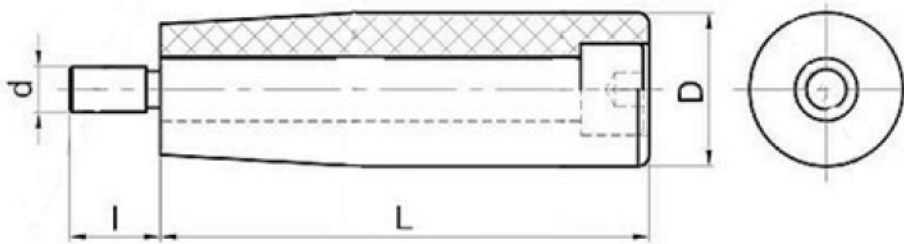


—材质及表面处理Material and treatment:
1.酚醛树脂, 钢制螺母Phenolic resin, steel nut

产品型号 Product mode	颜色 Color	L	d	H	h
KCZ105-90	红色 黑色	90	M6	45	15
KCZ105-120		120	M8	55	18
KCZ105-180		180	M8	60	19
KCZ105-240		240	M8	60	20
KCZ105-320		320	M8	60	21
KCZ105-400		400	M8	76	25

转动手柄

KCZ110系列



—材质及表面处理Material and treatment:
1.酚醛基(PF)热固性塑料
Phenolic based (PF) thermosetting plastics
2.镀锌钢螺杆Galvanized steel screw

产品型号 Product mode	颜色 Color	d	L	I	D
KCZ110-M5	红色 黑色	M5	25	12	13
KCZ110-M6		M6	32、55	14、16	15、22
KCZ110-M8		M8	65	16	23
KCZ110-M10		M10	85	18	28
KCZ110-M12		M12	100	20	29

KCS-34/35系列

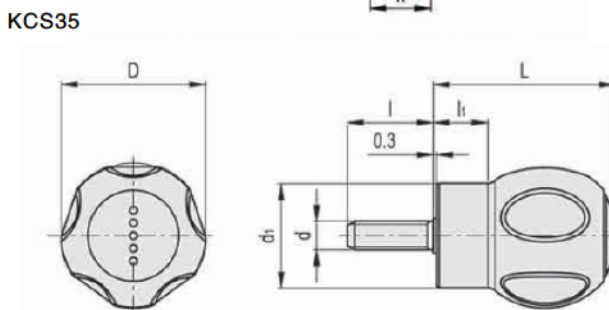
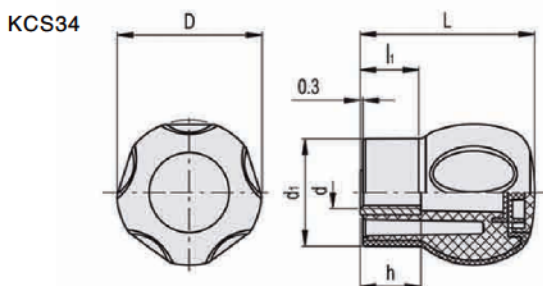
球形把手



KCS34

KCS35

-材质及表面处理Material and treatment:
1.聚丙烯基(PP)高科技聚合体
Polypropylene (PP) high-tech polymer



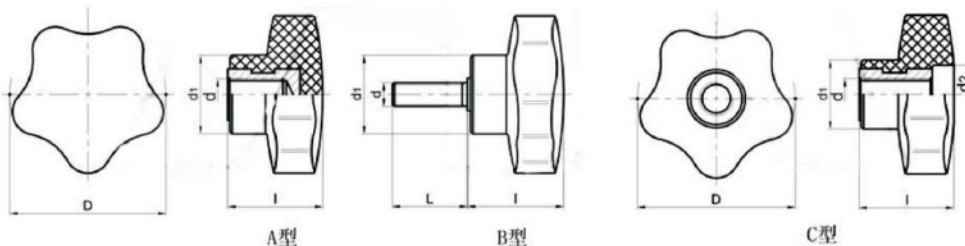
产品型号 Product mode	d	D	d1	l1	h	L
KCS34-D43*M8	M8、M10	43	33	18	10	54
KCS34-D50*M10	M8、M10、M12	50	37	22	21	60
KCS35-D43*M8	M8、M10	43	33	18	22	54
KCS35-D50*M10	M8、M10、M12	50	37	22	27	60

KCZ-WH

五行把手



-材质及表面处理Material and treatment:
1.把手主体材质为酚醛树脂。
The handle body is made of phenolic resin
A型为内嵌金属螺母Type A is embedded metal nut
B型为镀锌钢螺栓杆Type B is galvanized steel bolt rod

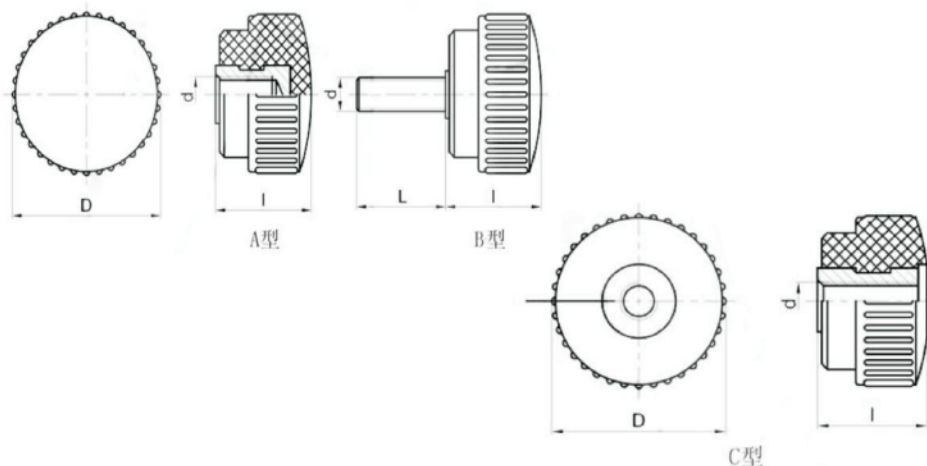


产品型号 Product mode	颜色 Color	d	L	D	l	d1
KCZ-WH-M5	红色.黑色	M5	10,15,20,25,40	25	17	15
KCZ-WH-M6		M6	10,20,25,30,40	32	22	19
KCZ-WH-M8		M8	20,25,30,35,40	40	23	21
KCZ-WH-M10		M10	25,30,35,40,50	50	26	25
KCZ-WH-M12		M12	20,25,30,40,50	65	35	30

直纹把手

KCZ-ZW系列

拉手



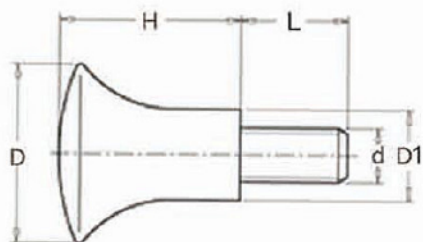
产品型号 Product mode	颜色 Color	d	L	D	I
KCZ-ZW-M4	红色 黑色	M4	10、15、20、25	15	11
KCZ-ZW-M5		M5	10、15、20、25	18	12
KCZ-ZW-M6		M6	10、15、20、25	22	14
KCZ-ZW-M6/M8		M6 M8	20、25、30、35	26	18
KCZ-ZW-M8		M8	20、25、30、35	30	19
KCZ-ZW-M8-1		M8	25、30、35、40	40	26
KCZ-ZW-M10/M12		M10 M12	30、35、40、50	50	32



-材质及表面处理Material and treatment:
1.把手主体材质为酚醛树脂。
The handle body is made of phenolic resin
A型.C型为内嵌金属螺母Type A .C is embedded metal nut
B型为镀锌钢螺栓杆Type B is galvanized steel bolt rod

把手

KCS-08系列



产品型号 Product mode	H	d	L	D	D1
KCS08-D20*M5*L	20	M5	5、10、15	20	12
KCS08-D20*M6*L	20	M6	10、15、20、25、30	20	12
KCS08-D25*M6*L	25	M6	10、15、20、25、30	25	16
KCS08-D30*M6*L	28	M6	10、15、20、25、30	30	18
KCS08-D25*M8*L	25	M8	10、15、20、25、30、35、40	25	16
KCS08-D32*M10*L	25	M10	15、20、25、30、35、40	32	17



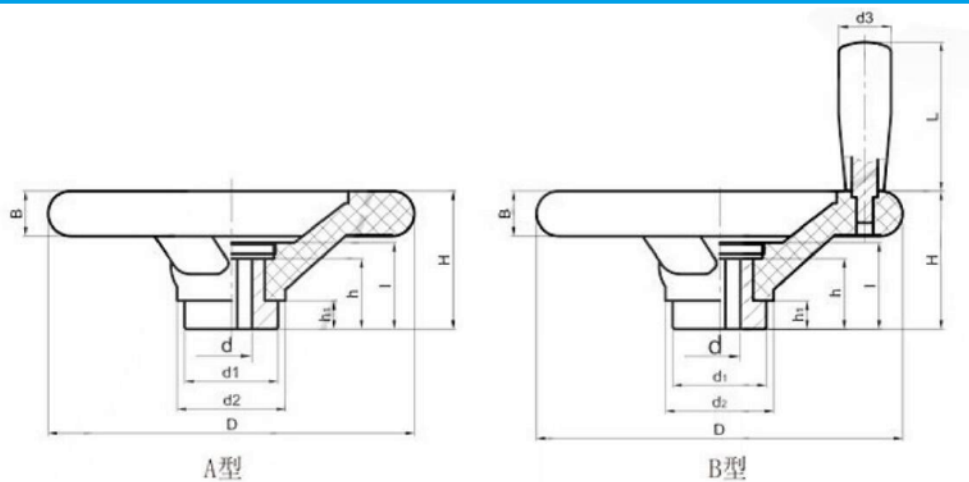
-材质及表面处理Material and treatment:
1.酚醛基(PF)热固性塑料
Phenolic based (PF) thermosetting plastics
2.镀锌钢螺栓杆Galvanized steel screw

KCZ-SL



-材质及表面处理Material and treatment:
1.超韧增强尼龙钢质铁芯表面处理防锈能力强
The surface treatment of super tough reinforced nylon steel iron core has strong anti rust ability

塑钢手轮



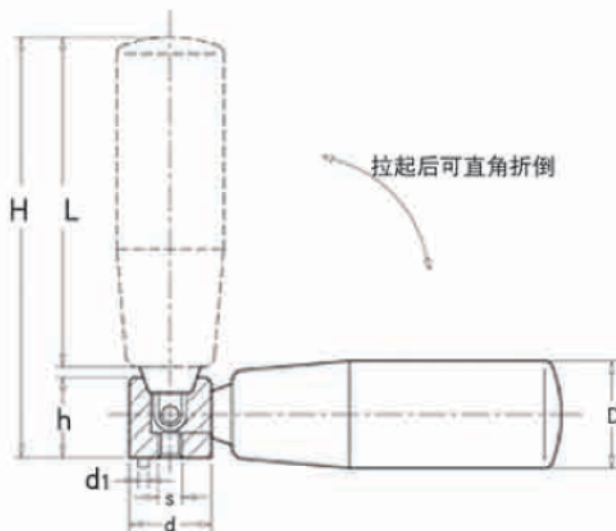
产品型号 Product mode	D	d	d1	d2	d3	l	H	h	L	B
KCZ-SL-80	80	10	24	29	16	27	40	22	45	14
KCZ-SL-100	100	12	28	33	19	31	44	25	55	15
KCZ-SL-125	125	12	28	37	19	31	49	25	55	16
KCZ-SL-140	140	12	35	42	19	35	54	30	55	16
KCZ-SL-160	160	12	35	43	23	36	58	30	70	17
KCZ-SL-200	200	18	40	47	27	42	65	35	85	21
KCZ-SL-250	250	22	40	50	27	42	68	35	85	25

KCS-24

可折转动手柄



-材质及表面处理Material and treatment:
1.酚醛基(PF)热固性塑料
Phenolic based (PF) thermosetting plastics

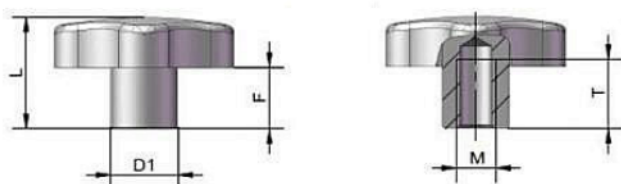


产品型号 Product mode	L	d	D	s	d1	H	h
KCS24-L50*S5	50	15	22	5	3	65	15
KCS24-L63*S6	63	19	25	6	3	82	20
KCS24-L81*S6	81	19	26	6	3	100	20

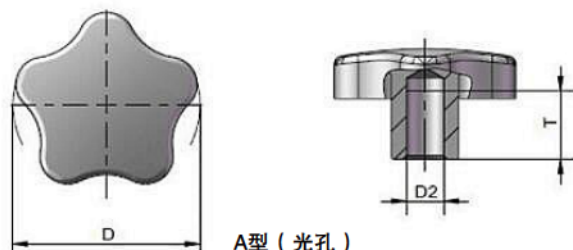
不锈钢星形把手

KCS-54系列

拉手



B型 (螺纹孔)



A型 (光孔)

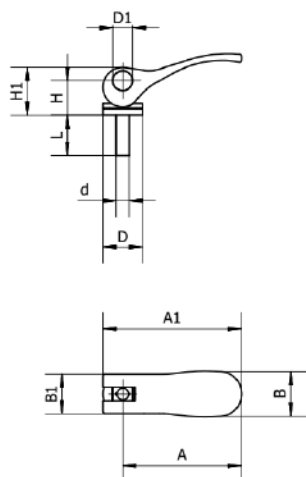
产品型号 Product mode	D	L	D1	M	T	D2	F
KCS54-40-M8-B	40	24	14	M8	15		12
KCS54-40-8-A	40	24	14		15	8	12
KCS54-50-M10-B	50	30	18	M10	18		16.5
KCS54-50-10-A	50	30	18		18	10	16.5
KCS54-60-M12-B	60	37.5	20	M12	22		20
KCS54-60-12-A	60	37.5	20		22	12	20

-材质及表面处理Material and treatment:
1.不锈钢镜面抛光SUS304Stainless steel mirror polishing



凸轮把手

KCZ-WY01



产品型号 Product mode	主尺寸 Main size(mm)										颜色 Color
	d	D1	D	A	A1	B	B1	H	H1	L	
KCZ-WY01.01	M4	5	12	37	42	14	12	10	13	10-50	黑色 银色
KCZ-WY01.02	M5	8	16	52	58	18	13	13	18	10-50	
KCZ-WY01.03	M6	10	16	70	78	21	15	15	22	10-60	
KCZ-WY01.04	M8	10	22	80	92	25	17	22	32	10-60	
KCZ-WY01.05	M10	12	22	98	110	30	20	22	32	10-60	

-材质及表面处理Material and treatment:
1.不锈钢亮光、拉丝Stainless Steel Polished Brushed

